



David  
Astburys



- Secluded Gated Development
- Modern Mews House
- Terrace
- Open Plan Kitchen Diner
- Wood Floors
- Modern Bathroom

## Omega Terrace, High Road, Wood Green N22

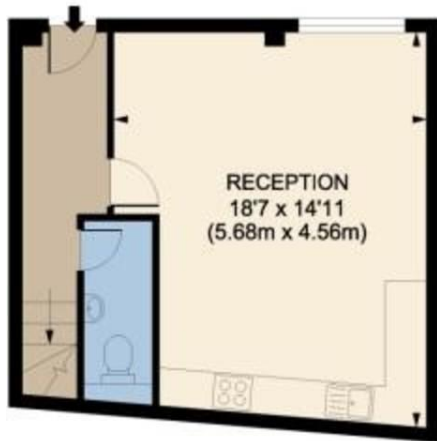
Asking Price Of £529,995

A fantastic three-bedroom modern mews house situated in this Secluded Gated Development within walking distance to Wood Green Station

The house is set across three levels, the ground floor features a spacious open plan reception area with a modern integrated kitchen and downstairs WC. The first floor is the master bedroom with fitted wardrobes and private terrace, the second double bedroom with dual aspect windows has lots of natural light. The third floor features a large third bedroom with fitted storage and a luxury bathroom with large walk in rain shower as well as a luxury bathtub.



THIRD FLOOR



GROUND FLOOR



FIRST FLOOR

Omega Mews, London, N22  
Gross internal area 893 sq ft/83 sq metres

Whilst every attempt has been made to ensure the accuracy of the floorplan shown, all measurements, positioning fixtures, fittings and any other data shown are an approximate interpretation for illustrative purposes only and are not to scale. No responsibility is taken for any error, omission, mis-statement or use of data shown.



15 Park Road, Crouch End,  
London, N8 8TE

<http://www.davidastburys.com>  
0203 000 6787  
[crouchend@davidastburys.com](mailto:crouchend@davidastburys.com)

Agents Note: Whilst every care has been taken to prepare these sales particulars, they are for guidance purposes only. All measurements are approximate and are for general guidance purposes only and whilst every care has been taken to ensure their accuracy, they should not be relied upon and potential buyers are advised to recheck the measurements.