



**71 Friary Grange**

**Rent: £1,050 pcm**

# Property Summary



## ENTRANCE HALL

## LOUNGE/DINING ROOM

22' 6" x 12' 0" (6.86m x 3.66m) Dual aspect

## KITCHEN

14' 0" x 7' 0" (4.27m x 2.13m) Garden aspect.

## UTILITY ROOM

7' 9" x 6' 6" (2.36m x 1.98m)

## LANDING

## MASTER BEDROOM

14' 0" x 8' 0" (4.27m x 2.44m) PLUS WARDROBE CUPBOARDS. Garden aspect.

## BEDROOM TWO

11' 1" x 9' 0" (3.38m x 2.74m) Garden aspect.

## BEDROOM THREE

10' 6" x 8' 2" (3.2m x 2.49m) Front aspect.

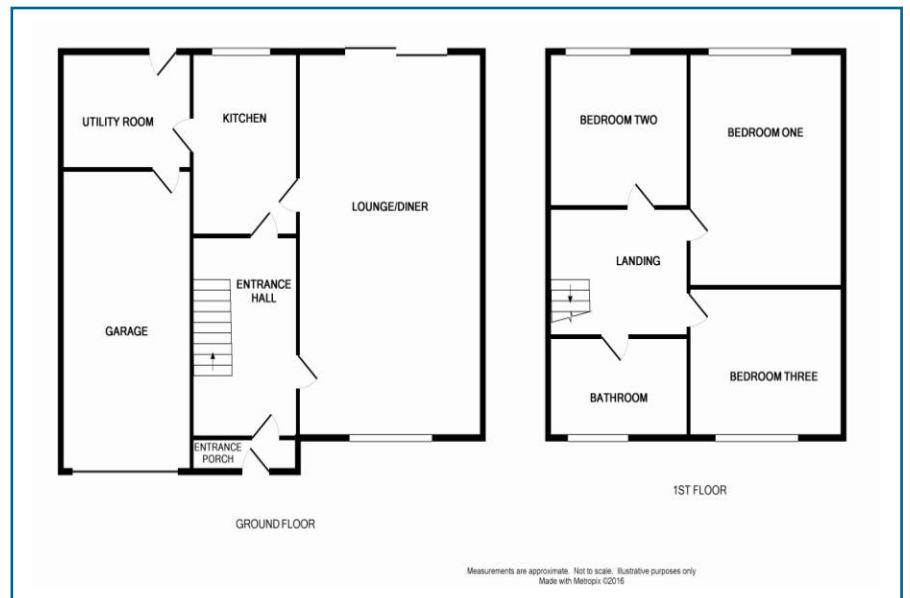
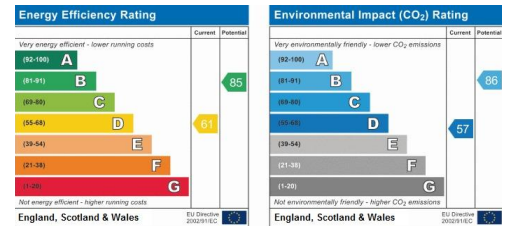
## BATHROOM

## REAR GARDEN

## GARAGE

20' 0" x 7' 9" (6.1m x 2.36m)

- Semi Detached Home
- Three Bedrooms
- Unfurnished
- Garage & Off Street Parking
- Utility Room
- Available July 2019



4 Flaxpits Lane  
Winterbourne  
Bristol  
Avon  
BS36 1JX

www.aj-homes.co.uk  
info@aj-homes.co.uk  
01454 252140

Agents Note: Whilst every care has been taken to prepare these sales particulars, they are for guidance purposes only. All measurements are approximate are for general guidance purposes only and whilst every care has been taken to ensure their accuracy, they should not be relied upon and potential buyers are advised to recheck the measurements