



72 - 76 Duke Street, Liverpool

£800 PCM

This awesome apartment is smack bang in the middle of Liverpool city centre. Young professionals and city workers would benefit superbly from the location of this two-bed, and enjoy its modern character too.

Housed inside the Spectrum Building on the popular Duke Street, the lucky tenants of this apartment are spoilt for choice when it comes to top restaurants, bars and coffee shops. Right in the heart of the action, you can be anywhere in the city centre in moments. This location makes the ideal stroll to work, or for those public transport commuters, Liverpool Central train station is very close as well.

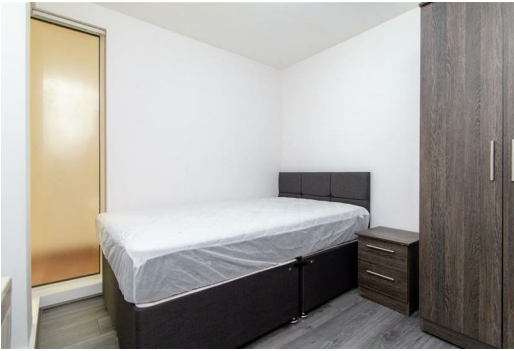
The home itself features a sleek kitchen diner area overlooking the open plan lounge. You've got modern worktops and integrated appliances all featured as part of a sleek, clean design. The dining area comfortably seats 4 people too. Fully furnished to a stylish taste, the living room has two leather sofas and a coffee table, which sit spacious on the practical wooden flooring. The entire room boasts a bright feel thanks to the large Juliet balcony doors allowing plenty of light to flood in. The adjustable blinds allow ideal privacy too for those all-important movie marathons and cosy nights in!

Both with comfy leather headboards, the double bedrooms are perfect and offer plenty of space and come with the right amount of storage space. A generous sized bathroom between the two, it comes with both a bath and shower, and is tiled and decorated with light colours offering the right amount of lighting.

Available 27 July 2019.



Apartment 21 Spectrum Building 72 - 76 Duke Street, Liverpool, Merseyside, L1 5AT



Energy Efficiency Rating			Environmental Impact (CO ₂) Rating		
Very energy efficient - lower running costs	Good	Poor	Very environmentally friendly - lower CO ₂ emissions	Good	Poor
92-100 A			10-49 A		
82-91 B			50-49 B		
72-81 C			39-48 C		
62-71 D			28-38 D		
52-61 E			17-27 E		
42-51 F			6-16 F		
32-41 G			1-5 G		
Not energy efficient - higher running costs			Not environmentally friendly - higher CO ₂ emissions		