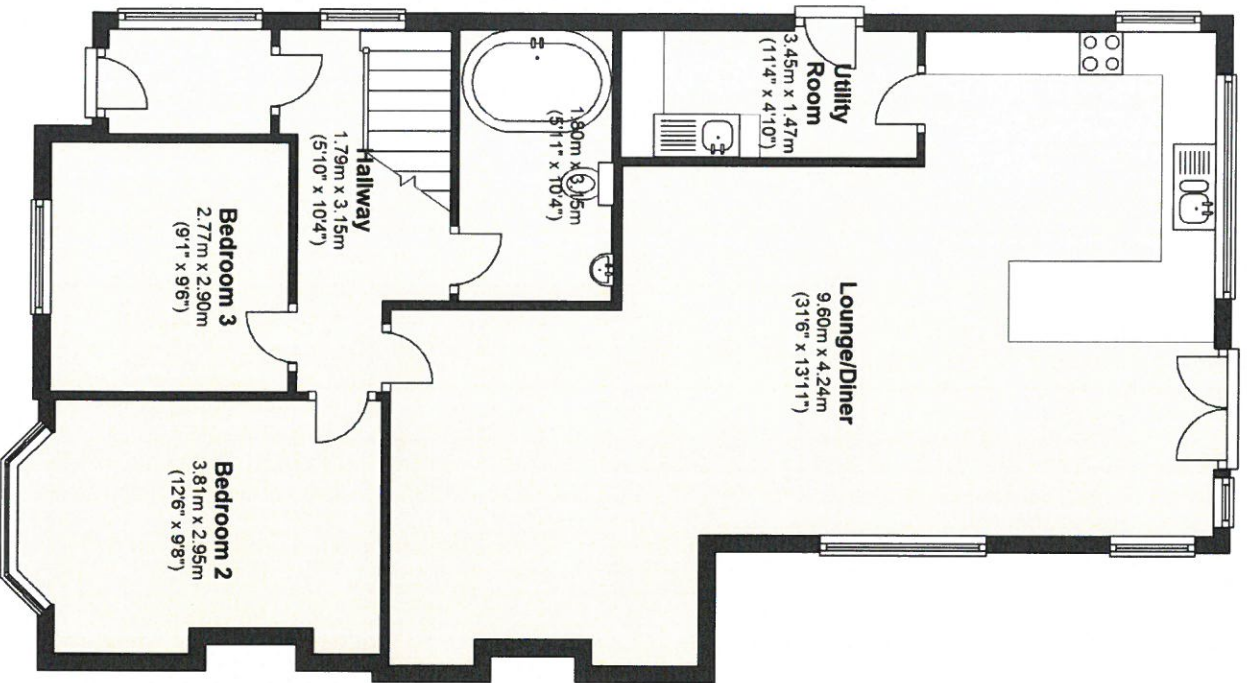


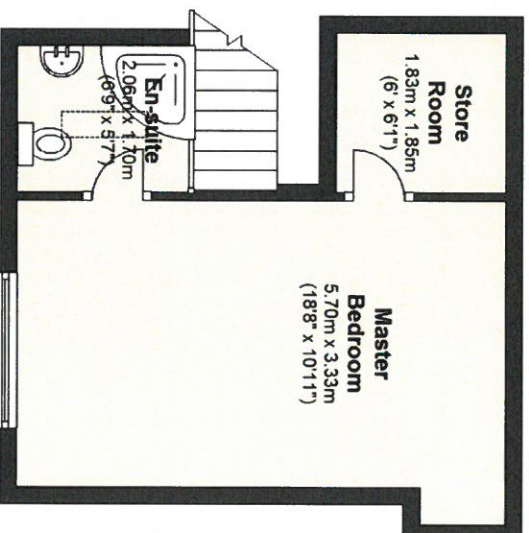
## Ground Floor

Approx. 89.1 sq. metres (959.1 sq. feet)



## First Floor

Approx. 23.3 sq. metres (251.3 sq. feet)



Total area: approx. 112.4 sq. metres (1210.4 sq. feet)

The above particulars are for guidance only, no liability for any errors or omissions will be accepted by Aberdeen Property Leasing Ltd.  
Plan produced using PlanUp.