





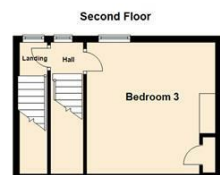
- Substantial Period Terrace
- Desirable Location
- Four Bedrooms
- No Onward Chain
- Two Kitchens
- Two Shower Rooms
- Masses Of Potential
- Must Be Viewed
- Gas Central Heating
- Double Glazing





Spanning over four floors is this substantial four bedroom period terrace located within a few minutes walking distance to all the amenities and transport links Newcastle City Centre has to offer. The property is currently sold as a single dwelling however could be easily split into two self contained flats with it having two kitchens and shower rooms as well as further space available to purchase also. Internally the property has retained some original features and briefly comprises to the ground floor:- entrance vestibule leading into hallway, bedroom, kitchen and shower room WC. The first floor offers a reception room spanning the full width of the property with feature fireplace, bedroom, second kitchen and shower room WC. The third and fourth floors offer a further two bedrooms. This property really does have to be viewed to appreciate the standard of accommodation on offer. For more information and to book your viewing please call our sales team on 0191 270 1122.





Lounge 20'10" x 14'7" (6.36 x 4.45)

Kitchen 7'1" x 7'10" (2.18 x 2.41)

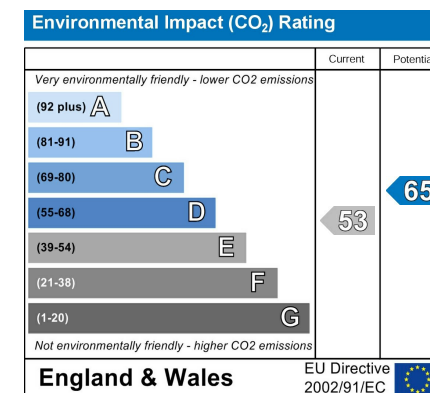
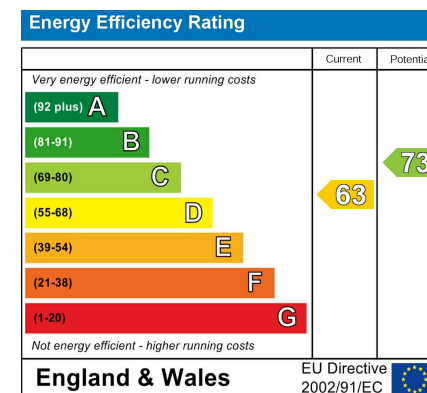
Kitchen 2 7'8" x 7'9" (2.35 x 2.37)

Bedroom One 13'10" x 13'8" (4.22 x 4.17)

Bedroom Two 13'8" x 13'11" (4.19 x 4.25)

Bedroom Three 14'1" x 13'10" (4.31 x 4.22)

Bedroom Four 19'5" x 9'7" (5.94 x 3.04)



The difference between house and home

You may download, store and use the material for your own personal use and research. You may not republish, retransmit, redistribute or otherwise make the material available to any party or make the same available on any website, online service or bulletin board of your own or of any other party or make the same available in hard copy or in any other media without the website owner's express prior written consent. The website owner's copyright must remain on all reproductions of material taken from this website.

Gosforth 0191 236 2070
 Newcastle 0191 284 4050
 Forest Hall 0191 605 3134
 High Heaton 0191 270 1122
 Low Fell 0191 487 0800
 Tynemouth 0191 257 2000
 Whitley Bay 0191 251 3000
 Property Management Centre 0191 236 2680



www.janforsterestates.com

