

SCHOONER WHARF

FLOOR PLANS AND APARTMENT STYLES



SCHOONERWHARF.CO.UK
02920 468 450

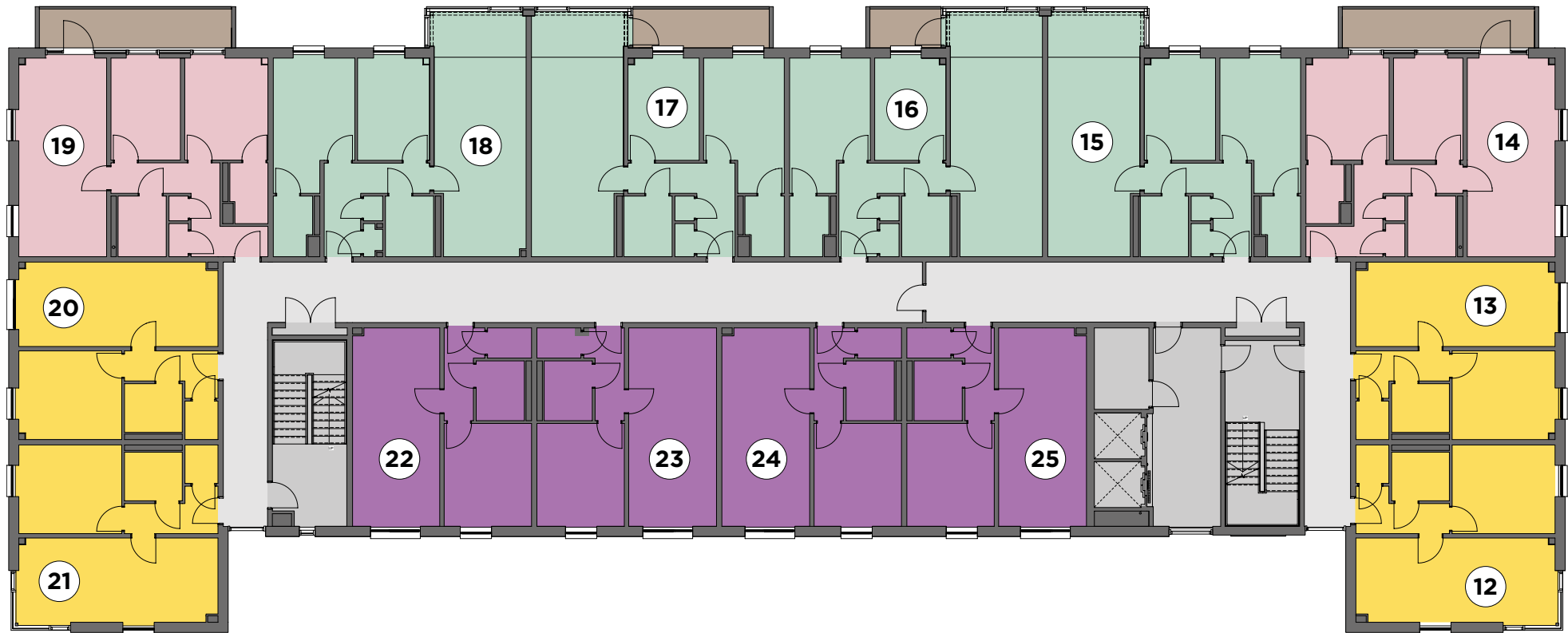
KEY

A 2 bedroom
B 2 bedroom

C 2 bedroom
D 1 bedroom

E 1 bedroom
F 1 bedroom
G 2 bedroom

H 2 bedroom
J 2 bedroom
K 2 bedroom



KEY

A 2 bedroom
B 2 bedroom

C 2 bedroom
D 1 bedroom

E 1 bedroom
F 1 bedroom
G 2 bedroom

H 2 bedroom
J 2 bedroom
K 2 bedroom



SCHOONER WHARF

SCHOONERWHARF.CO.UK
02920 468 450



KEY

A 2 bedroom
B 2 bedroom

C 2 bedroom
D 1 bedroom

E 1 bedroom
F 1 bedroom
G 2 bedroom

H 2 bedroom
J 2 bedroom
K 2 bedroom



SCHOONER WHARF

SCHOONERWHARF.CO.UK
02920 468 450



KEY

A 2 bedroom
B 2 bedroom

C 2 bedroom
D 1 bedroom

E 1 bedroom
F 1 bedroom
G 2 bedroom

H 2 bedroom
J 2 bedroom
K 2 bedroom



SCHOONER WHARF

SCHOONERWHARF.CO.UK
02920 468 450



KEY

A 2 bedroom
B 2 bedroom

C 2 bedroom
D 1 bedroom

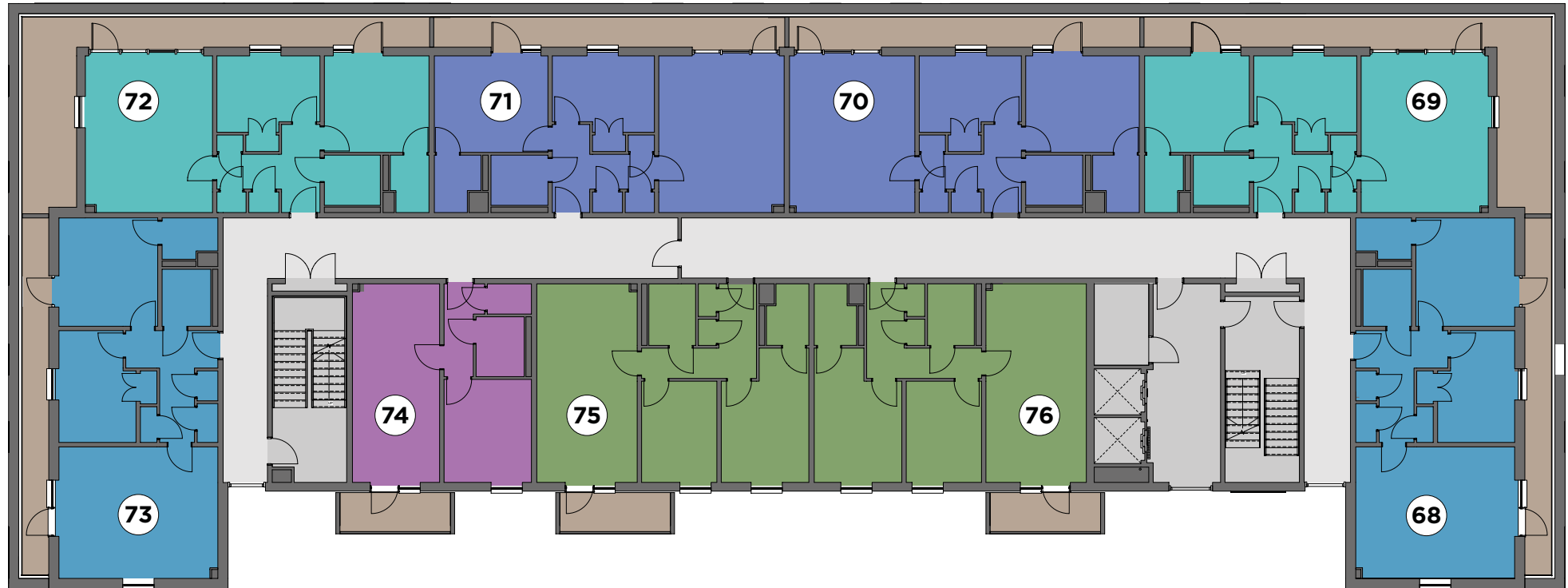
E 1 bedroom
F 1 bedroom
G 2 bedroom

H 2 bedroom
J 2 bedroom
K 2 bedroom



SCHOONER WHARF

SCHOONERWHARF.CO.UK
02920 468 450



KEY

A 2 bedroom
B 2 bedroom

C 2 bedroom
D 1 bedroom

E 1 bedroom
F 1 bedroom
G 2 bedroom

H 2 bedroom
J 2 bedroom
K 2 bedroom



SCHOONER WHARF

SCHOONERWHARF.CO.UK
02920 468 450



KEY

A 2 bedroom
B 2 bedroom

C 2 bedroom
D 1 bedroom

E 1 bedroom
F 1 bedroom
G 2 bedroom

H 2 bedroom
J 2 bedroom
K 2 bedroom



SCHOONER WHARF

SCHOONERWHARF.CO.UK
02920 468 450

APARTMENT A

As shown: 06

Handed: 01

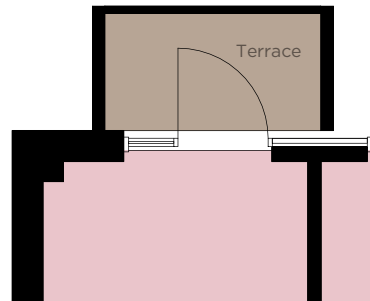
Reduced terrace variant: 33, 47

Handed reduced terrace variant: 28, 42

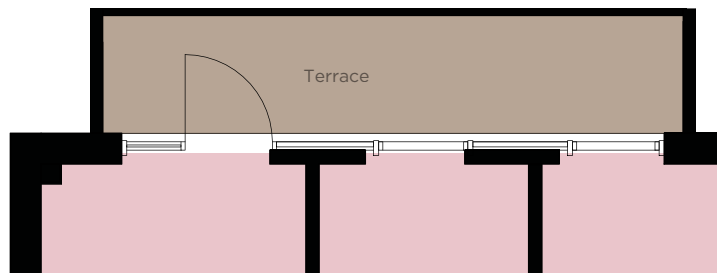
Expanded terrace variant: 19, 61

Handed Expanded terrace variant: 14, 56

Internal Area: 65.4 m² / 704 ft²

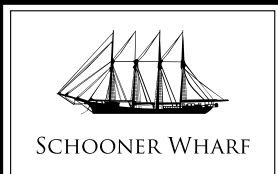
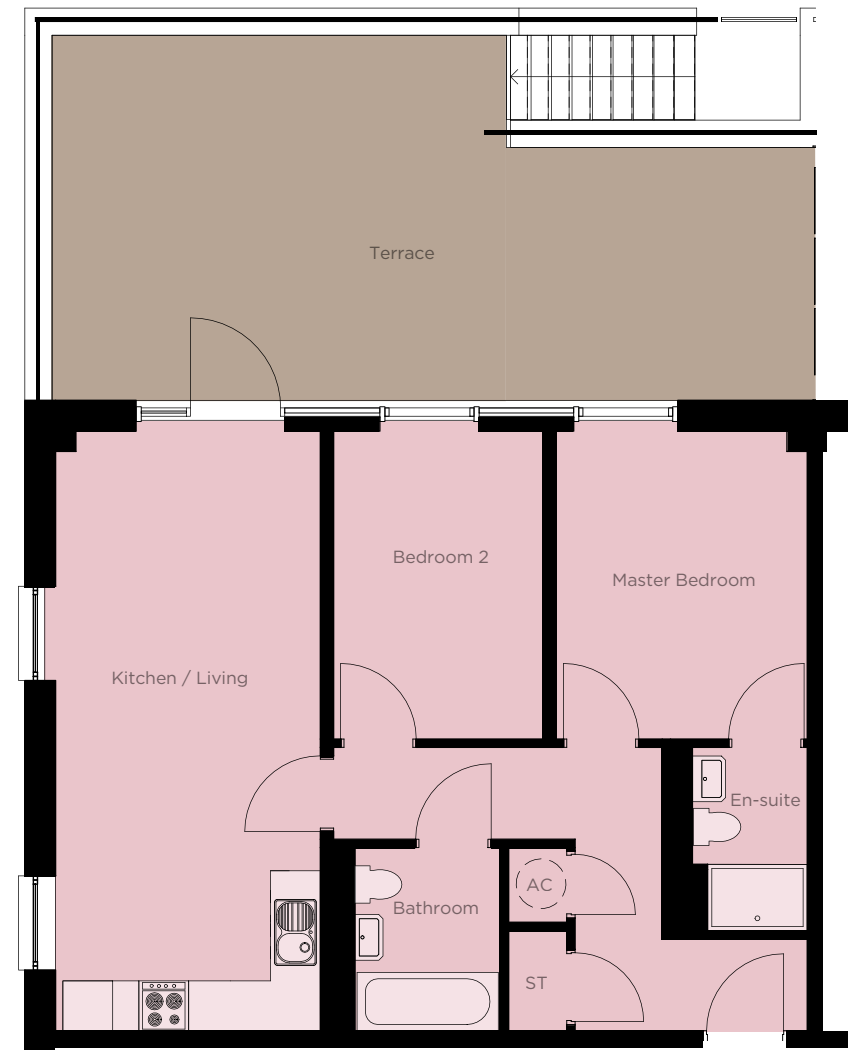


NOTE: Reduced terrace to apartments 28, 33, 42, 47



NOTE: Expanded terrace to apartments 14, 19, 56, 61

Kitchen / Living	7.22m	x	3.19m	11' 6"	x	10' 6"
Master Bedroom	3.71m	x	3.02m	12' 2"	x	9' 11"
Bedroom 2	3.71m	x	2.52m	12' 2"	x	8' 3"



SCHOONERWHARF.CO.UK
02920 468 450

This information has been provided in good faith, however all layouts and measurements are approximate only. The bathroom and kitchen layouts of some apartment types are indicative only and designs may change due to our process of continuous product development. For more information or detailed plans, please speak to a sales advisor. 09.17

APARTMENT B

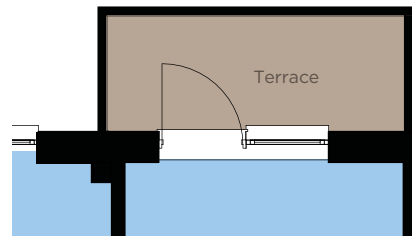
As shown: 03, 05

Handed apartments: 02, 04

Reduced terrace variant: 58, 60

Handed reduced terrace variant: 57, 59

Internal Area: 65.4 m² / 704 ft²



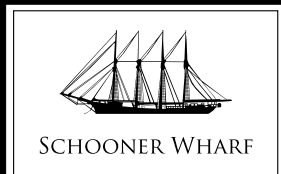
NOTE: Reduced terrace to apartments 57, 58, 59, 60

Kitchen / Living	7.22m	x	3.35m*	23' 8"	x	11' 0"*
Master Bedroom	4.92m*	x	2.93m*	16' 2"*	x	9' 7"*
Bedroom 2	3.72m	x	2.59m	12' 3"	x	8' 6"

* maximum dimension



* NOTE: kitchen in apartment 60 is handed



SCHOONERWHARF.CO.UK
02920 468 450

This information has been provided in good faith, however all layouts and measurements are approximate only. The bathroom and kitchen layouts of some apartment types are indicative only and designs may change due to our process of continuous product development. For more information or detailed plans, please speak to a sales advisor. 09.17

APARTMENT C

As shown: 16, 30

Handed: 29, 43

Without terrace: 18, 44

Handed without terrace: 15, 45

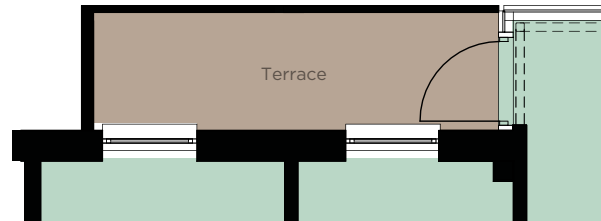
Expanded terrace variant: 32, 46

Handed terrace variant: 17, 31

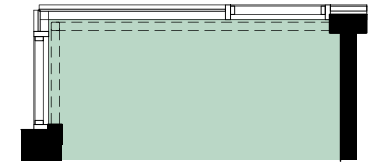
Internal Area: 66.4 m² / 715 ft²

Kitchen / Living	7.22m	x	3.35m*	23' 8"	x	11' 0"	*
Master Bedroom	4.92m*	x	2.93m*	16' 2"	x	9' 7"	*
Bedroom 2	3.72m	x	2.59m	12' 3"	x	8' 6"	

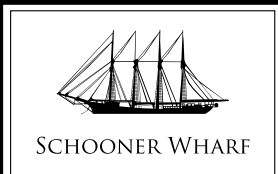
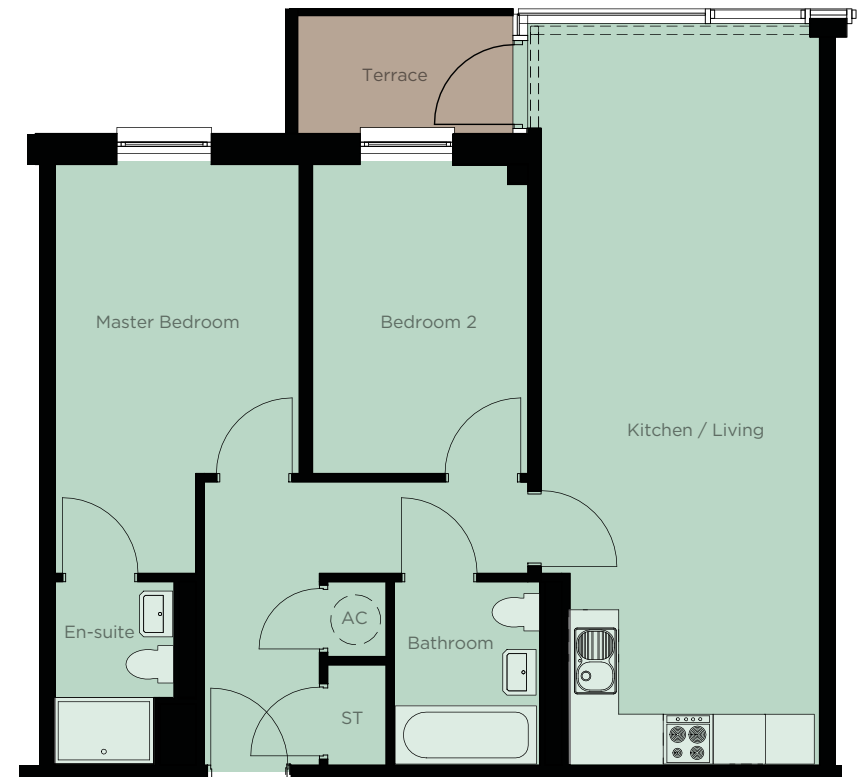
* maximum dimension



NOTE: Expanded terrace to apartments 17, 31, 32, 46



NOTE: No terrace to apartments 15, 18, 44, 45



SCHOONERWHARF.CO.UK
02920 468 450

This information has been provided in good faith, however all layouts and measurements are approximate only. The bathroom and kitchen layouts of some apartment types are indicative only and designs may change due to our process of continuous product development. For more information or detailed plans, please speak to a sales advisor. 09.17

APARTMENT D

As shown: 07, 20, 34, 48, 62

Handed: 13, 27, 41, 55

Corner and side window variant: 12, 26, 40, 54

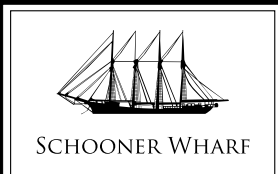
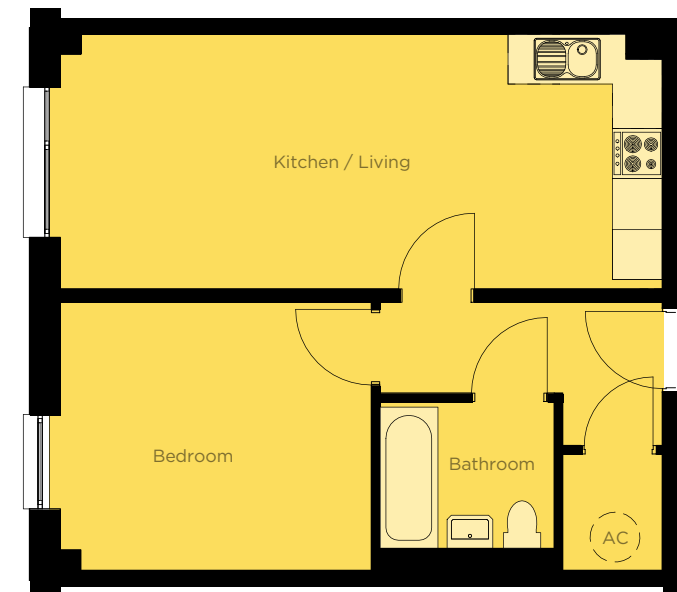
Handed Corner and side window variant: 08, 21, 35, 49, 63

Internal Area: 46.7 m² / 503 ft²

Kitchen / Living	7.24m	x	3.07m	23' 9"	x	10' 1"
Bedroom	3.74m	x	3.22m	12' 3"	x	10' 7"



NOTE: Glazed corner and side window to apartments 08, 12, 21, 26, 35, 40, 49, 54, 63



SCHOONERWHARF.CO.UK
02920 468 450

This information has been provided in good faith, however all layouts and measurements are approximate only. The bathroom and kitchen layouts of some apartment types are indicative only and designs may change due to our process of continuous product development. For more information or detailed plans, please speak to a sales advisor. 09.17

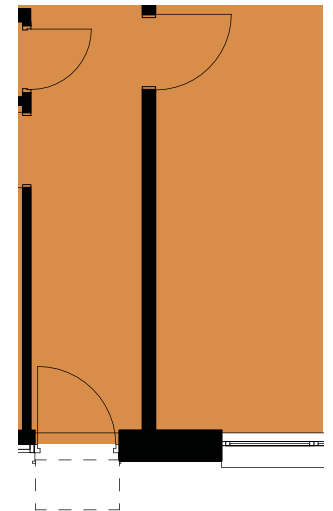
APARTMENT E

As shown: 09
Handed: 10
Variant: 11

Internal Area: 53.4 m² / 575 ft²

Kitchen / Living	7.22m	x	3.28m*	23' 8"	x	10' 9"*
Bedroom	4.01m*	x	2.69m*	13' 2"*	x	8' 10"*

* maximum dimension



NOTE: Variant corridor and kitchen / living wall layout to apartment 11



SCHOONERWHARF.CO.UK
02920 468 450

This information has been provided in good faith, however all layouts and measurements are approximate only. The bathroom and kitchen layouts of some apartment types are indicative only and designs may change due to our process of continuous product development. For more information or detailed plans, please speak to a sales advisor. 09.17

APARTMENT F

As shown: 22, 24, 64, 66

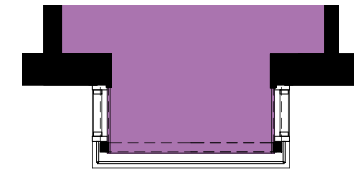
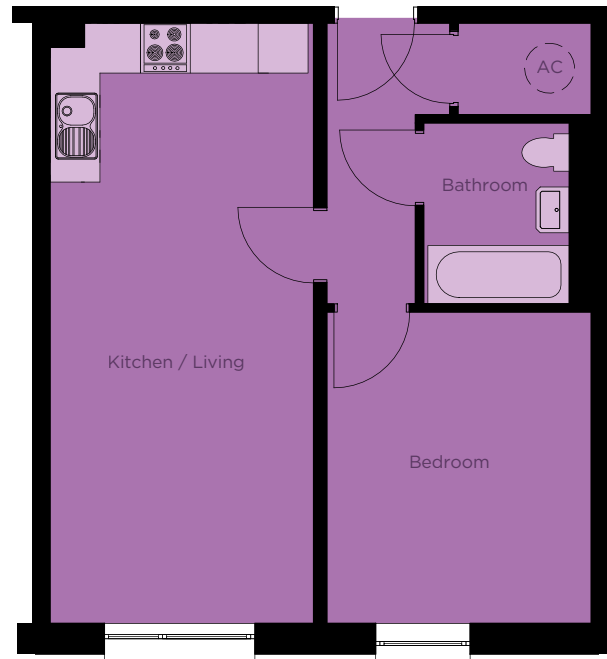
Handed: 23, 25, 65, 67

Glazed bay variant: 36, 38, 50, 52

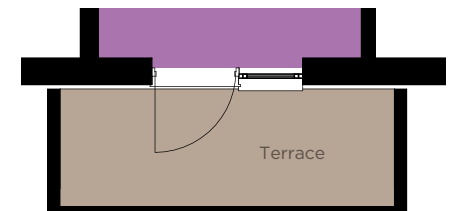
Handed bay variant: 37, 39, 51, 53

Terrace variant: 74, 83

Internal Area: 46.9 m² / 505 ft²

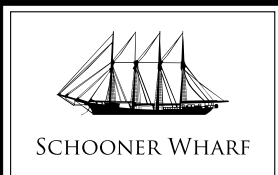


NOTE: Glazed bay variant to kitchen / living in apartments 36, 37, 38, 39, 50, 51, 52, 53



NOTE: Terrace variant to kitchen / living in apartments 74, 83

Kitchen / Living	7.22m	x	3.17m	23' 8"	x	10' 5"
Bedroom	3.74m	x	3.18m	12' 3"	x	10' 5"



SCHOONERWHARF.CO.UK
02920 468 450

This information has been provided in good faith, however all layouts and measurements are approximate only. The bathroom and kitchen layouts of some apartment types are indicative only and designs may change due to our process of continuous product development. For more information or detailed plans, please speak to a sales advisor. 09.17

APARTMENT G

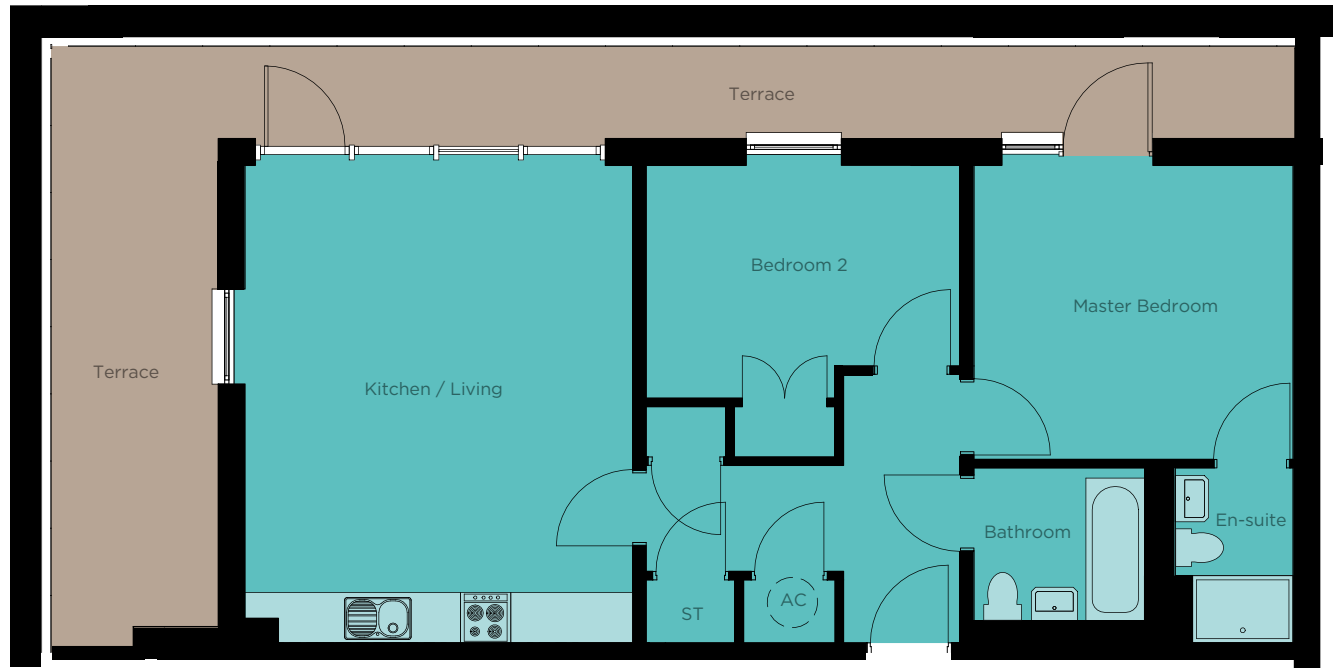
As shown: 72

Handed: 69

Reduced terrace variant: 81

Handed variant: 78

Internal Area: 71.1 m² / 765 ft²

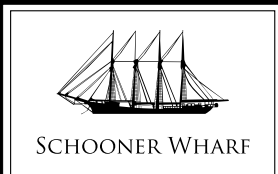
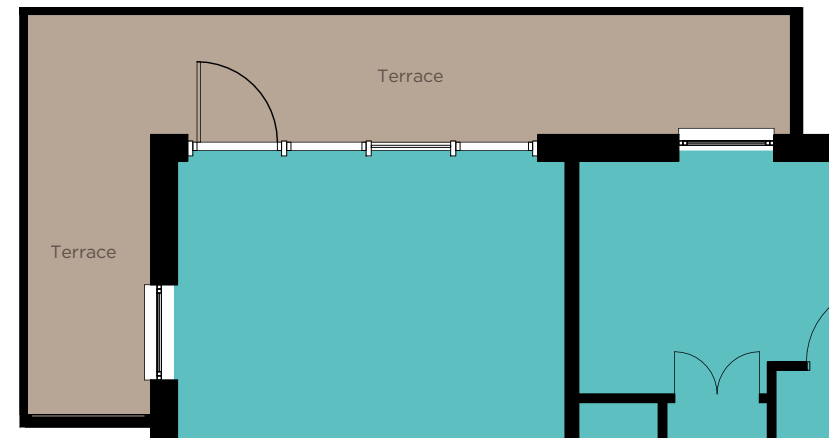


Note: apartments 69, 78 have
airing cupboard and store switched

NOTE: Terrace variant
to apartments 78, 81

Kitchen / Living	5.69m	x	4.62m	18' 8"	x	15' 2"
Master Bedroom	3.80m	x	3.51m	12' 6"	x	11' 6"
Bedroom 2	3.75m	x	2.77m	12' 4"	x	9' 1"

* maximum dimension



SCHOONERWHARF.CO.UK
02920 468 450

This information has been provided in good faith, however all layouts and measurements are approximate only. The bathroom and kitchen layouts of some apartment types are indicative only and designs may change due to our process of continuous product development. For more information or detailed plans, please speak to a sales advisor. 09.17

APARTMENT H

As shown: 70

Handed: 71

Reduced terrace variant: 80

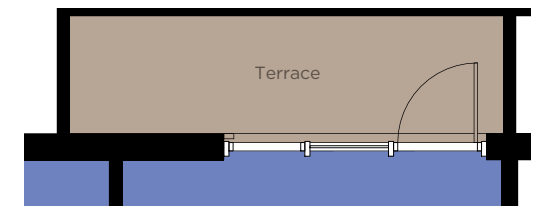
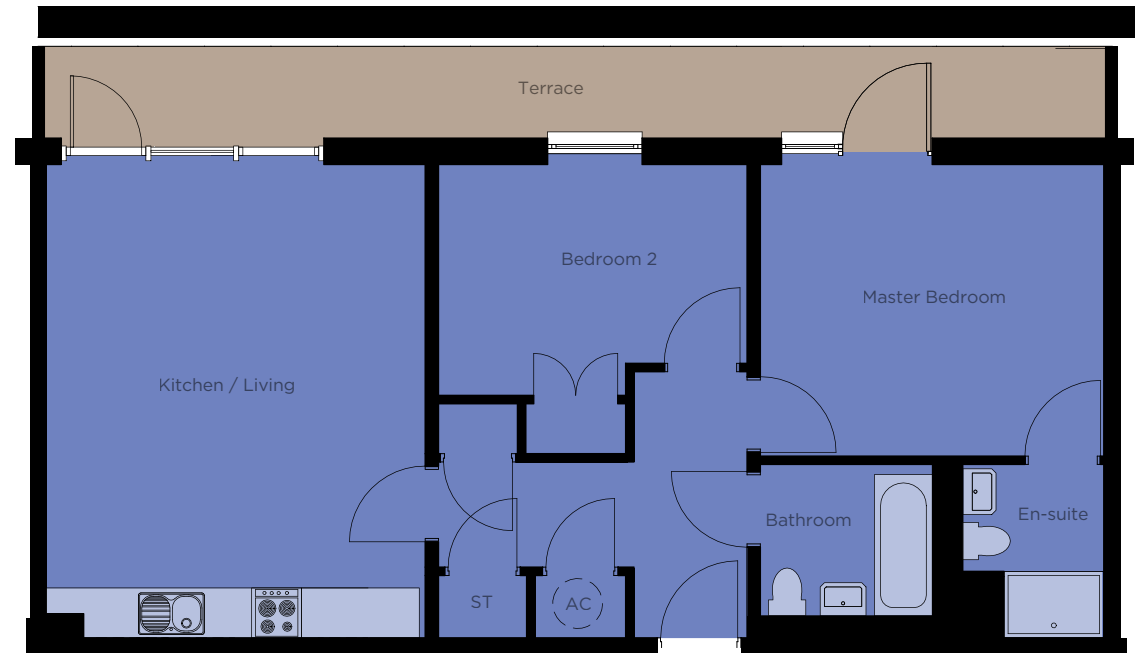
Handed reduced terrace variant: 79

Internal Area: 72.4 m² / 779 ft²

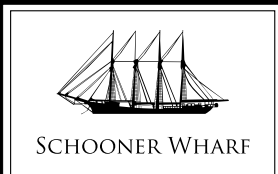
Note: apartments 71, 80 have
airing cupboard and store switched

Kitchen / Living	5.69m	x	4.56m	18' 8"	x	15' 0"
Master Bedroom	4.13m	x	3.51m	13' 7"	x	11' 6"
Bedroom 2	3.71m*	x	2.78m*	12' 2"*	x	9' 1"*

* maximum dimension



NOTE: Reduced terrace variant to apartments 79, 80



SCHOONERWHARF.CO.UK
02920 468 450

This information has been provided in good faith, however all layouts and measurements are approximate only. The bathroom and kitchen layouts of some apartment types are indicative only and designs may change due to our process of continuous product development. For more information or detailed plans, please speak to a sales advisor. 09.17

APARTMENT J

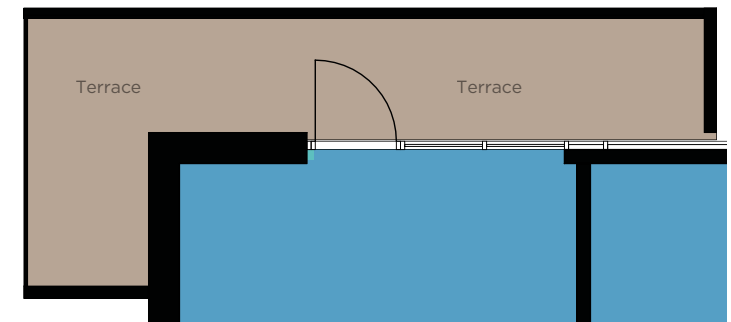
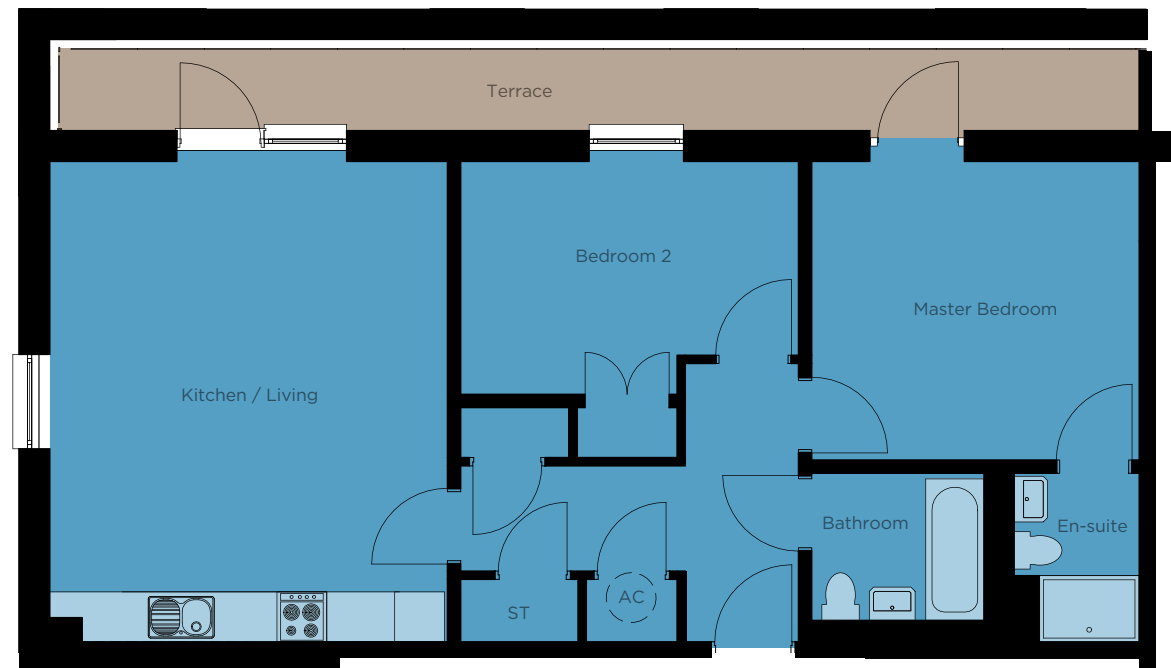
As shown: 73

Handed: 68

Reduced terrace variant: 82

Handed variant: 77

Internal Area: 75.6 m² / 814 ft²



Kitchen / Living	5.78m	x	4.78m	19' 0"	x	15' 8"
Master Bedroom	3.94m	x	3.59m	12' 11"	x	11' 9"
Bedroom 2	4.06m*	x	2.80m*	13' 4"*	x	9' 2"*

* maximum dimension



SCHOONERWHARF.CO.UK
02920 468 450

This information has been provided in good faith, however all layouts and measurements are approximate only. The bathroom and kitchen layouts of some apartment types are indicative only and designs may change due to our process of continuous product development. For more information or detailed plans, please speak to a sales advisor. 09.17

APARTMENT K

As shown: 75, 84

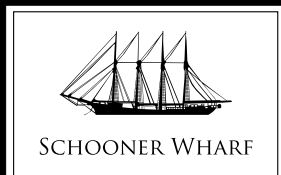
Handed: 76, 85

Internal Area: 71.3 m² / 767 ft²



Kitchen / Living	7.22m	x	3.65m	23' 8"	x	12' 0"
Master Bedroom	4.88m*	x	3.18m*	16' 0"*	x	10' 5"*
Bedroom 2	3.68m	x	2.74m	12' 1"	x	9' 0"

* maximum dimension



SCHOONERWHARF.CO.UK
02920 468 450

This information has been provided in good faith, however all layouts and measurements are approximate only. The bathroom and kitchen layouts of some apartment types are indicative only and designs may change due to our process of continuous product development. For more information or detailed plans, please speak to a sales advisor. 09.17

SPECIFICATION

KITCHEN

- Magnet Luna handleless kitchens
- Worktops with matching upstands
- Stainless steel inset sink
- Stainless steel appliances with Zanussi single oven, ceramic hob and extractor hood
- Integrated fridge freezer



BATHROOM / EN-SUITE

- White contemporary bathroom suite
- Chrome mixer tap with shower over bath
- Glass shower screen
- White contemporary en-suite with chrome shower fittings



ELECTRICAL & HEATING

- Video door entry system
- TV points in living room and master bedroom
- Spotlights to kitchen, bathroom and en-suite
- Pendant light fittings to living room and bedrooms
- White sockets and switches
- Telephone point in living room
- Sprinkler systems in all apartments
- Mains linked smoke & carbon monoxide alarms
- Electrical panel heating system throughout
- Wiring for SKY+ and Virgin to living room



INTERIOR FINISHES

- Veneered effect internal doors with polished ironmongery
- Vinyl flooring to kitchen/living room, bathroom and en-suite
- Painted throughout

EXTERNAL FINISHES

- Secured By Design compliant apartment entrance door with 5-lever multi-locking system
- High performance aluminium windows & balcony doors
- Thermally efficient cavity wall system with masonry & cladding

WARRANTY

- 10 year NHBC



SCHOONERWHARF.CO.UK
02920 468 450

Images are representative only, for more information please speak to a sales advisor.

