





2



1



1

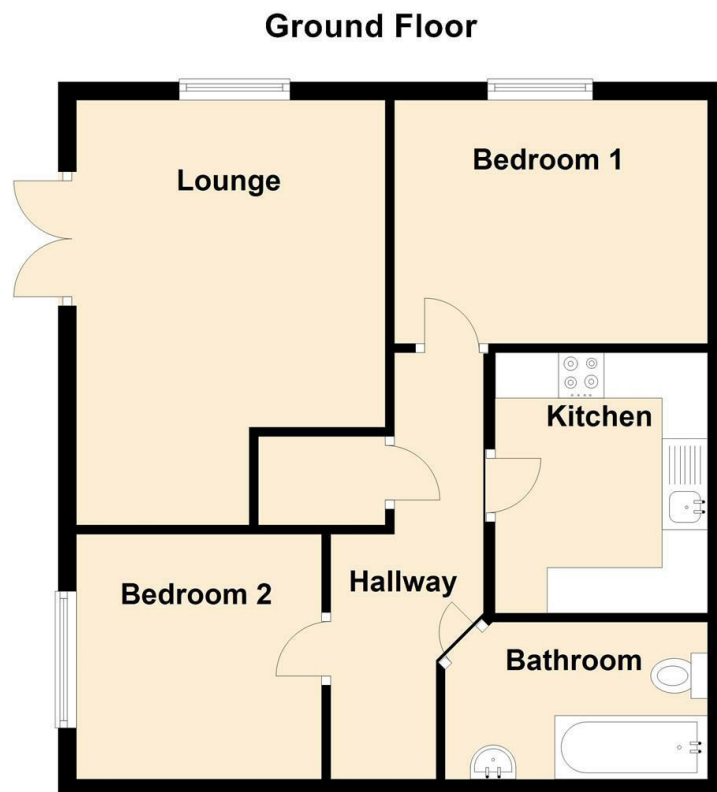
- Top Floor Apartment
- Ideal First Time Buy
- Excellent Location
- Two Bedrooms
- Situated In The Staithes
- Close To All Local Amenities





Offered for sale with no upper chain this two bedroom top floor apartment must be viewed. The apartment is located within the popular Staithes development and will appeal to a variety of buyers. The apartment briefly comprises:- hallway with storage, separate modern kitchen, lounge with Juliet balcony, two bedrooms and a modern bathroom. The property benefits from gas central heating and double glazing. Viewings come highly recommended. For more information and to book your viewing please call our sales team on 0191 487 0800.



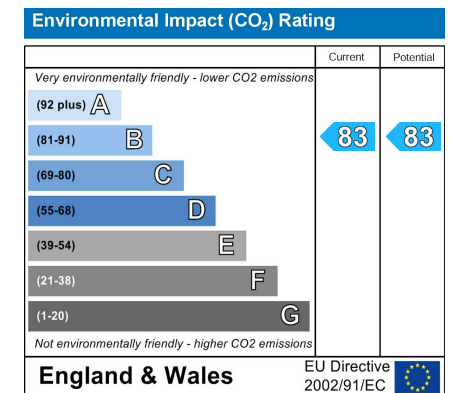
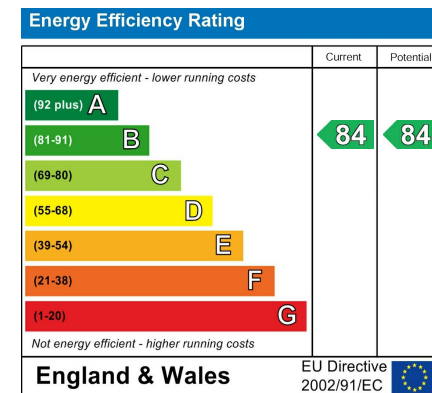


Lounge 15'3" x 11'1" (4.67 x 3.39)

Kitchen 7'8" x 9'5" (2.35 x 2.89)

Master Bedroom 8'8" x 11'3" (2.65 x 3.45)

Bedroom Two 8'10" x 8'9" (2.70 x 2.68)



The difference between house and home

You may download, store and use the material for your own personal use and research. You may not republish, retransmit, redistribute or otherwise make the material available to any party or make the same available on any website, online service or bulletin board of your own or of any other party or make the same available in hard copy or in any other media without the website owner's express prior written consent. The website owner's copyright must remain on all reproductions of material taken from this website.



www.janforsterstates.com

Gosforth 0191 236 2070
 Newcastle 0191 284 4050
 Forest Hall 0191 605 3134
 High Heaton 0191 270 1122
 Low Fell 0191 487 0800
 Tynemouth 0191 257 2000
 Whitley Bay 0191 251 3000
 Property Management Centre 0191 236 2680

