



SALES

LETTINGS

MANAGEMENT

chiswick@tatepartnership.co.uk

020 8996 0000

TATEPARTNERSHIP.CO.UK



Park Mansions, W6.

£1,995 pcm

This is a Lovely place to live, an attractive Private purpose built block overlooking the Park, with private car park. Well presented, this second floor one bedroom apartment extends to 513 sq/ft. The accommodation comprises, entrance hall, modern open plan kitchen/living/dining areas, large double bedroom, stone-tiled bathroom with shower over bath. Gated Private Car Park for residents, with allocated parking space. Park Mansions is located on Stamford Brook Avenue opposite Stamford Brook Common and just a few minutes walk to Stamford Brook station. Chiswick High Road & King Street are just 5 minutes walking. Available mid-Jan, Part Furnished.

Park Mansions

Approximate Gross Internal Area = 47.7 sq m / 513 sq ft

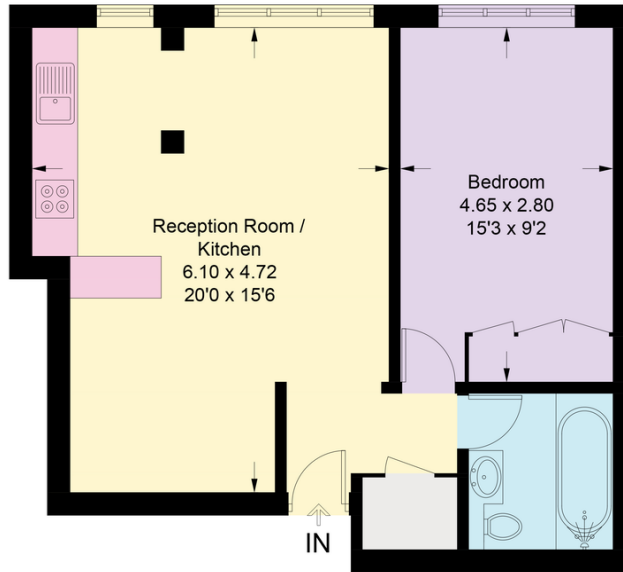


Illustration for identification purposes only, measurements are approximate, not to scale. Fourlabs.co © (ID1138231)

EPC

Energy Efficiency Rating	Current	Potential
Very energy efficient - lower running costs		
(92-100) A		
(81-91) B		
(69-80) C		
(55-68) D		
(39-54) E		
(21-38) F		
(1-20) G		
Not energy efficient - higher running costs		
	83	87
England & Wales	EU Directive 2002/91/EC	

Environmental Impact (CO ₂) Rating	Current	Potential
Very environmentally friendly - lower CO ₂ emissions		
(92-100) A		
(81-91) B		
(69-80) C		
(55-68) D		
(39-54) E		
(21-38) F		
(1-20) G		
Not environmentally friendly - higher CO ₂ emissions		
	83	87
England & Wales	EU Directive 2002/91/EC	