



Ventnor Villas, Hove, Sussex, BN3 3DE

Guide Price £175,000 to £195,000

mishon  
welton



like this?

See more online at  
[mishonwelton.co.uk](http://mishonwelton.co.uk)



## Guide Price £175,000 to £195,000

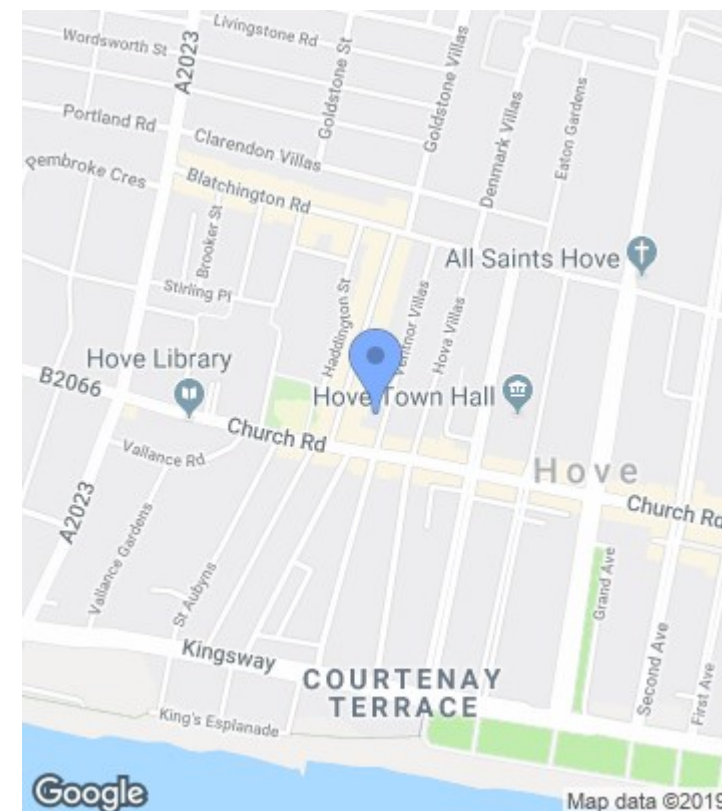
- Share of Freehold
- High Ceilings
- Hove Mainline Station Nearby
- Period Converted Apartment
- Close to Seafront
- Tree Lined Street
- Prime Central Location

## Description

We are delighted to present this well appointed, period converted studio apartment with lovely high ceilings and light bright accommodation.

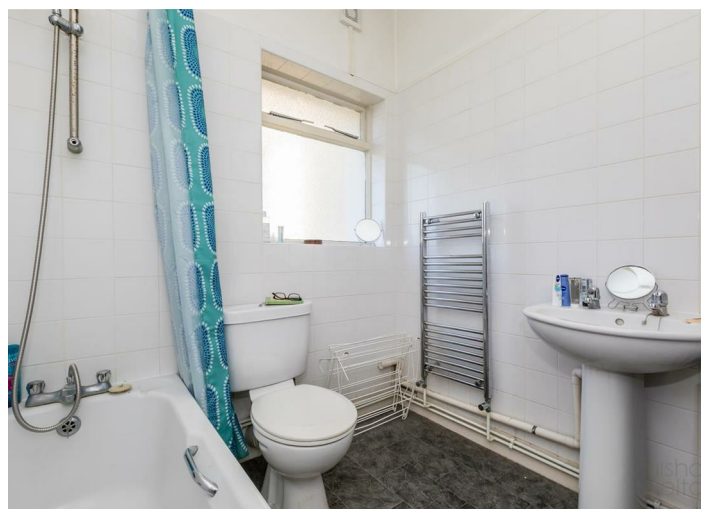
The property itself has a spacious feel, boasting a generous main living room with high ceilings, perfectly in keeping with the age of the property. Off the entrance hallway is the bathroom with bath, WC and hand basin and the kitchen. The property has the benefit of a share in the freehold and viewing is highly advised.

Ventnor Villas is a one way street in the heart of Hove and is tree lined providing a green oasis in the heart of Hove. It is within walking distance of superb transport links including Hove main train line station and bus routes in and out of Brighton city centre. Nearby George Street, Church Road and Blatchington Road have a huge selection of shopping facilities, bars, café's and restaurants and it is also within walking distance of the famous Brighton & Hove promenade and the seafront.

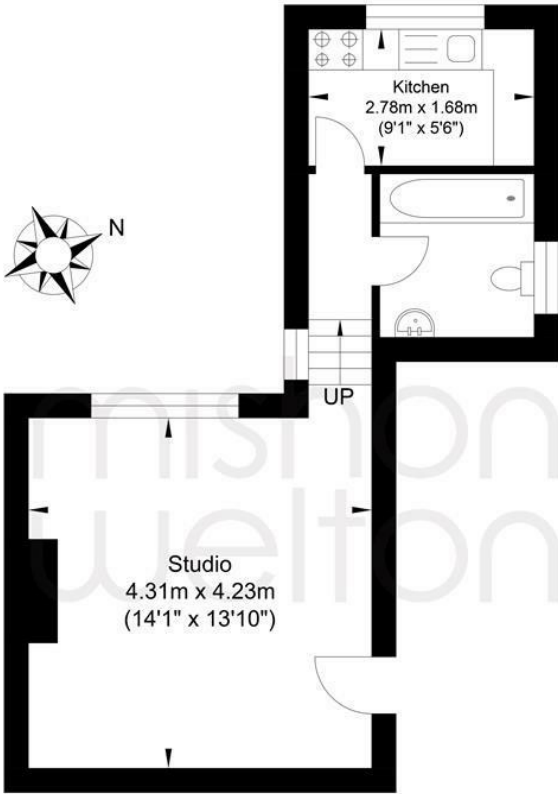


### Area

The Central Hove area is exceptionally popular with buyers wanting to live in a busy and vibrant area where there is plenty going on. There are numerous bars and restaurants in Church Road catering for all tastes and expectations, all of which are within close proximity.



Ventnor Villas, Hove



First Floor  
Approximate Floor Area  
317.96 sq ft  
(29.54 sq m)

Approximate Gross Internal Area = 29.54 sq m / 317.96 sq ft  
Illustration for identification purposed only, measurements are approximate, not to scale.  
Copyright GDImpact 2019

These floor plans are intended as a guide only. Dimensions are approximate and not to scale. Whilst we have taken every care with the preparation of these details, they do not form any part of an offer or contract and are for guidance only. We have not tested any apparatus, equipment, fittings or services and cannot verify they are in working order.

