

GLIDDON ROAD

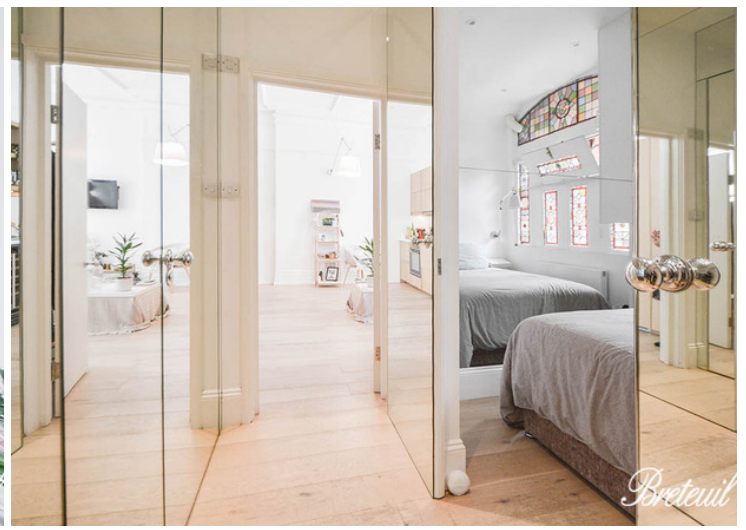
LONDON



£495,000
LEASEHOLD

Breteuil

GLIDDON ROAD



- 1 Bedroom Flat
- Wooden floors
- High corniced ceiling
- Modern open plan kitchen

Set on the raised ground floor of this Victorian building, this flat has been renovated to meticulous condition. Generous entry way, vast reception room, open-plan kitchen. Double bedroom, hotel like shower room plus walk in wardrobe

GLIDDON ROAD

Set on the raised ground floor of this Victorian building, this one bedroom has been renovated to meticulous condition. The generous entry way opens to a vast reception room with an open-plan kitchen. Light pours in through huge bow windows and the high plastered ceilings add to the feeling of space.. The cosy double bedroom is bright yet private thanks to the beautiful stained glass work. The shower room has been finished to a sleek hotel look and there is a fabulous concealed walk in wardrobe behind the mirrored hallway doors.

Wooden floors throughout

£495,000

LEASEHOLD

These particulars do not form part of any offer or contract and must not be relied upon as statements or representations of fact. Any areas, measurements or distances are approximate. The text, photographs and plans are for guidance only and are not necessarily comprehensive. It should not be assumed that the property has all the necessary planning, building regulation or other consents and we have not tested any services, equipment or facilities. Purchasers must satisfy themselves by inspection or otherwise.



GLIDDON ROAD

Gliddon Road, W14

Approximate Gross Internal Area
41.4 sq m / 446 sq ft



Ground Floor

This plan is for layout guidance only. Not drawn to scale unless stated. Windows and door openings are approximate. Whilst every care is taken in the preparation of this plan, please check all dimensions, shapes and compass bearings before making any decisions reliant upon them. (ID549987)

£495,000

LEASEHOLD

These particulars do not form part of any offer or contract and must not be relied upon as statements or representations of fact. Any areas, measurements or distances are approximate. The text, photographs and plans are for guidance only and are not necessarily comprehensive. It should not be assumed that the property has all the necessary planning, building regulation or other consents and we have not tested any services, equipment or facilities. Purchasers must satisfy themselves by inspection or otherwise.

Breteuil