



David
Astburys



David
Astburys
ESTATE AGENTS

- Semi Detached Period Building
- Share of Freehold
- Second Floor (Top)
- Terrace
- Separate Kitchen
- Large Living Room

Elder Avenue, Crouch End N8

£550,000

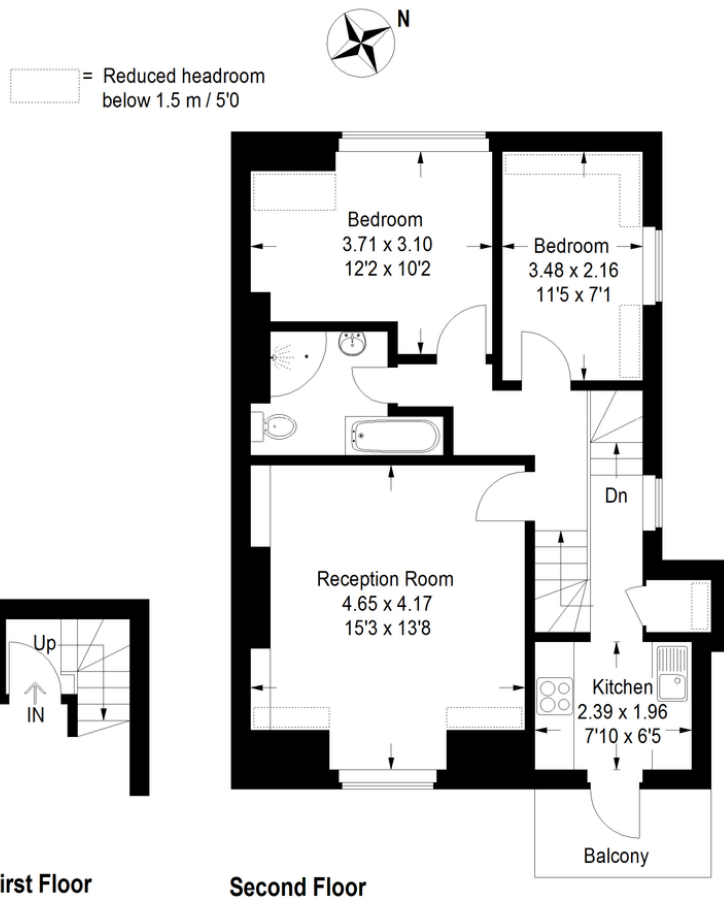
A 666 square foot split level apartment situated within a semi-detached period building within the catchment to Ofsted Rated Coleridge and Rokesly Primary School.

The apartment is full of character and boasts a Share of Freehold, a private terrace and a huge storage cupboard in the hallway.

Further comprising two double bedrooms, a large reception room, a family bathroom, separate kitchen with direct access out to a terrace.

Elder Avenue, N8

Approximate Gross Internal Area
(Including Reduced Headroom)
61.9 sq m / 666 sq ft



Measured in accordance with BCS Code of Measuring Practice. To be used for identification and guidance purposes only.
 Whilst every care is taken in the preparation of this plan, please check all dimensions, shapes and compass bearings before making any decisions reliant upon them.
 www.ejlajkh.co.uk ©2019 info@ejlajkh.co.uk



15 Park Road, Crouch End,
London, N8 8TE

<http://www.davidastburys.com>
 0203 000 6787
crouchend@davidastburys.com

Agents Note: Whilst every care has been taken to prepare these sales particulars, they are for guidance purposes only. All measurements are approximate and for general guidance purposes only and whilst every care has been taken to ensure their accuracy, they should not be relied upon and potential buyers are advised to recheck the measurements.