



MILES ESTATE AGENTS

8 Mount Street  
Taunton TA1 3QB





A charming, well presented and extended 2 bedroom Grade II Listed end terrace town house with lovely courtyard garden in this prime location close to the town centre and Vivary Park.

No parking but immediately available with no onward chain. Early viewing highly recommended.





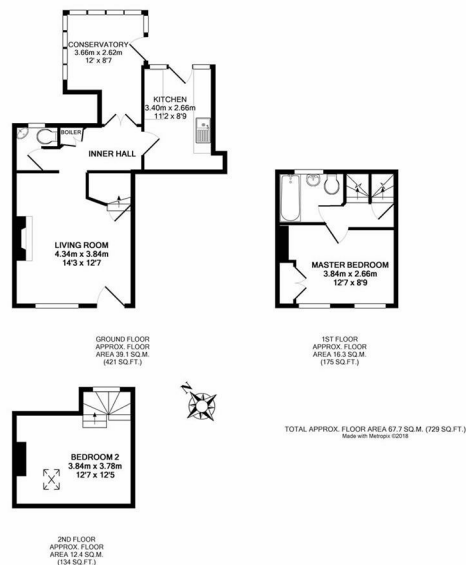


### Features:

- Spacious Sitting Room
- Kitchen
- Conservatory
- Cloakroom
- 2 Double Bedrooms
- Shower Room
- Pretty Courtyard Garden
- No Onward Chain
- Council Tax Band B







Viewings strictly through the selling agents:

**Miles Estate Agents**

2 Piffin Lane, Bishops Lydeard, Taunton,  
Somerset, TA4 3AS

**Tel: 01823 470 500**

[lydeard@milesestateagents.co.uk](mailto:lydeard@milesestateagents.co.uk)

[www.milesestateagents.co.uk](http://www.milesestateagents.co.uk)

**rightmove** 

**Zoopla.co.uk**

**OnTheMarket.com**

**MILES ESTATE AGENTS**