



Offices also at: Wilmslow, Macclesfield, Hale, Sale, Chorlton, Glossop, Manchester & Salford

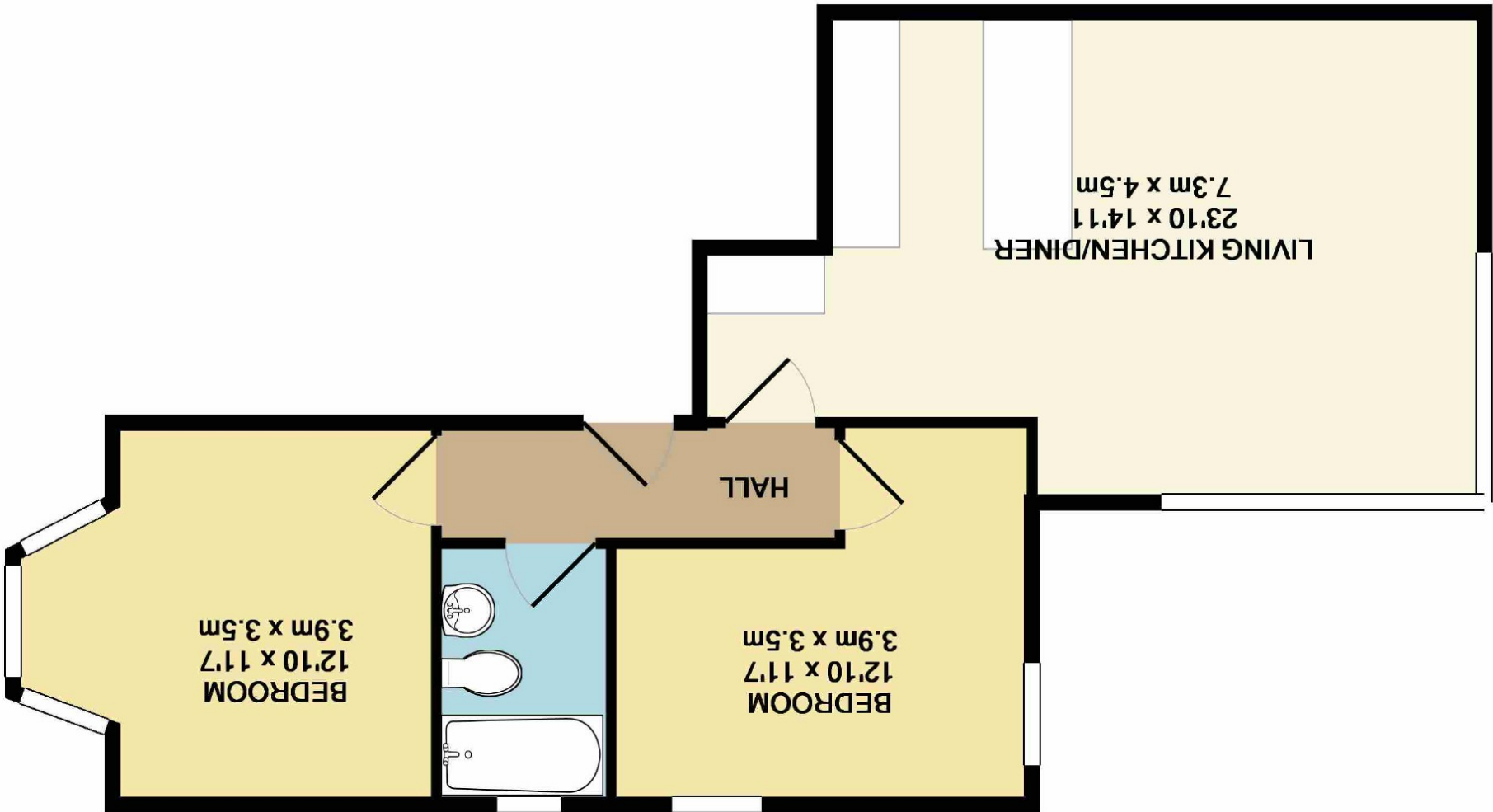
These particulars are believed to be accurate but they are not guaranteed and do not form a contract. Neither Jordan fishwick nor the vendor or lessor accept any responsibility in respect of these particulars, which are not intended to be statements or representations of fact and any intending purchaser or lessee must satisfy himself by inspection or otherwise as to the correctness of each of the statements contained in these particulars. Any floorplans on this brochure are for illustrative purposes only and are not necessarily to scale.

chorton@jordanfishwick.co.uk
www.jordanfishwick.co.uk

0161 860 4444

410-412 Barlow Moor Road, Chorlton, Manchester, M21

TOTAL APPROX. FLOOR AREA 645 SQ.FT. (59.9 SQ.M.)
Measurements are approximate. Not to scale. Illustrative purposes only
Made with Metropix ©2019





Apartment 4, 57-59 High Lane
Chorlton M21 9FA
£260,000

The Property

****FIRST RELEASE OF PHASE TWO****
STUNNING GROUND FLOOR APARTMENT IN THIS EXCLUSIVE DEVELOPMENT!

Following a successful launch last week of Phase One of this development of 12 apartments we are happy to offer an early release of this ground floor apartment due for completion within the next 4 weeks.

This ground floor apartment provides light and spacious accommodation comprising; hallway, large open plan lounge/modern fitted kitchen, two double bedrooms one with stunning full length feature bay window and contemporary

bathroom with under floor heating. High spec fittings including oak flooring and doors, allocated parking, access to shared roof garden. Luxurious living and conveniently located for fashionable Beech Road and Chorlton Village with a choice of Metro's within walking distance.

- Ground Floor apartment finished to the highest standard
- Two double bedrooms
- Stunning contemporary Kitchen & bathroom
- Open plan kitchen/living room
- Communal parking is also available
- Use of communal roof garden

HALLWAY
LIVING KITCHEN/DINER 7.3m x 4.5m
BEDROOM 3.9m x 3.5m
BEDROOM 3.9m x 3.4m
BATHROOM 3.2m x 1.6m

Postcode - M21 9FA
EPC Rating -
Local Authority - Manchester City Council
Council Tax - Band

