

Kings

ESTATE AGENTS LETTINGS SURVEYORS LAND AGENTS NEW HOMES FINANCIAL SERVICES



FRONT/NORTH ELEVATION

246 Robin Hood Lane, Chatham, ME5 9JY

Guide price £500,000

A building plot measuring 0.25 acres with planing permission granted for the erection of a substantial detached house of 4450 sq' and double garage.

The proposed two storey dwelling has 5 bedrooms and 5 en-suite accommodation as well as spacious ground floor living areas.

Robin Hood Lane is a highly sought after location with several large homes and excellent access to the M2/M20 motorway networks.

Plans are available to view by clicking the virtual tours link.



REAR/SOUTH ELEVATION

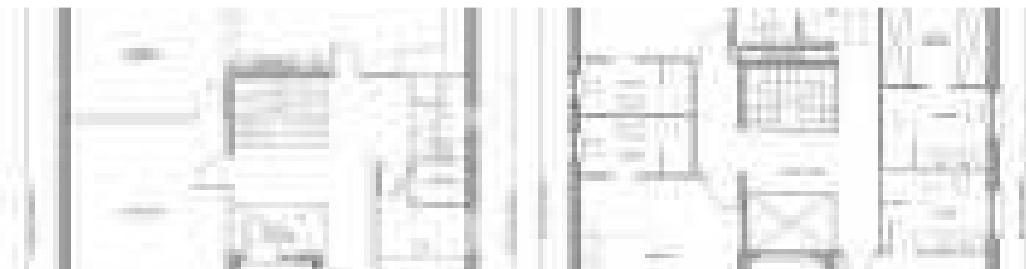


SIDE ELEVATION



246 Robin Hood Lane, Chatham, ME5 9JY

You may download, store and use the material for your own personal use and research. You may not republish, retransmit, redistribute or otherwise make the material available to any party or make the same available on any website, online service or bulletin board of your own or of any other party or make the same available in hard copy or in any other media without the website owner's express prior written consent. The website owner's copyright must remain on all reproductions of material taken from this website.



Station Approach, Meopham, Kent DA13 0HP
Tel: (01474) 814440 Fax: (01474) 812042
email: meopham@kings-estate-agents.co.uk www.kings-estate-agents.co.uk

Registered Office: 4 Station Parade, London Road, Sevenoaks, Kent TN13 1DL Registered in England No 2754515
Managing Director C.J. Williams FNAEA MLNAD Inst.