



HEAD OFFICE:
14 Claughton Street
St Helens, WA10 1RS
TEL: 01744 24341
sthelens@johnbrowns.co.uk
www.johnbrowns.co.uk



Bickerstaffe Street, St. Helens, WA10 1DS

We are pleased to offer for rent this first floor commercial unit which was previously occupied by an Insurance Broker but would suit various businesses and as it situated above Betfred in a busy location there is plenty of footfall. The accommodation briefly comprises of a waiting area, reception, three offices, wc , store room and kitchen. Currently furnished with storage and desks but can be unfurnished if requested. Available to rent now, viewing is highly recommended and can be arranged via our office or by calling us on 01744 24341.

- | | | |
|----------------------|--------------------------|-----------------|
| ■ First Floor Unit | ■ Waiting Area/Reception | ■ Three Offices |
| ■ WC and Kitchen | ■ Store Room | ■ Busy Location |
| ■ Plenty of Footflow | ■ Viewing Essential | ■ Available Now |
| ■ EPC Rating: TBC | | |

£100 Per Week

70-74 Bickerstaffe Street, St. Helens, WA10 1DS

Entrance

Entrance to ground floor with stairs to first floor, window to side aspect

Waiting Area

6'4 x 14'09 (1.93m x 4.50m)

Door accessing reception and offices

Reception

10'4 x 19'0 (3.15m x 5.79m)

Window to front aspect, radiator

Main Office

12'7 x 18'5 (3.84m x 5.61m)

Two windows to front aspect, two radiators

Second Office

10'1 x 12'0 (3.07m x 3.66m)

Window to rear aspect, radiator

Third Office

8'10 x 9'10 (2.69m x 3.00m)

Window to side aspect, radiator

WC

Hand wash basin, low level wc

Store Room

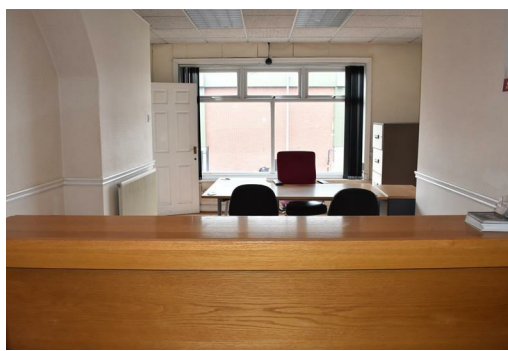
6'0 x 12'0 (1.83m x 3.66m)

Window to rear aspect, radiator

Kitchen

7'3x 11'11 (2.21mx 3.63m)

Window to side aspect, stainless steel sink unit







Energy Efficiency Rating		
	Current	Potential
Very energy efficient - lower running costs		
(92 plus) A		
(81-91) B		
(69-80) C		
(55-68) D		
(39-54) E		
(21-38) F		
(1-20) G		
Not energy efficient - higher running costs		
England & Wales		EU Directive 2002/91/EC
Environmental Impact (CO ₂) Rating		
	Current	Potential
Very environmentally friendly - lower CO ₂ emissions		
(92 plus) A		
(81-91) B		
(69-80) C		
(55-68) D		
(39-54) E		
(21-38) F		
(1-20) G		
Not environmentally friendly - higher CO ₂ emissions		
England & Wales		EU Directive 2002/91/EC