

MERCHANT SQUARE
EAST, LONDON W2

£950 pw



NO
TENANT FEES



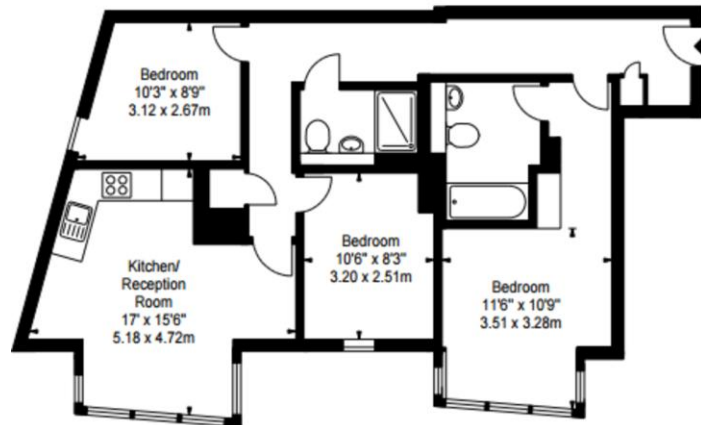
No Tenant Fees!... This spacious interior designed three-bedroom apartment is set within a modern block in the sought after Paddington Basin in W2.

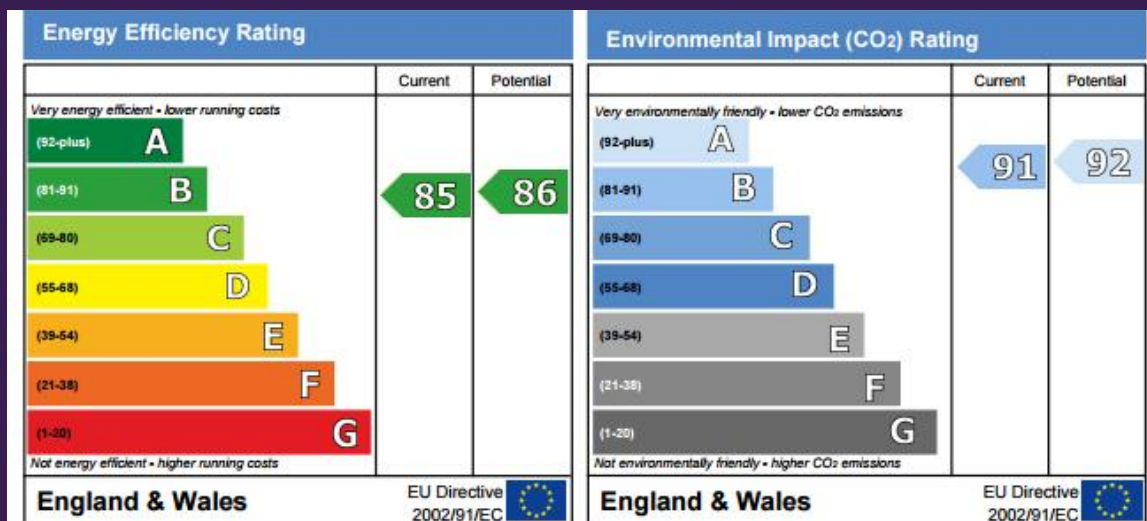




WHAT ELSE...

- Spacious reception room
- Modern fitted open plan kitchen
- Two bedrooms
- Two bathrooms
- Ample of storage
- Secure underground parking
- Concierge
- Third floor
- Lift service
- Excellent transport links
- Energy Efficiency Rating B.





If you are looking to sell or rent your property, would like a current market appraisal or just want to keep up to date with property news in your local area...

Call us on 0207 723 8082 or email info@keypropertylondon.com

