



Bovet Court, Harford Street

London, E1 4GE

£1,800 pcm

- Secure Private Development
- Two Double Bedrooms
- Open Plan Kitchen/Lounge
- Modern Neutral Décor
- Balcony
- Excellent Transport Links



1



2



2

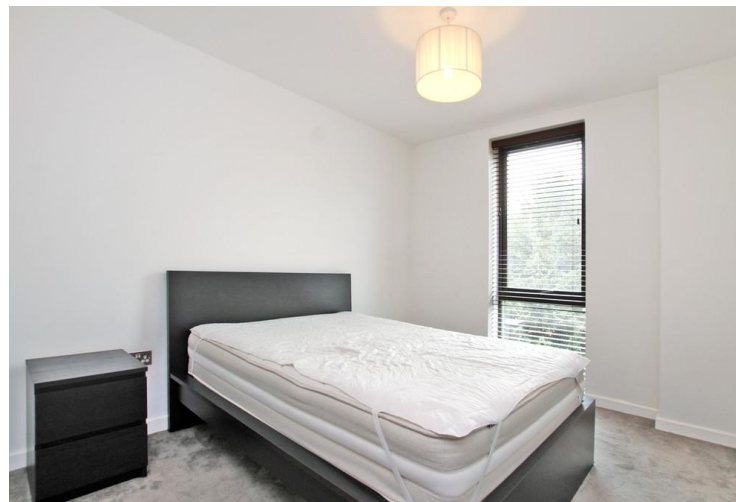
Property Description

SoStepney is a fantastic new development located in the heart of Stepney Green providing a great living environment for professionals and families alike. The property itself boasts two well proportioned double bedrooms, master with fitted wardrobes and en-suite.

The property enjoys an open-plan living space with a chic fully integrated kitchen with a breakfast bar leading onto a well proportioned private balcony. Further features include wood floors, spotlights, gas central heating and a modern neutral decor throughout. Offered furnished. Finished to an extremely high standard this apartment will create a sumptuous style of living for the discerning professional. The development also offers communal gardens for recreation and entertaining.

The green open spaces of Mile End Park are to hand and Mile End Stadium is just a stones throw. The accommodation is located in a Residential setting with swift links to the City and Docklands.

The closest underground station are Stepney Green (District and Hammersmith & City lines) and Mile End (Central, District and Hammersmith & City lines), with Limehouse (Docklands Light Railway, British Rail) also within easy reach, while for motorists there is easy access to the A11 and A13 for routes out of London to the East.



Find us on   

[mydeposits.co.uk](https://www.mydeposits.co.uk)



[rightmove](https://www.rightmove.co.uk)[🏠]
find your happy

[Zoopla.co.uk](https://www.zoopla.co.uk)

 PrimeLocation



Registered Office
311 commercial Road, E1 2PS

www.netlettings.com
management@netlettings.com
020 8981 5551

Agents Note: Whilst every care has been taken to prepare these particulars, they are for guidance purposes only. All measurements are approximate are for general guidance purposes only and whilst every care has been taken to ensure their accuracy, they should not be relied upon and potential tenants are advised to recheck the measurements.