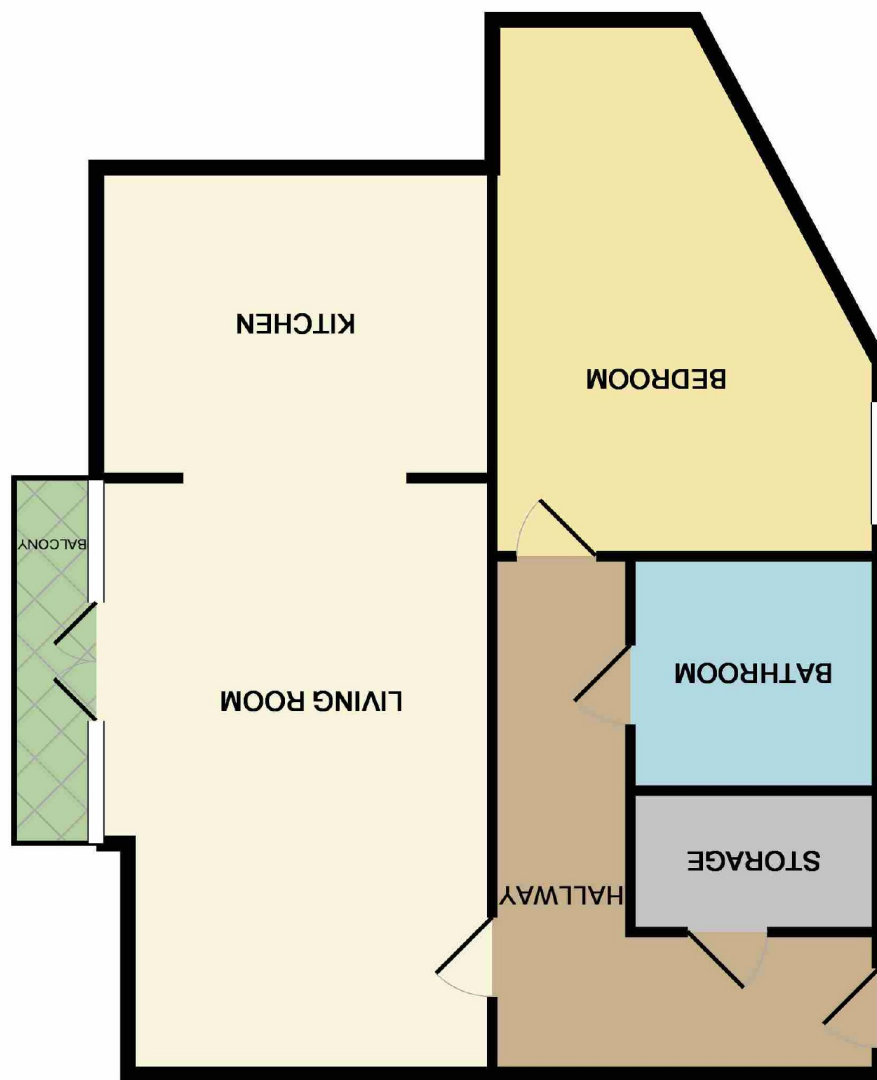


Measurements are approximate. Not to scale. Illustrative purposes only.
Made with Metropix ©2017





City Gate 1, Manchester
M15 4JT
Price £155,000



The Property

This second floor larger than average one bedroom apartment is located in the heart of Castlefield, a short walk from Deansgate and Spinningfields. With its central location this apartment is perfect for the FTB looking to get there foot on the property ladder or equally the city centre professional wanting a short walking distance to the centre, The apartment which offers excellent accommodation with entrance hall, cupboard housing a washer/dryer, generous size living room with balcony off and separate modern fully fitted kitchen with integrated appliances. Generous size bedroom and attractive three piece suite with shower. No Parking. No Chain.

Directions

- Second Floor Apartment
- Large One Bedroom
- Separate Modern Fitted Kitchen
- Balcony
- Prime Castlefield Location
- No Parking
- No Chain

Postcode - M15 4JT
EPC Rating - D
Floor Area - 570 sq ft
Local Authority -
Council Tax - Band

