

South Square London NW11



- Three Bedrooms
- Eat In Kitchen
- Two Bathrooms
- Lovely Communal Gardens

A delightful 3 bedroom apartment situated in this popular Grade II listed block in Hampstead Garden Suburb. This charming home comprises of a modern fitted kitchen, spacious reception, 2 bathrooms (one en suite) and well maintained communal gardens.

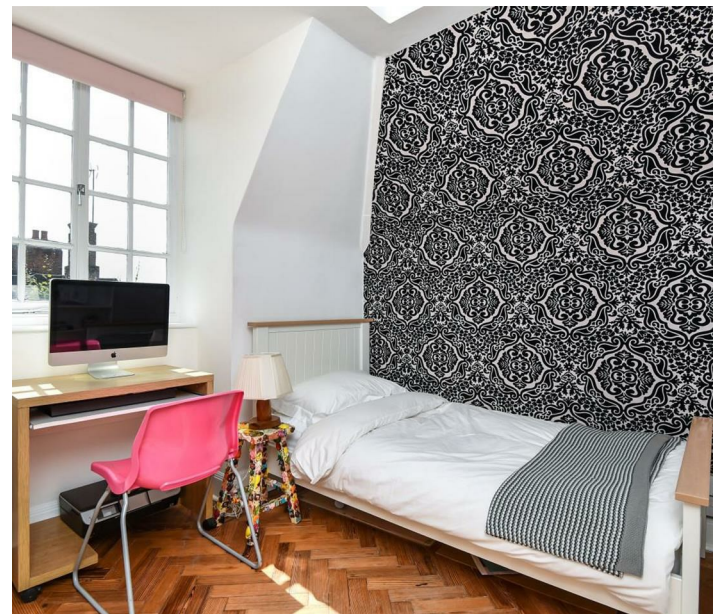
The property is located in a highly desirable area and close to Hampstead Heath Extension, Golders Green station and local amenities.

£819,995

15 Temple Fortune Parade Finchley Road London NW11 0QS

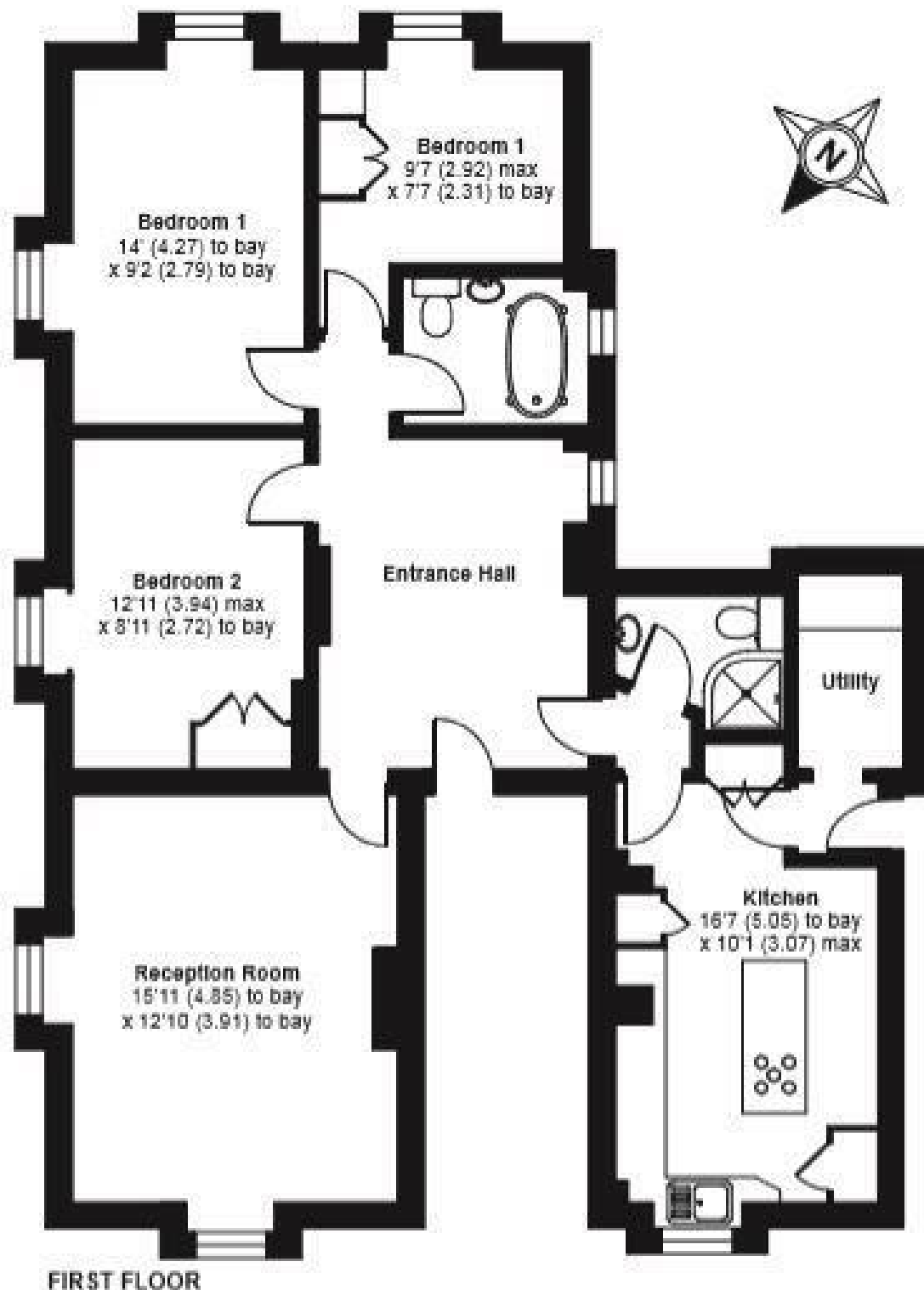
☎ 020 8209 0101 ✉ info@alangoldinestates.co.uk 🌐 alangoldinestates.co.uk

Registered in England No. 3252459 Registered Office: Sterling House, Fulbourne Rd, Walthamstow, London E17 4EE



South Square, London, NW11

APPROX. GROSS INTERNAL FLOOR AREA 1055 SQ FT 97.8 SQ METRES



Whilst every attempt has been made to ensure the accuracy of the floor plan contained here, measurements of doors, windows and rooms are approximate and no responsibility is taken for any error, omission or misstatement. These plans are for representation purposes only as defined by RICS Code of Measuring Practice and should be used as such by any prospective purchaser. Specifically no guarantee is given on the total square footage of the property if quoted on this plan. Any figure given is for initial guidance only and should not be relied on as a basis of valuation.

Copyright nishcom.co.uk 2018 Produced for LPP Estates REF : 565817