







- Town House
- Superbly Presented
- Day Room
- Three Bedrooms
- Three Storey
- Integral Garage
- Study
- Viewing Recommended



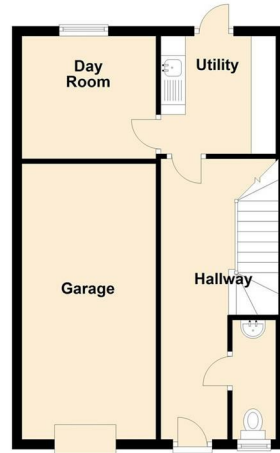




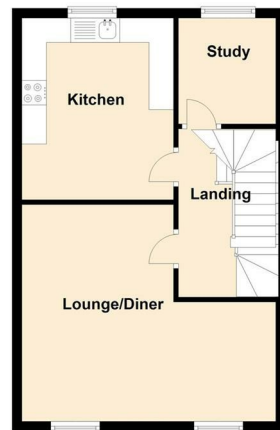
This well presented three bedroom town house must be viewed. The property is located within this popular development and will appeal to a number of buyers. The property is close to excellent transport links and briefly comprises; hallway, downstairs WC, utility room and day room. To the first floor there is the modern breakfasting kitchen, spacious lounge diner and study. To the second floor there are three bedrooms, the master with en-suite and there is also a family bathroom. The property benefits from gas central heating and double glazing. Externally there are gardens to the rear and a driveway to the front leading to an integral garage. Early viewings are anticipated. Please call our sales team in 0191 487 0800 for more information and to arrange a viewing.



Ground Floor



First Floor



## The difference between house and home

You may download, store and use the material for your own personal use and research. You may not republish, retransmit, redistribute or otherwise make the material available to any party or make the same available on any website, online service or bulletin board of your own or of any other party or make the same available in hard copy or in any other media without the website owner's express prior written consent. The website owner's copyright must remain on all reproductions of material taken from this website.

Lounge 13'10" x 16'9" (4.22 x 5.12)

Kitchen 10'2" x 12'2" (3.12 x 3.71)

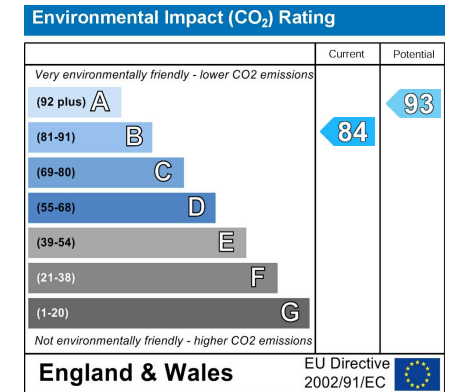
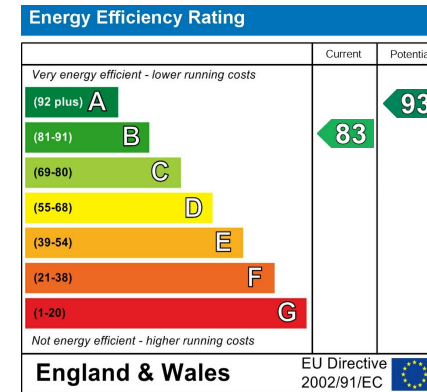
Utility Room 7'11" x 7'6" (2.43 x 2.29)

Study 6'11" x 6'4" (2.13 x 1.95)

Bedroom One 13'11" x 9'7" (4.26 x 2.93)

Bedroom Two 9'6" x 9'4" (2.92 x 2.85)

Bedroom Three 8'2" x 6'11" (2.50 x 2.11)



Gosforth 0191 236 2070  
 Newcastle 0191 284 4050  
 Forest Hall 0191 605 3134  
 High Heaton 0191 270 1122  
 Low Fell 0191 487 0800  
 Tynemouth 0191 257 2000  
 Whitley Bay 0191 251 3000  
 Property Management Centre 0191 236 2680

