

# The Wycombe | 4 Bedroomed House



**The Wycombe is a luxury detached four-bedroom home with integral garage offering high end contemporary living throughout. The ground floor boasts a large living room and a stunning open plan kitchen, dining, living area with French doors leading to a beautiful landscaped garden.**

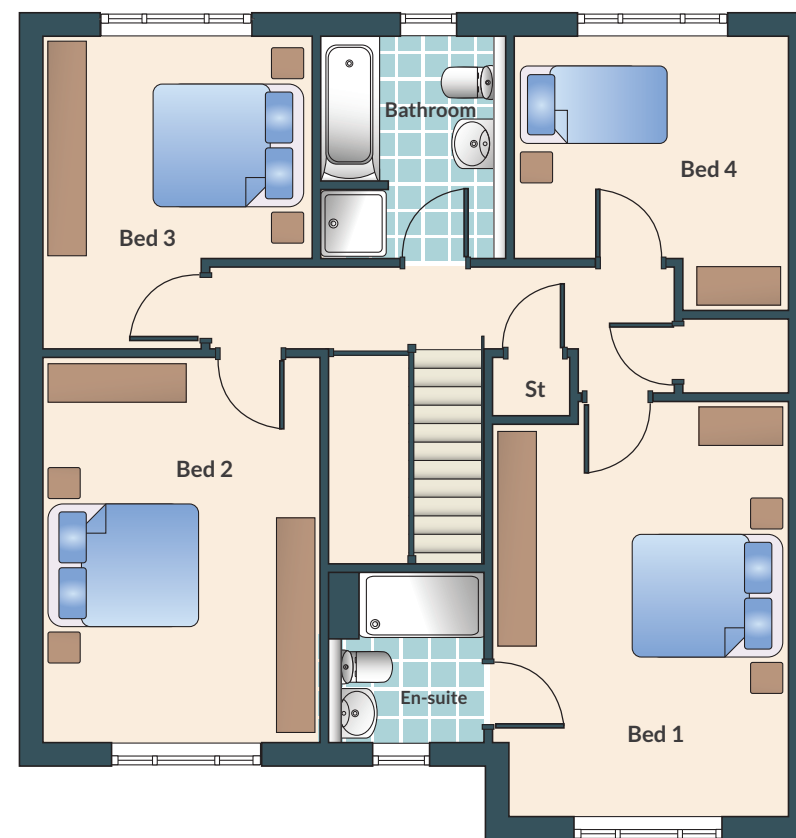
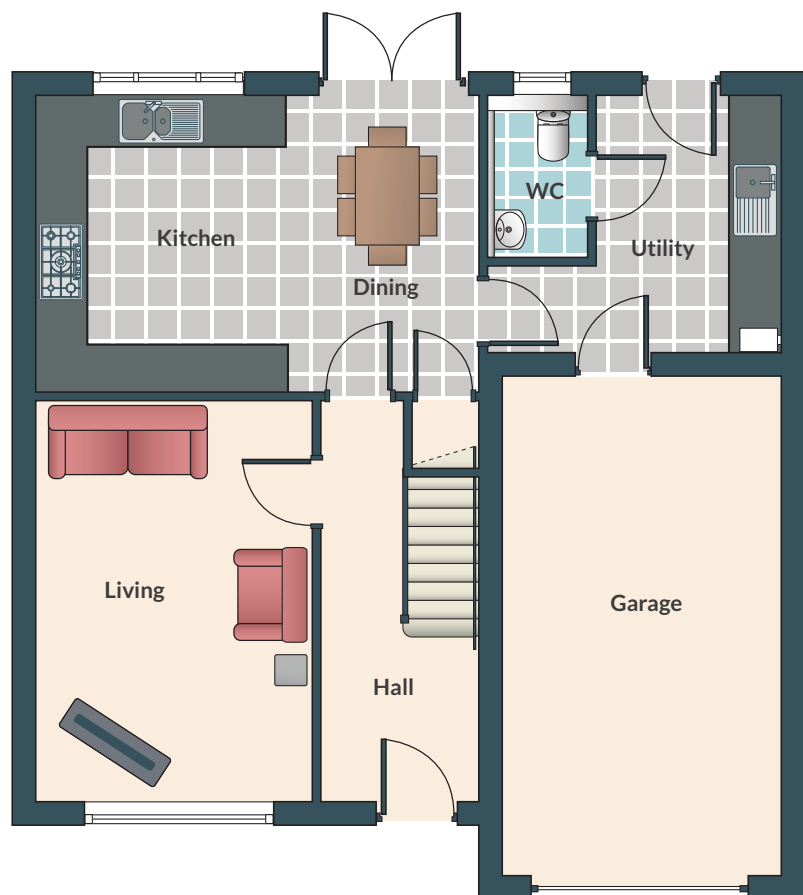
The kitchen incorporates designer kitchen furniture with a range of integrated appliances including oven, microwave, stylish gas hob with stainless chimney hood, integrated fridge/freezer and dishwasher as standard. The kitchen is enhanced with a separate utility and downstairs WC.

On the first floor The Wycombe has four generously proportioned bedrooms with a family bathroom including a separate bath and shower, the master bedroom also includes an en-suite fitted with contemporary suites and tiles making The Wycombe the perfect family home for modern day living.





# The Wycombe | Floor Plan



Living	4680mm x 3390mm	15'4" x 11'1"
Kitchen / Dining	5320mm x 3320mm	17'5" x 10'11"
Utility	1760mm x 1750mm	5'9" x 5'9"
Bathroom	2570mm x 2190mm	8'5" x 7'2"

Bedroom 1	3830mm x 3630mm	12'6" x 11'11"
En suite	1480mm x 1740mm 4'	10" x 5' 9"
Bedroom 2	3720mm x 3550mm	12'2" x 11'8"
Bedroom 3	3540mm x 2350mm	11'7" x 7'9"



To make an appointment with our sales representative:  
Tel: 01246 57 57 44 • Email: [sales@woodallhomes.co.uk](mailto:sales@woodallhomes.co.uk)

[www.woodallhomes.co.uk](http://www.woodallhomes.co.uk)



Please Note: Wall and roof finishes vary, refer to finishes schedule. Handing may vary and some plots have detached single garage. Refer to site plan and finishes schedule.  
All images are for illustrative purposes and should be treated as guidance only. Room sizes and window positions may vary per plot.