

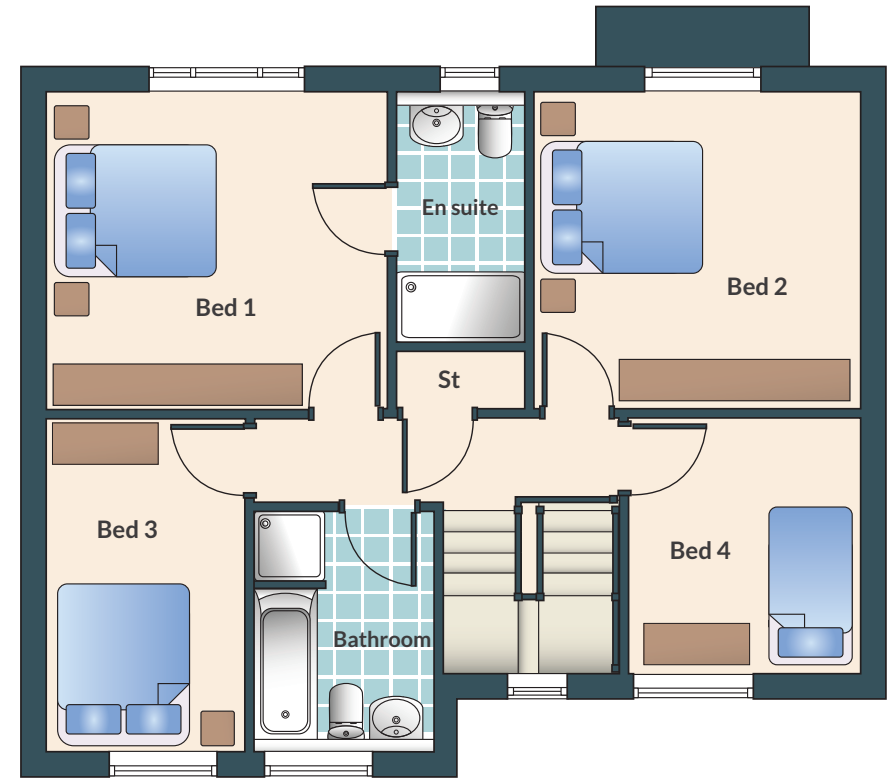
The Lindisfarne | 4 Bedroomed House



Offering uncompromising quality, you get a real sense of space and elegance as you enter the light and airy hallway of this superior, detached four-bedroom home. The ground floor boasts a large living room with a bay window and stunning open plan kitchen, dining, living area with French doors leading to a beautiful landscaped garden and garage. The kitchen incorporates designer kitchen furniture with a range of integrated appliances including single oven, microwave, stylish gas hob with stainless chimney hood, integrated fridge/freezer and dishwasher. The kitchen also features a large central island/breakfast area perfect for modern family living. The spacious living theme continues with four good-sized bedrooms and a family bathroom. The master bedroom incorporates an en-suite bathroom fitted with a contemporary suite and luxurious tiles, setting the Lindisfarne apart from the rest.



The Lindisfarne | Floor Plan



Living	5002mm (Min) x 3562mm (Min) 4237mm (Max) 6'4 (Min) 18'7" (Max) x 11'8 (Min) 13'10" (Max)	
Kitchen / Dining	7552mm x 4402mm (Max) 2447mm (Min) 24'9" x 14'5" (Max) 8'0 (Min)	
Utility	1970mm x 1632mm	6'5" x 5'4"
WC	2120mm x 960mm	6'11" x 3'1"
Bedroom 1	3880mm x 3622mm	12'8" x 11'10"

En-Suite	2760mm x 1482mm	9'0 x 4'10"
Bedroom 2	3750mm x 3622mm	12'3" x 11'10"
Bedroom 3	3809mm x 2247mm	12'5" x 7'4"
Bedroom 4	2910mm x 2663mm	9'6" x 8'8"
Bathroom	2710mm x 2035mm	8'10" x 6'8"



To make an appointment with our sales representative:
Tel: 01246 57 57 44 • Email: sales@woodallhomes.co.uk

www.woodallhomes.co.uk



Please Note: Wall and roof finishes vary, refer to finishes schedule. Handing may vary and some plots have detached single garage. Refer to site plan and finishes schedule. All images are for illustrative purposes and should be treated as guidance only. Room sizes and window positions may vary per plot.