



BUTLER & STAG

Jubilee Street | London

| E1

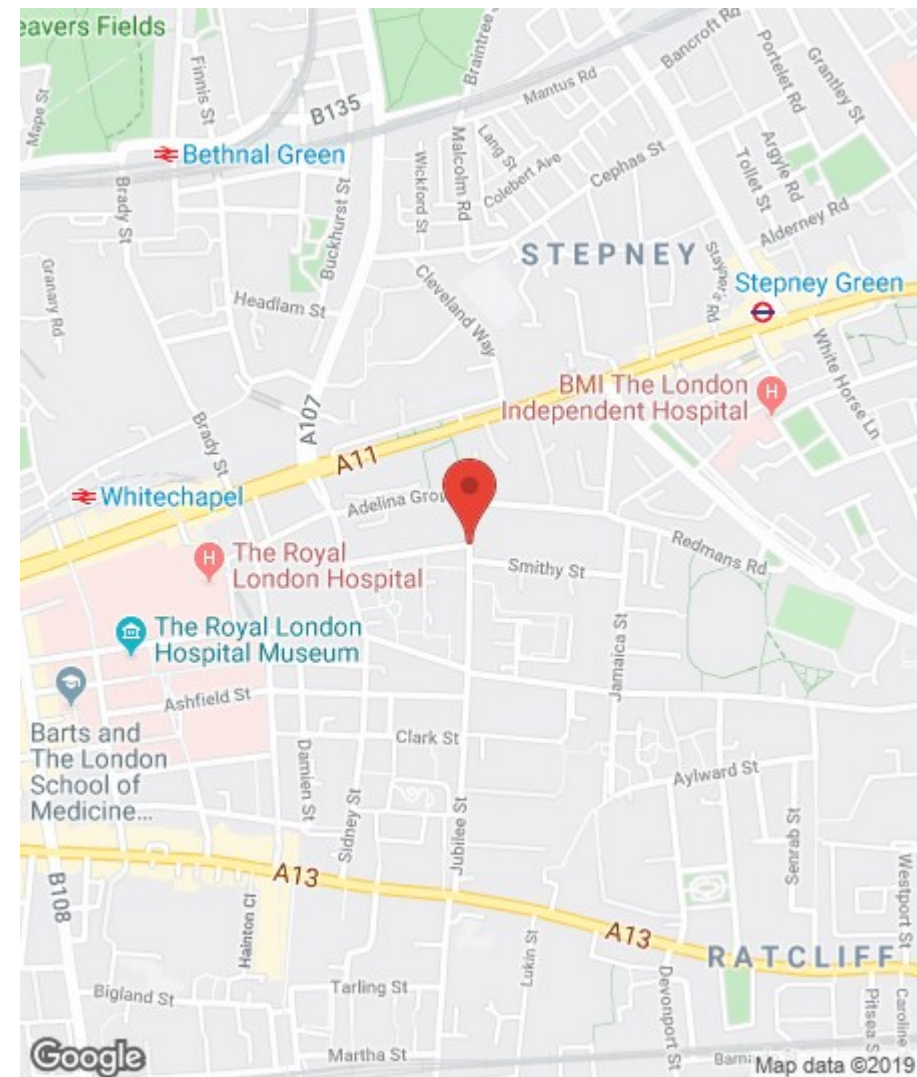
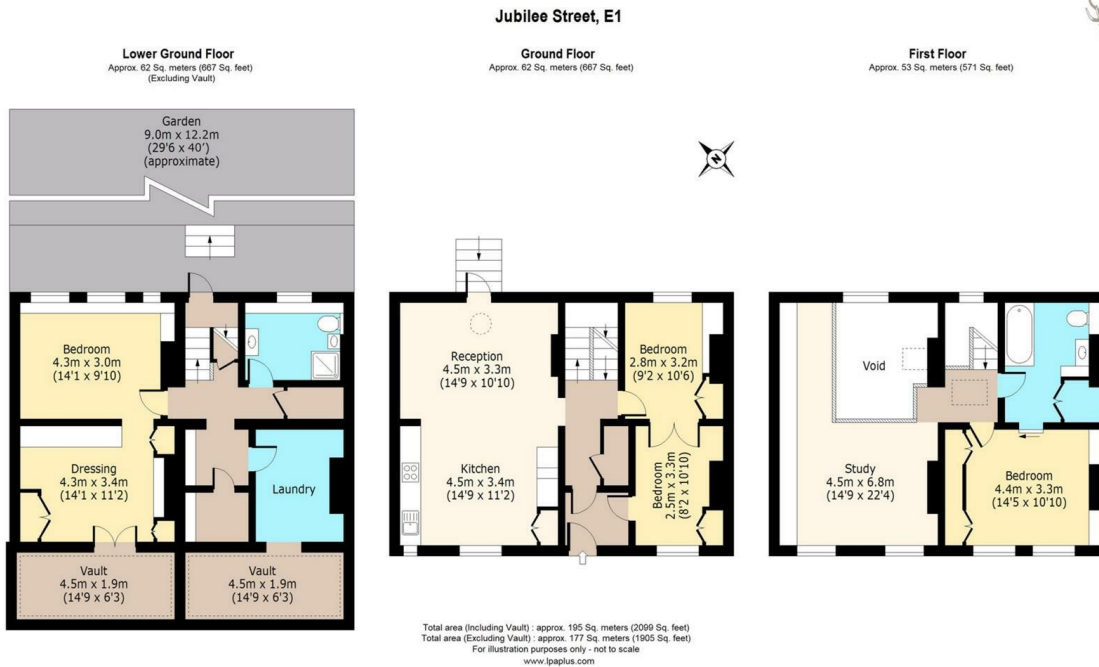
A grade two listed house, formerly two Georgian houses before they were combined by the current owners to become one home.

- *Grade Two Listed • Formerly Two Georgian Houses • Wonderful High Ceilings • Bright & Spacious • Double Width Garden • Excellent Central Location*

Asking Price £1,500,000 | Freehold







BUTLER & STAG

508 Roman Road, Bow, London, E3 5LU | 020 8102 1236 |

bow@butlerandstag.com | www.butlerandstag.uk

Important Notice - These particulars have been prepared in good faith and they are not intended to constitute part of an offer or contract. We have not performed a structural survey on this property and the services, appliances and specific fittings have not been tested. All photographs, measurements, floor plans and distances referred to are given as a guide and should not be relied upon.

Energy Efficiency Rating		
	Current	Potential
Very energy efficient - lower running costs		
(92 plus) A		
(81-91) B		
(69-80) C		
(55-68) D		
(39-54) E		
(21-38) F		
(1-20) G	1	1
Not energy efficient - higher running costs		
England & Wales	EU Directive 2002/91/EC	

Environmental Impact (CO ₂) Rating		
	Current	Potential
Very environmentally friendly - lower CO ₂ emissions		
(92 plus) A		
(81-91) B		
(69-80) C		
(55-68) D		
(39-54) E		
(21-38) F		
(1-20) G	1	1
Not environmentally friendly - higher CO ₂ emissions		
England & Wales	EU Directive 2002/91/EC	