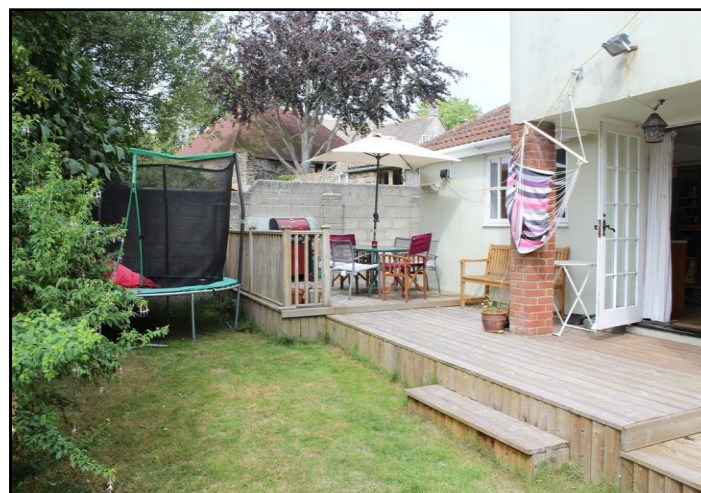
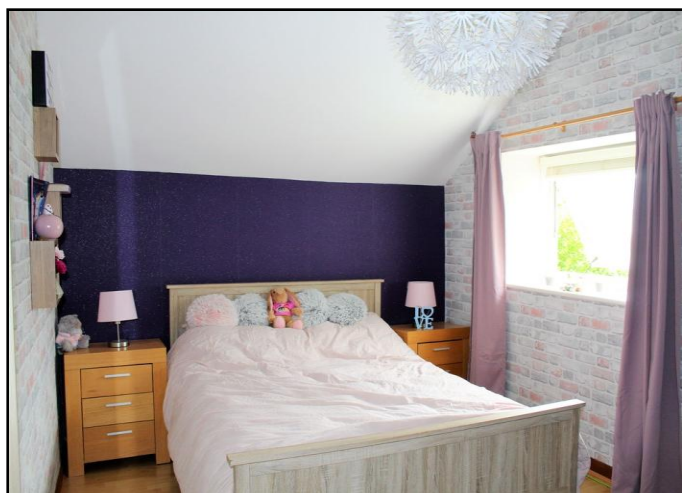
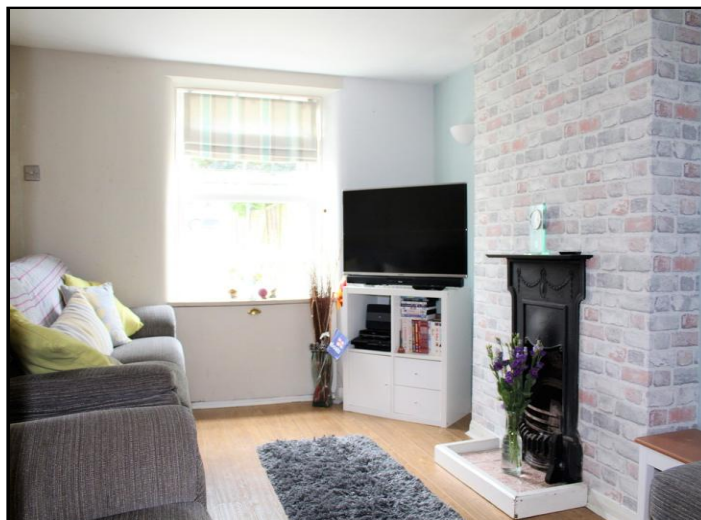


# LETTERBOX COTTAGE



## £375,000



## Letter Box Cottage, 615 Dorchester Road, Weymouth, DT3 5BX

Letter Box Cottage situated off of Dorchester Road is a very spacious semi detached family home. Comprising of lounge, sitting room, dining room, kitchen, utility room, shower room, five bedrooms and bathroom. Outside there is parking for several vehicles, a garage and an enclosed rear garden. A property that must be viewed.

FRONT ASPECT DOUBLE GLAZED DOOR:

ENTRANCE HALL: Wall mounted radiator, stairs to 1st floor, under stairs storage, door to;

SITTING ROOM: 11' 8" x 11' 3" (3.56m x 3.43m) Front aspect window, wall mounted radiator, feature fireplace and surround, television point.

KITCHEN: 22' 6" x 5' 10" (6.86m x 1.78m) L-shaped, rear aspect double doors, rear and side aspect windows, two wall mounted radiator, tiled floor, base units with work surfaces over, 1 1/2 inset sink and drainer, built in hob, eye level oven, door to;

UTILITY ROOM: 9' 1" x 7' 7" (2.77m x 2.31m) Front aspect door, rear aspect door, front aspect window, wall and base units with work surface over, wall mounted radiator, wall mounted boiler, tiled floor, loft hatch, door to;

SHOWER ROOM: Front aspect obscure window, tiled floor, wall mounted radiator, low level wc, wash hand basin, shower cubicle with glass sliding door.

DINING ROOM: 10' 0" x 9' 7" (3.05m x 2.92m) Rear aspect double doors, wall mounted radiator, opening to;

LOUNGE: 11' 6" x 9' 7" (3.51m x 2.92m) Front aspect window, wall mounted radiator, television point, feature fireplace.

1ST FLOOR LANDING: Wall mounted radiator, stairs to 2nd floor, airing cupboard, doors to all rooms.

BEDROOM: 11' 7" x 9' 8" (3.53m x 2.95m) Front aspect double glazed window, wall mounted radiator.

BEDROOM: 11' 8" x 11' 3" (3.56m x 3.43m) Front aspect double glazed window, wall mounted radiator.

BEDROOM: 14' 6" x 9' 6" (4.42m x 2.9m) Rear aspect double glazed window, wall mounted radiator.

BATHROOM: Rear aspect double glazed obscure window, tiled floor, panel bath, wash hand basin, low level wc, wall mounted radiator.

2ND FLOOR LANDING: Velux window, wall mounted radiator, doors to;

BEDROOM: 11' 9" x 11' 2" (3.58m x 3.4m) Front aspect double glazed window, two side aspect double glazed windows, wall mounted radiator, sloping ceilings.

BEDROOM 11' 10" x 9' 6" (3.61m x 2.9m) Front aspect double glazed window, wall mounted radiator, sloping ceilings.

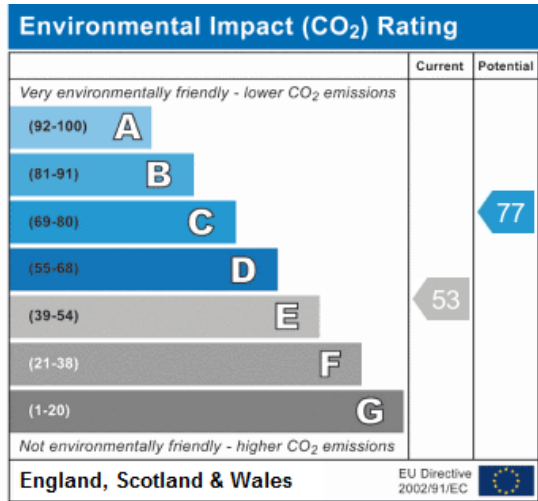
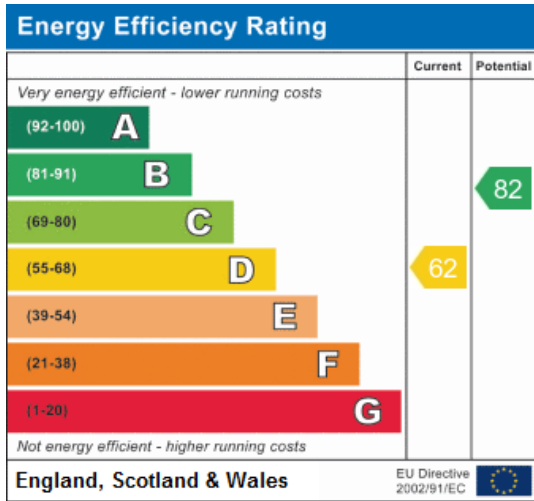
OUTSIDE FRONT: Parking for several cars, path to front door, lawn, patio, borders.

OUTSIDE REAR Fully enclosed, decking, lawn.

GARAGE: Wooden double doors, power and light.



Whilst every attempt has been made to ensure the accuracy of the floorplan contained here, measurements of doors, windows, rooms and any other items are approximate and no responsibility is taken for any error, omission or mis-statement. This plan is for illustrative purposes only and should be used as such by any prospective purchaser. The services, systems and appliances shown have not been tested and no guarantee as to their operability or efficiency can be given.  
Made with Metropix ©2019



**N.B.** All measurements quoted are approximate & for guidance only. No appliances, systems or fittings have been tested and no guarantee as to their condition or suitability is given or implied. Photographs are reproduced for general information. It cannot be inferred that any item is included. Misdescriptions Act 1991.