

ON HOLD



Weavers Close, Lytham St Annes

4 Bedrooms, 2 Bathroom, End Terraced House

£1,050 pcm

Weavers Close, Lytham St Annes

4 Bedrooms, 2 Bathroom

£1,050 pcm

Date available: Available Now

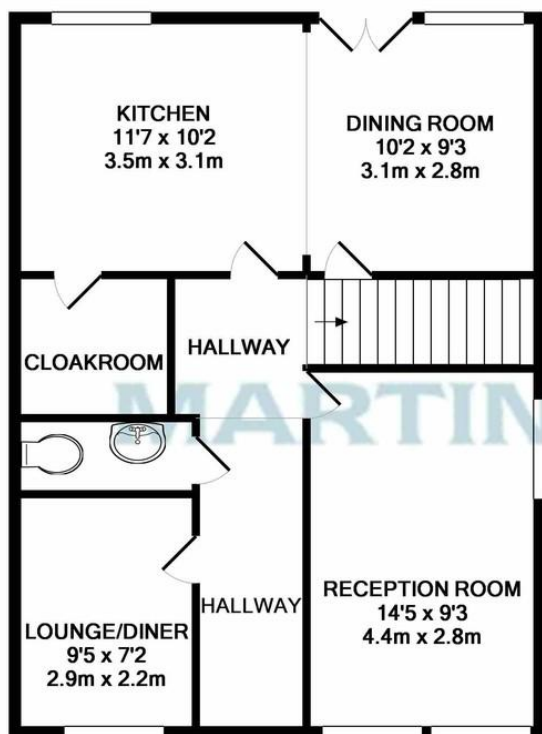
Deposit: £1,050

Unfurnished

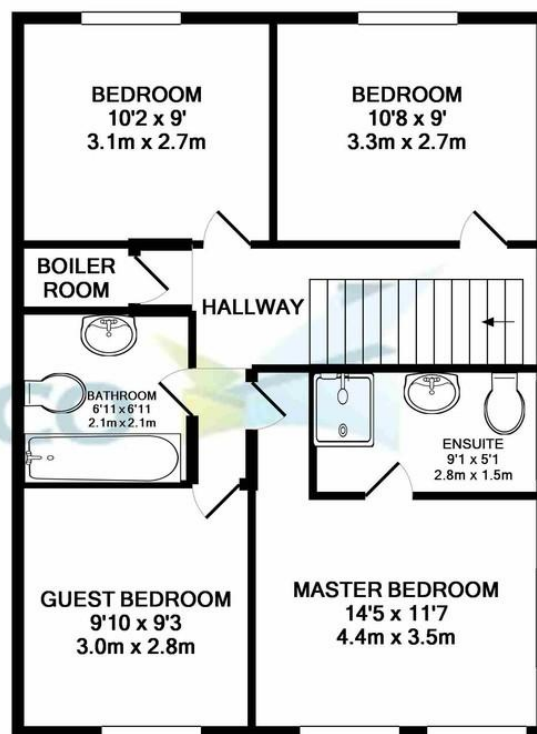
Council Tax band: E

- Four Bedroom Town House
- Three Reception Rooms
- Three Bathrooms
- One Of Which Is En-Suite
- Large Kitchen Diner
- Sought After Location
- Off Road Parking To Front

%epcGraph_c_1_441%



GROUND FLOOR
APPROX. FLOOR
AREA 591 SQ.FT.
(54.9 SQ.M.)



1ST FLOOR
APPROX. FLOOR
AREA 574 SQ.FT.
(53.3 SQ.M.)

TOTAL APPROX. FLOOR AREA 1164 SQ.FT. (108.2 SQ.M.)

Whilst every attempt has been made to ensure the accuracy of the floor plan contained here, measurements of doors, windows, rooms and any other items are approximate and no responsibility is taken for any error, omission, or mis-statement. This plan is for illustrative purposes only and should be used as such by any prospective purchaser. The services, systems and appliances shown have not been tested and no guarantee as to their operability or efficiency can be given
Made with Metropix ©2019

Martin & Co Blackpool

119 Highfield Road • • Blackpool • FY4 2JE
T: 01253 708911 • E: blackpool@martinco.com

01253 708911

<http://www.martinco.com>



Accuracy: References to the Tenure of a Property are based on information supplied by the Seller. The Agent has not had sight of the title documents. A Buyer is advised to obtain verification from their Solicitor. Items shown in photographs including but not limited to carpets, fixtures and fittings are not included unless specifically mentioned within the sales particulars. They may however be available by separate negotiation. Buyers must check the availability of any property and make an appointment to view before embarking on any journey to see a property. No person in the employment of the agent has any authority to make any representation about the property, and accordingly any information given is entirely without responsibility on the part of the agents, sellers(s) or lessors(s). Any property particulars are not an offer or contract, nor for part of one. **Sonic / laser Tape:** Measurements taken using a sonic / laser tape measure may be subject to a small margin of error. **All Measurements:** All Measurements are Approximate. **Services Not tested:** The Agent has not tested any apparatus, equipment, fixtures and fittings or services and so cannot verify that they are in working order or fit for the purpose. A Buyer is advised to obtain verification from their Solicitor or Surveyor. **Mortgage & Financial Advice:** The Martin & Co mortgage service is provided by London & Country Mortgages the UK's largest Independent Fee-Free mortgage broker of Beazer House, Lower Bristol Road, Bath, BA2 3BA. Authorised and regulated by the Financial Conduct Authority. Their FCA number is 143002. **YOUR HOME IS AT RISK IF YOU DO NOT KEEP UP REPAYMENTS ON A MORTGAGE OR OTHER LOANS SECURED ON IT.** Full written quotation available on request. A suitable life policy may be required. Loans subject to status. Minimum age 18. If you are making a cash offer, we shall require written confirmation of the source and availability of your funds in order that our client may make an informed decision

