

tavistockbow

For Rent



People Make Places



Harlequin Court, Covent Garden, WC2

2 bedrooms | 904 sq ft

£875 pw





Situated on the first floor (with mezzanine level below) of this modern portered block behind a handsome period façade, adjacent to Covent Garden's world famous piazza, this well proportioned lateral apartment features a bright open plan living space, private balcony, two double bedrooms and two bathrooms. Available from mid February on fully furnished basis

What you need to know

- Two double bedrooms
- Two bathrooms (one en-suite)
- Lovely open plan kitchen/reception room
- Private balcony
- Concierge
- 1st floor (with lift)
- Contemporary furnishing
- Overlooking communal water garden
- Located just off Covent Garden's Piazza
- Close to both Covent Garden & Leicester Square stations





Overview

Situated on the first floor (with mezzanine level below) of this modern portered block behind a handsome period facade adjacent to Covent Garden's world famous piazza, this well proportioned lateral apartment features a bright open plan living space, private balcony, two double bedrooms and two bathrooms.

Enviably located on the corner of Tavistock Street & Exeter Street in the heart of London's West End, Harlequin Court is arranged around a beautiful Japanese style communal garden and one of Covent Garden's most sought after buildings, striking a great balance between a quiet position and having the Piazza and all the other attractions of the West End literally on the doorstep.

Available from mid February on a fully furnished basis.





WHAT WE LOVE:

- Private balcony
- Master bedroom with walk-in wardrobe
- Tranquil Japanese style communal garden
- Covent Garden Piazza on the doorstep
- Henrietta Street's fantastic restaurants nearby.

WHAT YOU NEED TO KNOW:

- 1st floor with lift (mezzanine level below)
- Contemporary furnishing
- Located to the quiet rear of the building
- Available mid February
- Moments from The Piazza & Strand.



People Make Places

London is collection of inspiring urban villages and one of the most exciting places in the world to live, work & play.

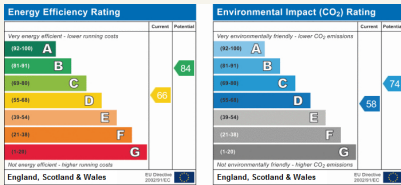
We work with both property owners and their occupiers, sharing the story of these vibrant neighbourhoods, conveying the unique soul & energy to future custodians, the people who'll keep them buzzing.

And unlike many real estate businesses we're not just about buildings, because streets & buildings don't make a neighbourhood.

We're about building relationships, because **people make places**.

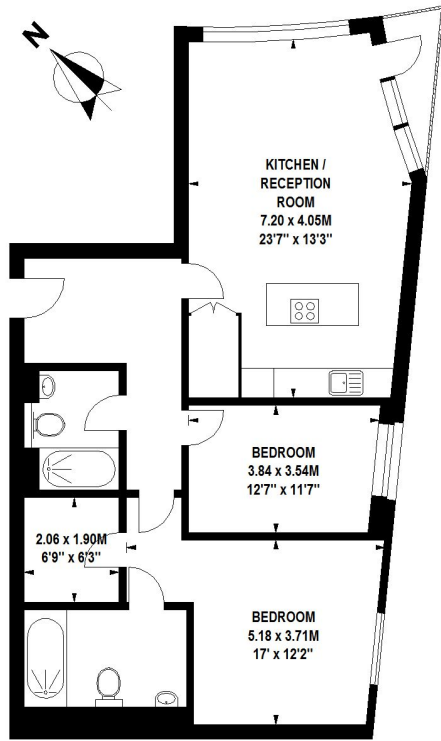
MISINTERPRETATION ACT [COPYRIGHT] DISCLAIMER: Tavistock Bow Ltd for themselves and for the vendor(s) of this property whose agents they are, given notice that: 1. These particulars do not constitute, not constitute any part of, an offer or contract. 2. None of the statements contained in these particulars as to the property are to be relied on as statements or representations of fact. 3. Any intending purchaser or lessee must satisfy themselves by inspection or otherwise as to the correctness of each of the statements contained in these particulars. 4. The vendor(s) or lessor(s) do not make or give and neither Tavistock Bow Ltd nor any person in their employment has any authority to make or give any representation or warranty whatever in relation to this property. Finance Act 1989, Unless otherwise stated all prices and rents are quote exclusive of VAT. Property Misrepresentation Act 1991; These details are believed to be correct at the time of compilation but may be subject to subsequent amendment.

Follow us:     @tavistockbow



Harlequin Court, WC2

Approximate Gross Internal Area 84 sq m / 904 sq ft



First Floor

Floor Plan produced for Tavistock Bow by Mays Floorplans © . Tel 020 3397 4584
 Illustration for identification purposes only, not to scale
 All measurements are maximum, and include wardrobes and window bays where applicable

tavistockbow

21 New Row, Covent Garden,
 London, WC2N 4LE

t: 020 7477 2177
 e: hello@tavistockbow.com
 w: tavistockbow.com



Harlequin Court, Covent Garden WC2