

TREETOPS

COMPTON AVENUE - LONDON - N6



Abutting Highgate Golf Course, Compton Avenue is a private gated road with 24 hour security guards.

The property is set opposite Kenwood House & Hampstead Heath whilst being equidistant to Hampstead & Highgate Villages.

Treetops is a superb newly constructed 10 bedroom residence finished and designed to an exemplary and meticulous standard throughout.



TRETTORS

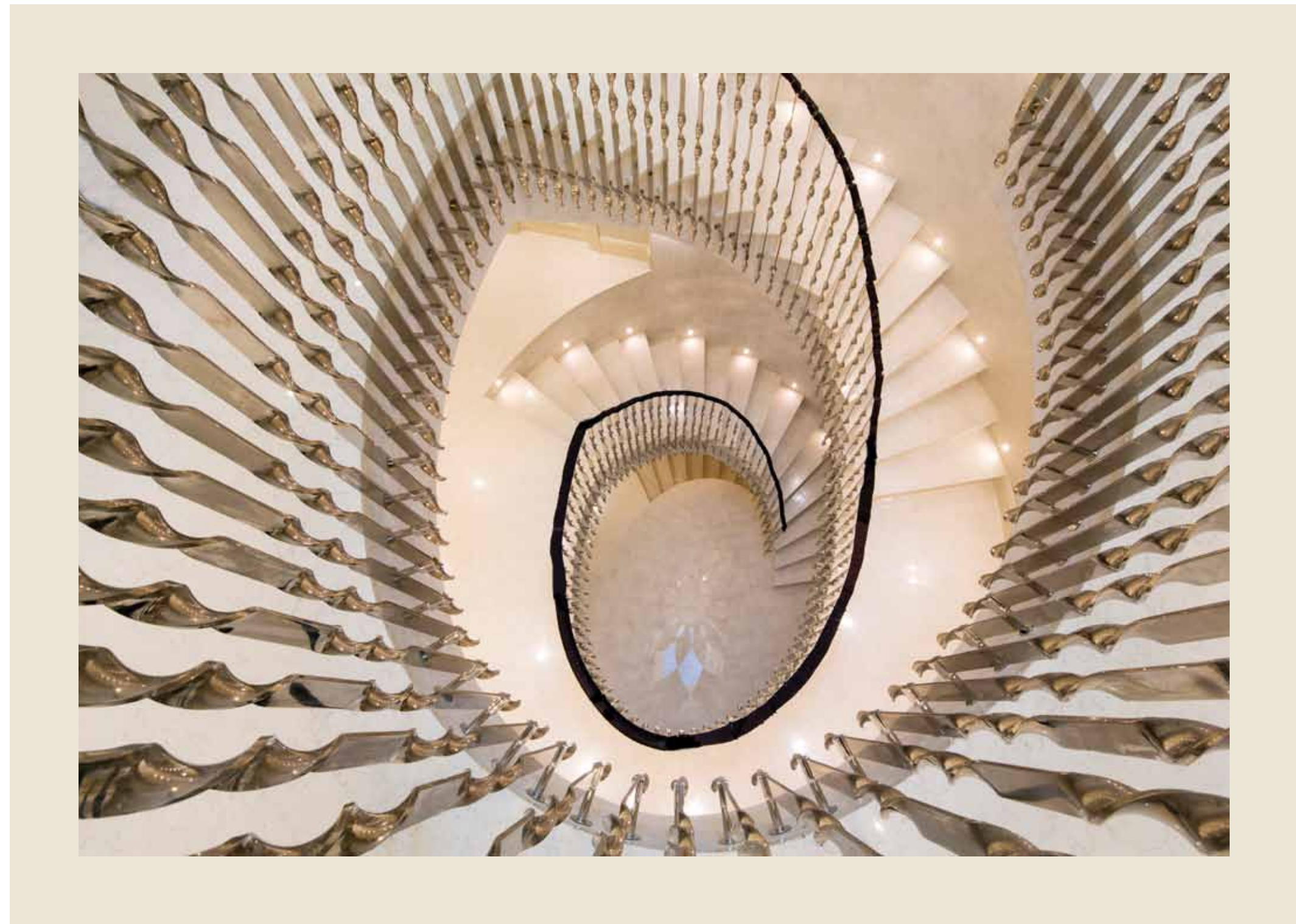






Accommodation and Amenities

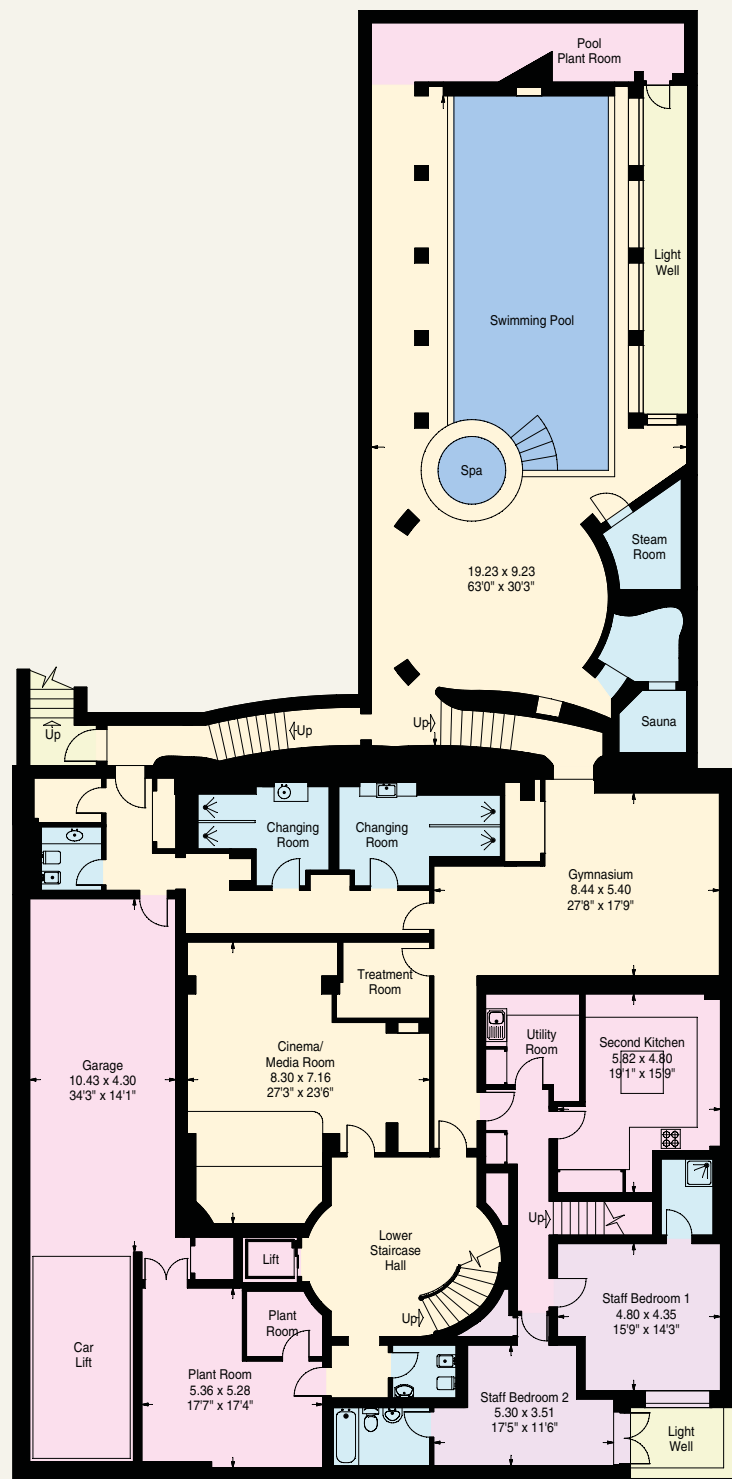
- ❖ The finished house extends to 1,492 sq m (16,064 sq ft) on a 0.5 acre plot
 - ❖ Indoor and outdoor swimming pools
 - ❖ Jacuzzi
 - ❖ Elevator to all floors
 - ❖ Principal rooms furnished
 - ❖ Steam room and a sauna with a cold water plunge pool
- ❖ Garage with a car lift to a second lower garage providing parking for 4 cars
 - ❖ Cinema room
 - ❖ Gymnasium with 2 changing rooms
 - ❖ 4 guest WC's
- ❖ Industrial kitchen and large utility room
 - ❖ Landscaped front & rear gardens
 - ❖ Off street parking
 - ❖ 2 bedroom staff apartment
- ❖ Private road with guard operated security gate







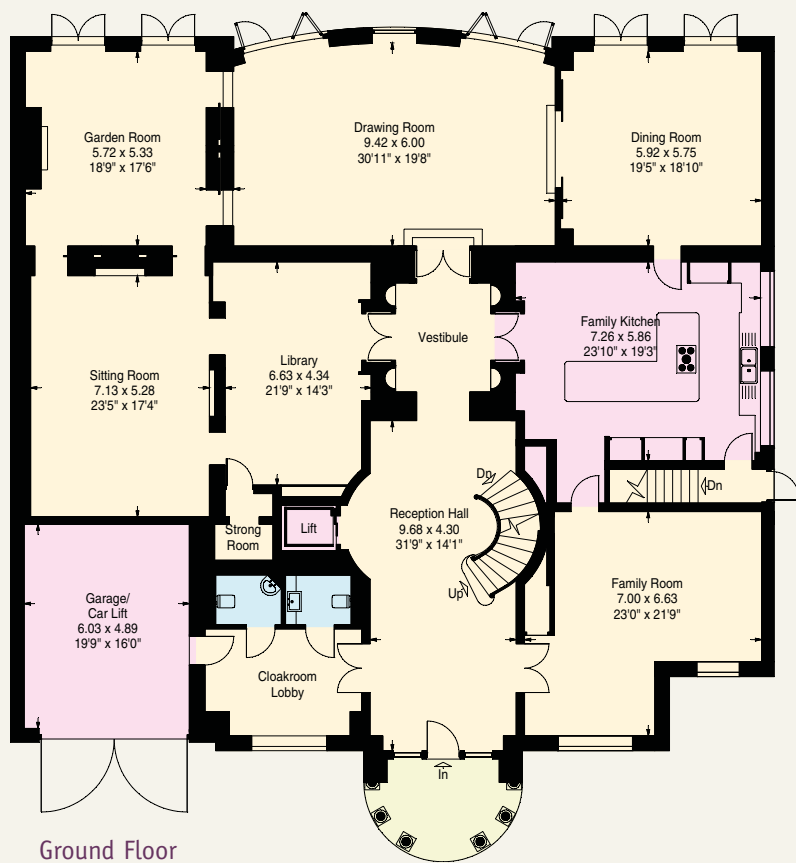




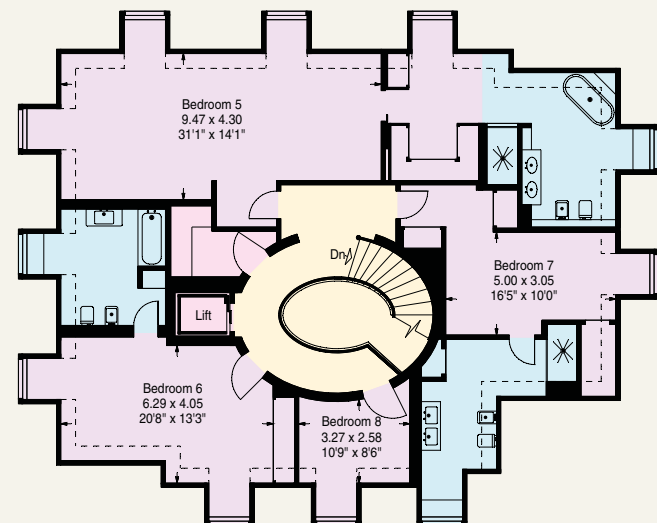
Garden Floor / Leisure



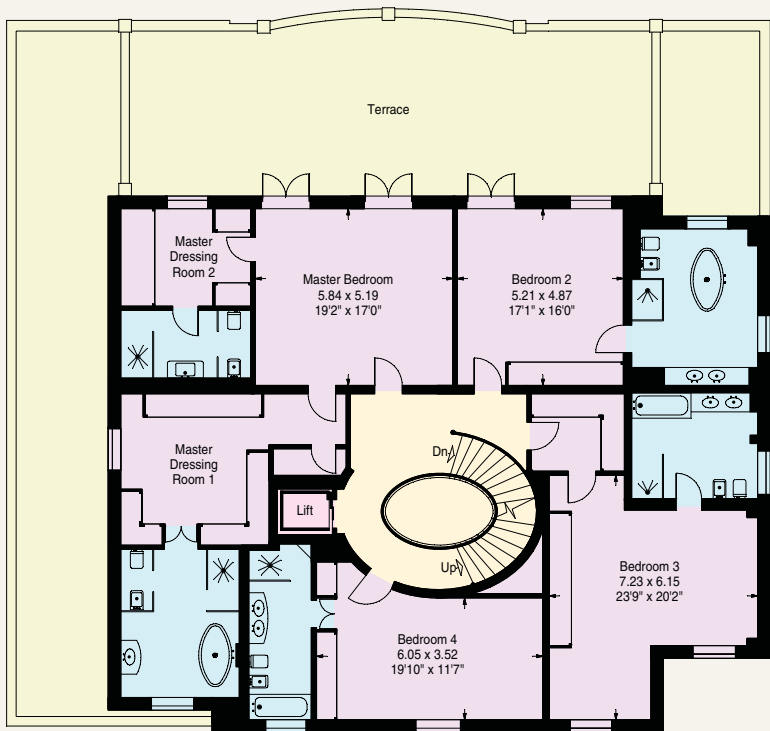
Approximate Gross Internal Area
(Not Including Reduced Height Area, Below 1.5m - Denoted with Dashed Line)
1,492 Square Metres - 16,064 Square Feet



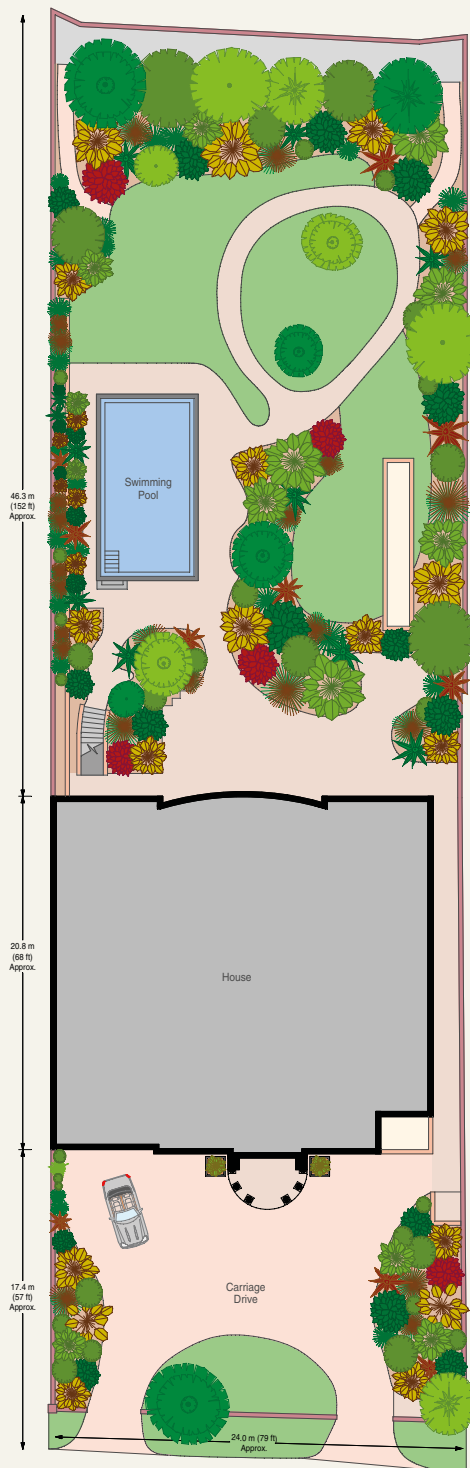
Ground Floor



Second Floor



First Floor



Site Plan





Joint Sole Agents



Knight Frank
Hampstead
020 7431 8686
KnightFrank.co.uk

glentree
INTERNATIONAL
020 8458 7311
www.glentree.com

These plans are for guidance only and must not be relied upon as a statement of fact. Attention is drawn to the Important Notice.

Important Notice
1. Particulars: These particulars are not an offer or contract, nor part of one. You should not rely on statements by Knight Frank LLP in the particulars or by word of mouth or in writing ("information") as being factually accurate about the property, its condition or its value. Neither Knight Frank LLP nor any joint agent has any authority to make any representations about the property, and accordingly any information given is entirely without responsibility on the part of the agents, seller(s) or lessor(s). 2. Photos etc: The photographs show only certain parts of the property as they appeared at the time they were taken. Areas, measurements and distances given are approximate only. 3. Regulations etc: Any reference to alterations to, or use of, any part of the property does not mean that any necessary planning, building regulations or other consent has been obtained. A buyer or lessee must find out by inspection or in other ways that these matters have been properly dealt with and that all information is correct. 4. VAT: The VAT position relating to the property may change without notice.

Knight Frank LLP is a limited liability partnership registered in England with registered number OC305934. Our registered office is 55 Baker Street, London, W1U 8AN, where you may look at a list of members' names.



