



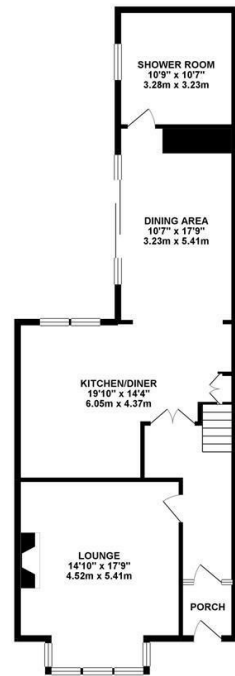
Well-presented with an abundance of period features! A delightful Victorian terrace ideally located on Sanderson Road within Jesmond, a stone's throw from excellent local schools, countless great shops and restaurants, West Jesmond Metro station and indeed Newcastle City Centre itself.

Purpose built over three storeys and offering in excess of 2,200 sq ft, the accommodation briefly comprises entrance lobby, entrance hall, lounge with ornate cornice and period fireplace, open plan kitchen and dining room and shower room to the ground floor. The first floor boasts an impressive full-width master bedroom with walk-in bay, ornate cornice and marble fireplace, second and third bedrooms both with period fireplaces, a stylish family bathroom and separate shower room, both with travertine marble tiling. To the second floor a further two double bedrooms. Externally, a pleasant town garden to the front and a generous courtyard garden to the rear, block paved with west facing aspect and timber gates providing off-street parking. An internal inspection is essential to appreciate this wonderful period, family home!

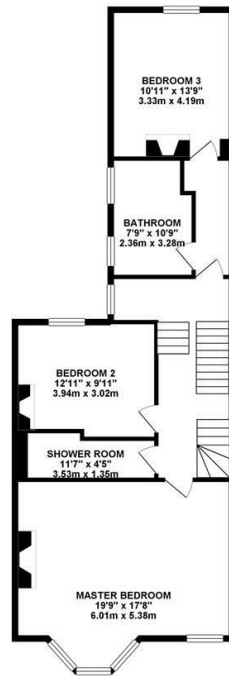
Victorian Terrace | Three Storeys | 2,241 sq ft (208.2m2) | Lounge | Open Plan Kitchen & Dining Room | Impressive Full-Width Master Bedroom | Five Double Bedrooms | Bathroom & Two Shower Rooms | West Facing Courtyard with Off Street Parking | Period Features | Central Location | EPC Rating: tbc



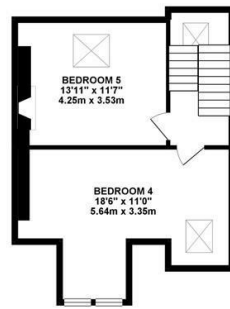
GROUND FLOOR 893.82 sq. ft.
(83.04 sq. m.)



1ST FLOOR 896.24 sq. ft.
(83.26 sq. m.)



2ND FLOOR 451.34 sq. ft.
(41.93 sq. m.)



TOTAL FLOOR AREA : 2241.40 sq. ft. (208.23 sq. m.) approx.

Whilst every attempt has been made to ensure the accuracy of the floorplan contained here, measurements of doors, windows, rooms and any other items are approximate and no responsibility is taken for any error, omission or misstatement. This plan is for illustrative purposes only and should be used as such by any prospective purchaser. The services, systems and appliances shown have not been tested and no guarantee as to their operability or efficiency can be given.
Made with Metropix ©2019



Offers Over £625,000

IMPORTANT NOTE: These particulars and the descriptions and measurements herein do not constitute representation and whilst every effort has been made to ensure accuracy, this cannot be guaranteed.

