

# Southbourne Road

Bournemouth, BH6 5AQ





# Southbourne Road

Bournemouth, BH6 5AQ

Price: £185,000

Location, Location, Location. Set in the heart of Southbourne and just a stones throw away from the highly popular bars shops and restaurants of Southbourne grove is this top floor two bedroom flat in immaculate condition with off street parking loft space and well maintained block.

## DESCRIPTION

Location, Location, Location. Set in the heart of Southbourne and just a stones throw away from the highly popular bars shops and restaurants of Southbourne grove is this top floor two bedroom flat in immaculate condition with off street parking, loft space, situated in a well maintained block.

Originally bought as a buy to let this two bedroom flat can now be yours to own. The property boasts an open plan kitchen/lounge area that is fully equipped with integrated appliances, including washing machine, separate fridge, separate freezer, hob and oven. The boiler has been well maintained and is in very good order.

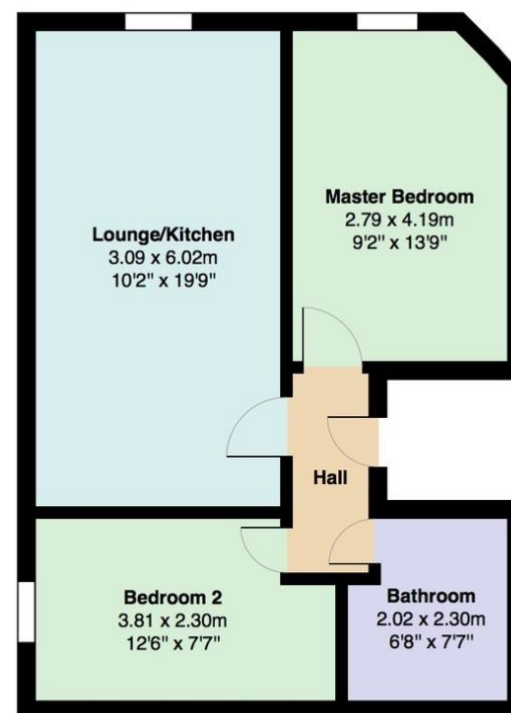
The master bedroom is of a decent size and is just waiting for someone to put their own stamp on things. It also benefits from a pull down ladder giving the new owners access to a loft space almost as big as the flat. There is no need to worry about storage here! On to the second of the two bedrooms, however, buyers can only look at all the well built iconic lego structures such as the Star Wars Airspeeder and starfighter. We can confirm they do not come with the property.

Buyers will also benefit from a very well maintained bathroom boasting a modern bathroom suite equipped with shower and heated towel rail.

## Agent notes

The property is offered Chain Free  
Property repainted 6 weeks ago - nice modern neutral colours  
Boiler recently serviced  
New carpets fitted 6 months ago  
New Blinds Installed

Council Tax Band - A  
Service charge - £1200 per annum  
Ground Rent - £200.00 per annum  
Lease length - 89 years remaining  
Pets allowed - Permission required



Total Area: 47.0 m² ... 506 ft²

All measurements are approximate and for display purposes only



