



Catcliffe Way

Lower Earley, RG6 4HX

£1,175 PCM



Available NOW

£1175.00per calendar month

Modern semi detached house in cul-de-sac location in popular Lower Earley. The property comprises of 3 bedrooms, being 2 doubles and 1 small single/office. To the ground floor is a front aspect lounge with laminate flooring giving access to dining area with doors to rear garden with patio and lawned area. Fully fitted kitchen. To the first floor are 3 bedrooms and bathroom. Gas central heating and double glazing. Garage and driveway. Furnished.

NO AGENCY FEES

for more info please see www.vanderpump.co.uk

Relevant letting and tenant protection information:

In addition to paying rent for the property, you may also be required to make the following permitted payments:

Before the tenancy starts:

Holding Deposit: 1 week's rent; and/or

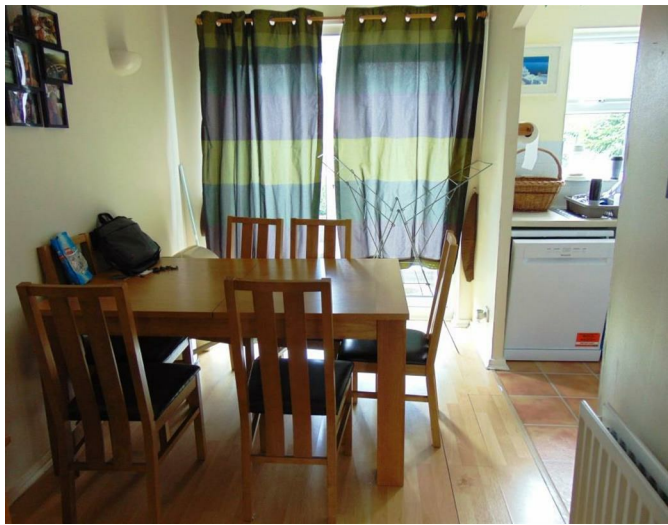
Deposit: 5 weeks rent (or in the case of rental income of more than £50,000 per annum 6 weeks rent).

During the tenancy:

Payments to other third parties: such as Council Tax, utilities or payments for communications services;

Default Charges: such as payments for the replacement of lost keys or interest on overdue rent; and

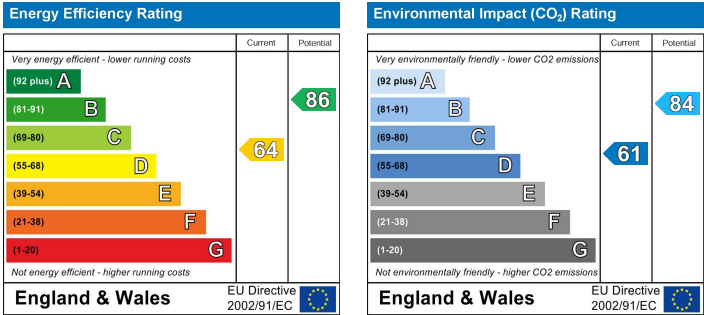
Tenancy Transaction Charges: such as requests to vary or assign the tenancy.



Area Map



Energy Efficiency Graph



These particulars, whilst believed to be accurate are set out as a general outline only for guidance and do not constitute any part of an offer or contract. Intending purchasers should not rely on them as statements of representation of fact, but must satisfy themselves by inspection or otherwise as to their accuracy. No person in this firm's employment has the authority to make or give any representation or warranty in respect of the property.