

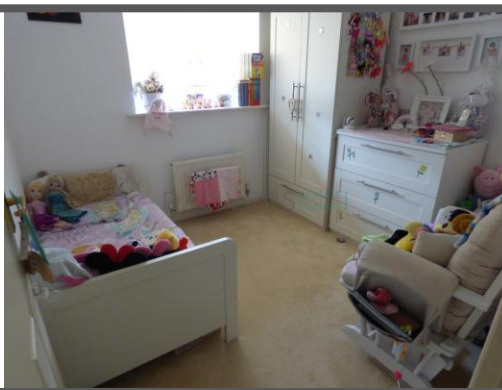


Vyner Close | Leicester | LE3 3EJ

Danvers are pleased to offer to the market this three bedroom end of terrace family house located in this very popular area of Leicester. The property is well presented and comprises entrance hall, downstairs WC, lounge, kitchen/diner, upstairs is a landing, bathroom, two double bedrooms, one with ensuite and single bedrooms. Outside the property to the front is a drive giving off road parking for multiple vehicles and a small lawned frontage. To the rear is an enclosed garden with a good size lawn, mature bushes and a good size patio area. Danvers advise early viewings to avoid disappointment.

Offers Over £190,000

- END TERRACE HOUSE
- THREE BEDROOMS
- EN-SUITE TO MASTER BEDROOM
- DRIVEWAY FOR MULTIPLE VEHICLES



Property Description

Danvers are pleased to offer to the market this three bedroom end of terrace family house located in this very popular area of Leicester. The property is well presented and comprises entrance hall, downstairs WC, lounge, kitchen/diner, upstairs is a landing, bathroom, two double bedrooms, one with ensuite and single bedrooms. Outside the property to the front is a drive giving off road parking for multiple vehicles and a small lawned frontage. To the rear is an enclosed garden with a good size lawn, mature bushes and a good size patio area. Danvers advise early viewings to avoid disappointment.

ENTRANCE HALL

With uPVC half glazed door to the front aspect, radiator, alarm and doors through to the downstairs WC and Lounge.

DOWNSTAIRS WC

With double glazed window to the front aspect, radiator, low level WC and wash hand basin.

LOUNGE

15' Max x 14' (4.57m x 4.27m) With uPVC double glazed window to the front aspect, laminate flooring, two radiators, stairs rising to the first floor landing and double doors through to the kitchen/diner.

KITCHEN/DINER

15' x 8' 7" (4.57m x 2.62m) With double glazed window to the rear aspect, wall and base units with

worktop over, tiled splash backs, sink with drainer, electric oven, gas hob with extractor over, tiled floor, radiator and space for a fridge freezer, washing machine and tumble dryer.

LANDING

Giving access to the loft, airing cupboard and doors through to the three bedrooms and bathroom.

BEDROOM ONE

11' 8" to robes x 7' 2" (3.56m x 2.18m) Double bedroom with double glazed window to the front aspect, radiator, inset ceiling spot lights, built in wardrobe and door through to the ensuite.

ENSUITE

With double glazed privacy glass window to the front aspect, double shower with electric Mira shower inside, low level WC, wash hand basin, tiled floor, tiled walls in water sensitive areas and radiator.

BEDROOM TWO

8' 5" x 7' 11" (2.57m x 2.41m) With double glazed window to the rear aspect and radiator.

BEDROOM THREE

7' 11" x 6' 6" (2.41m x 1.98m) Single bedroom with double glazed window to the rear aspect and radiator.

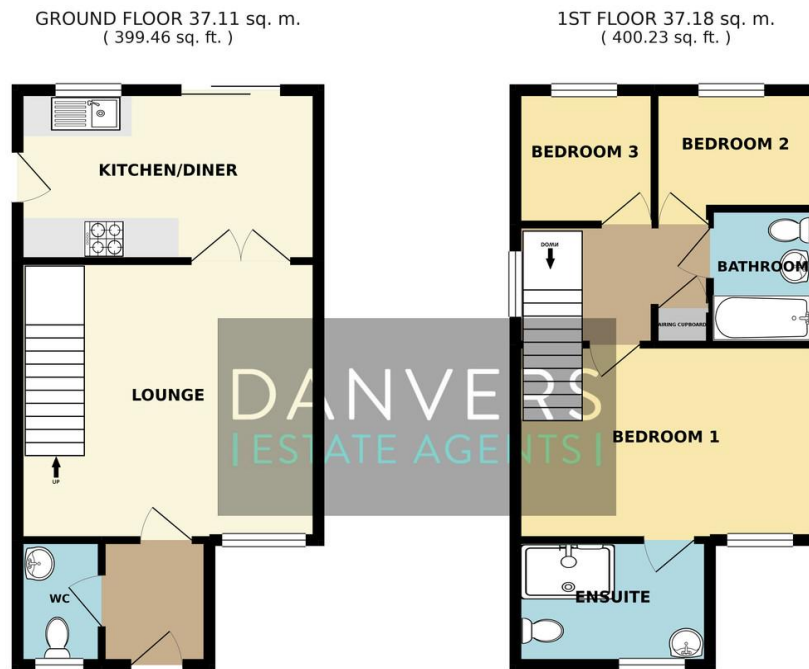
BATHROOM

Paneled bath with tiled surround, low level WC, wash hand basin, tiled floor and radiator.



Vyner Close | Thorpe Astley | Leicester | LE3 3EJ





TOTAL FLOOR AREA : 74.29 sq. m. (799.68 sq. ft.) approx.
Whilst every attempt has been made to ensure the accuracy of the floorplan contained here, measurements of doors, windows, rooms and any other items are approximate and no responsibility is taken for any error, omission or mis-statement. This plan is for illustrative purposes only and should be used as such by any prospective purchaser. The services, systems and appliances shown have not been tested and no guarantee as to their operability or efficiency can be given.
Made with Metagap ©2019

EPC - TBC

Tenure

Freehold

Council Tax Band

B

Viewing Arrangements

Strictly by appointment

Contact Details

37 Western Boulevard
Bede Island
Leicester
Leicestershire
LE2 7HN

Agents Note: Whilst every care has been taken to prepare these sales particulars, they are for guidance purposes only. All measurements are approximate and for general guidance purposes only and whilst every care has been taken to ensure their accuracy, they should not be relied upon and potential buyers are advised to recheck the measurements