



102 Park Mead, Sidcup
Kent DA15 9PF
Offers in excess of £277,000

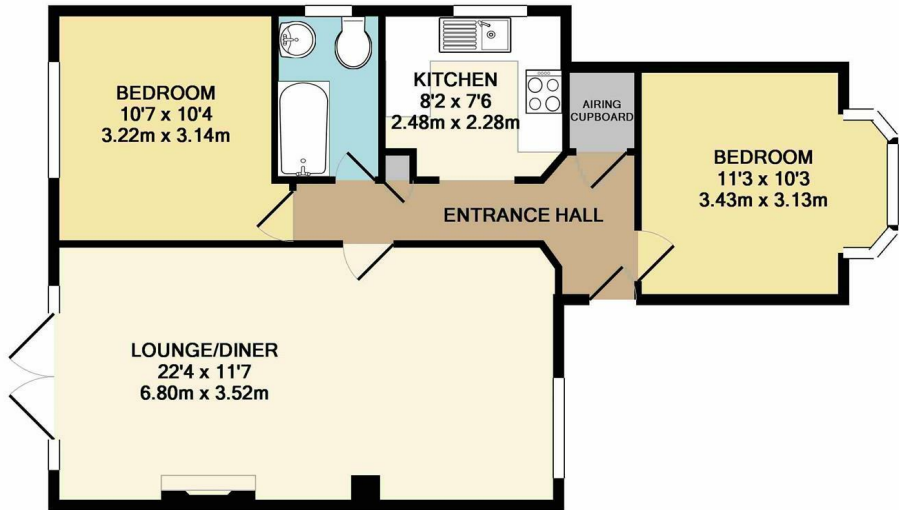
FREEHOLD - NO CHAIN - This fantastic spacious two double bedroom ground floor maisonette is available to view immediately & chain free!

Offering great space throughout, with a modern fitted kitchen & bathroom, through lounge with direct access to it's private rear garden & lovely frontage.

Centrally located in Blackfen, this property boasts a wealth of shops, cafes, restaurants & pubs, including The Co Op supermarket, Costa, Tesco Express and many more. It also offers access & efficient transport links to Sidcup, Welling, Eltham & beyond.

This property needs to be seen to be fully appreciated.
Viewing by appointment only so please call to arrange today - 020 8304 0997.





TOTAL APPROX. FLOOR AREA 628 SQ.FT. (58.4 SQ.M.)

Whilst every attempt has been made to ensure the accuracy of the floor plan contained here, measurements of doors, windows, rooms and any other items are approximate and no responsibility is taken for any error, omission, or mis-statement. This plan is for illustrative purposes only and should be used as such by any prospective purchaser. The services, systems and appliances shown have not been tested and no guarantee as to their operability or efficiency can be given
Made with Metropix ©2019

