



Daling Way, London, , E3 5NL
£425 Per Week

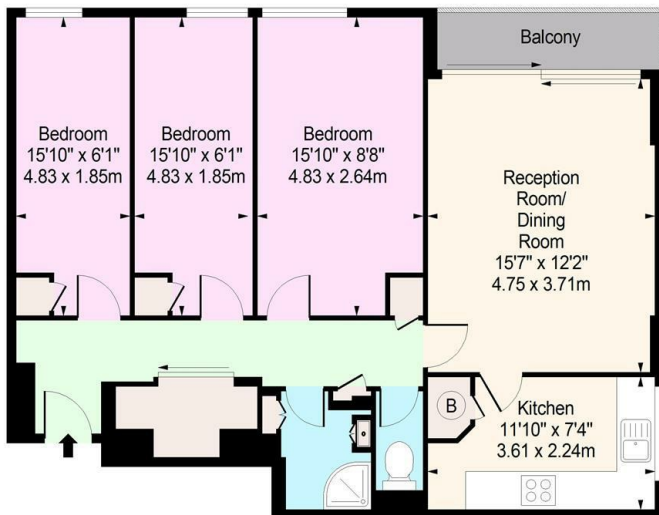
Elms Estates are please to be able to offer to the market for rent this newly refurbished three bedroom apartment situated on the 16th floor and offering stunning views across East London and beyond. The property is conveniently located next to the beautiful Victoria Park and within a short walk of Roman Road with its multiple shopping facilities. Ingram House is Available from 17th October and early viewing is highly recommended.



- Ext
- Lounge
- Kitchen
- Bedroom 1
- Bedroom 2
- bedroom 3
- Shower room



Ingram House, Daling Way, E3
 Approx. Gross Internal Area 789 Sq Ft - 73.30 Sq M



Sixteenth Floor

Floor Area 789 Sq Ft - 73.30 Sq M

For Illustration Purposes Only - Not To Scale
www.londonpropertyassessments.co.uk

Energy Efficiency Rating		Environmental Impact (CO ₂) Rating	
Current	Potential	Current	Potential
<p>Very energy efficient - lower running costs</p> <p>(92 plus) A</p> <p>(81-91) B</p> <p>(69-80) C</p> <p>(55-68) D</p> <p>(39-54) E</p> <p>(21-38) F</p> <p>(1-20) G</p> <p>Not energy efficient - higher running costs</p>			
72	80	<p>Very environmentally friendly - lower CO₂ emissions</p> <p>(92 plus) A</p> <p>(81-91) B</p> <p>(69-80) C</p> <p>(55-68) D</p> <p>(39-54) E</p> <p>(21-38) F</p> <p>(1-20) G</p> <p>Not environmentally friendly - higher CO₂ emissions</p>	
<p>England & Wales</p> <p>EU Directive 2002/91/EC</p>		<p>England & Wales</p> <p>EU Directive 2002/91/EC</p>	