



1,058
sq ft



3



1



2

REDBRIK
ESTATE AGENTS



Helping you find
your home at...

Manor Road, Brimington, Chesterfield

Guide Price £290,000 to £300,000

GUIDE PRICE OF - £290,000 - £300,000

This three bedroom Detached property is located in the popular residential area of Brimington.

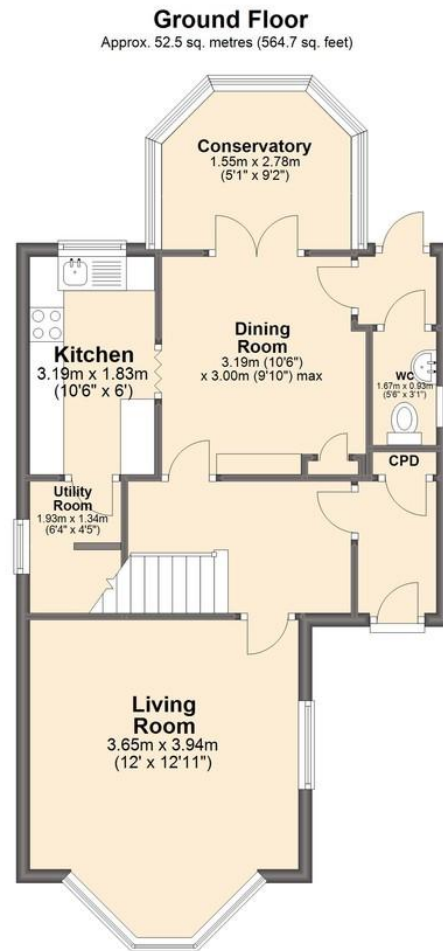
- Three Bedroom Detached Home
- Fitted Kitchen with Integrated Appliances
- Three Double Bedrooms (Master With Fitted Wardrobes)
- Conservatory
- Utility Room And Downstairs W/C
- Popular Residential Area
- Enclosed Rear Garden With Patio & Lawn Area
- Off Street Parking For Numerous Cars Including Double Garage
- No Onward Chain
- Energy Rating - TBC.

With a spacious 1058.3 sq. ft. of accommodation, this detached property comprises; an Entrance Hall leading to a Fitted Kitchen, Dining Room with double doors leading to the Conservatory, Spacious bay fronted Living room, Downstairs W/C and Utility Room. The first floor offers three Bedrooms (Master with fitted wardrobes) and Three Piece Suite Family Bathroom. To the rear of the property is Off Road Parking and a Double Garage, lawn and patio area. To the front is Off Road Parking. Located in the popular residential area of Brimington, this property is ideal for families or investors a like. Perfect for the prospective purchaser to modernise to their individual requirements. Close to local shops/amenities and transport links. Viewing essential.





We endeavour to make these particulars as accurate as possible, but they should only be used as guidance and they do not constitute any part of the contract. All measurements are approximate and no guarantees are made to the services, heating systems, appliances (if any) or fittings as to their working order and no warranty can be given or implied.



Total area: approx. 98.3 sq. metres (1058.3 sq. feet)

You may download, store and use this material for your own personal use and research. You may not republish, retransmit, redistribute or otherwise make the material available to any party or make the same available on any website, on or off line service or hard copy without the website owner's express written consent. The website owner's copyright must remain on all reproductions of material taken from this website.

