



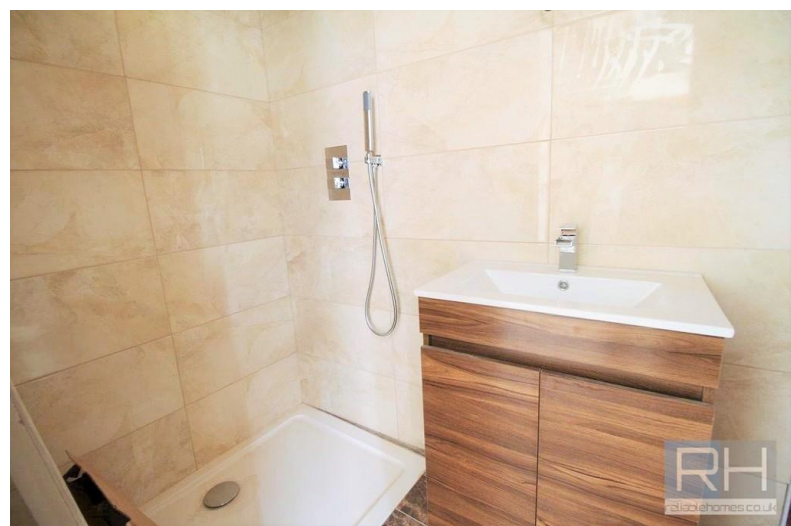
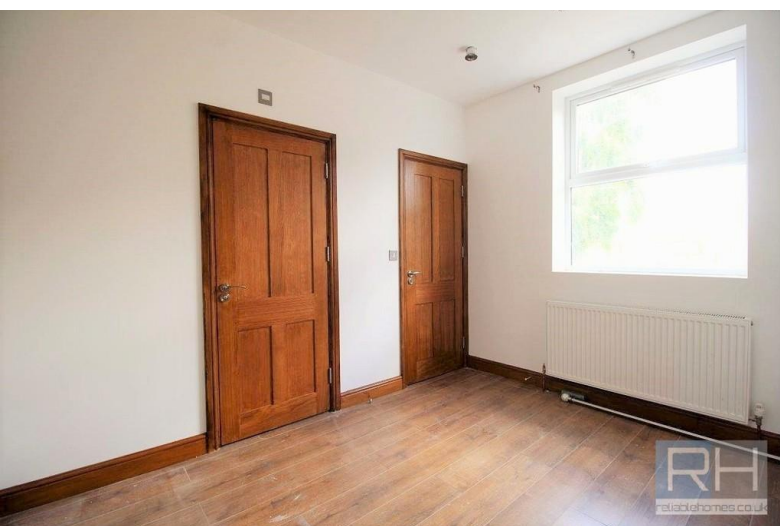
Tottenham Lane, London, N8

- Brand new apartment
- One bedroom
- High specification throughout

- Great location
- Offered unfurnished

**£1,200 pcm**

EPC Rating '76'





Reliable Homes are delighted to offer this fantastic one bedroom apartment just moments from Crouch End offering a beautiful bright internal finish with spacious reception room, open plan modern kitchen and lovely highlights of classic character. This property benefits an en suite bathroom and an extra separate WC. Offered unfurnished. Furnished option available for £50pcm.

Tottenham Lane is well served by local amenities, while the great range of shops and bars in Crouch End are moments away. Transport links include Hornsey Station (National Rail) and Turnpike Lane Underground Station (Piccadilly Line). Early viewings are highly recommended to avoid disappointment!

37A Broadway Parade  
Crouch End  
London  
N8 9DB

[www.reliablehomes.co.uk](http://www.reliablehomes.co.uk)  
[office@reliablehomes.co.uk](mailto:office@reliablehomes.co.uk)  
020 3640 8888

Agents Note: Whilst every care has been taken to prepare these sales particulars, they are for guidance purposes only. All measurements are approximate and are for general guidance purposes only and whilst every care has been taken to ensure their accuracy, they should not be relied upon and potential buyers are advised to recheck the measurements