

Gloucester Terrace, W2 3DA

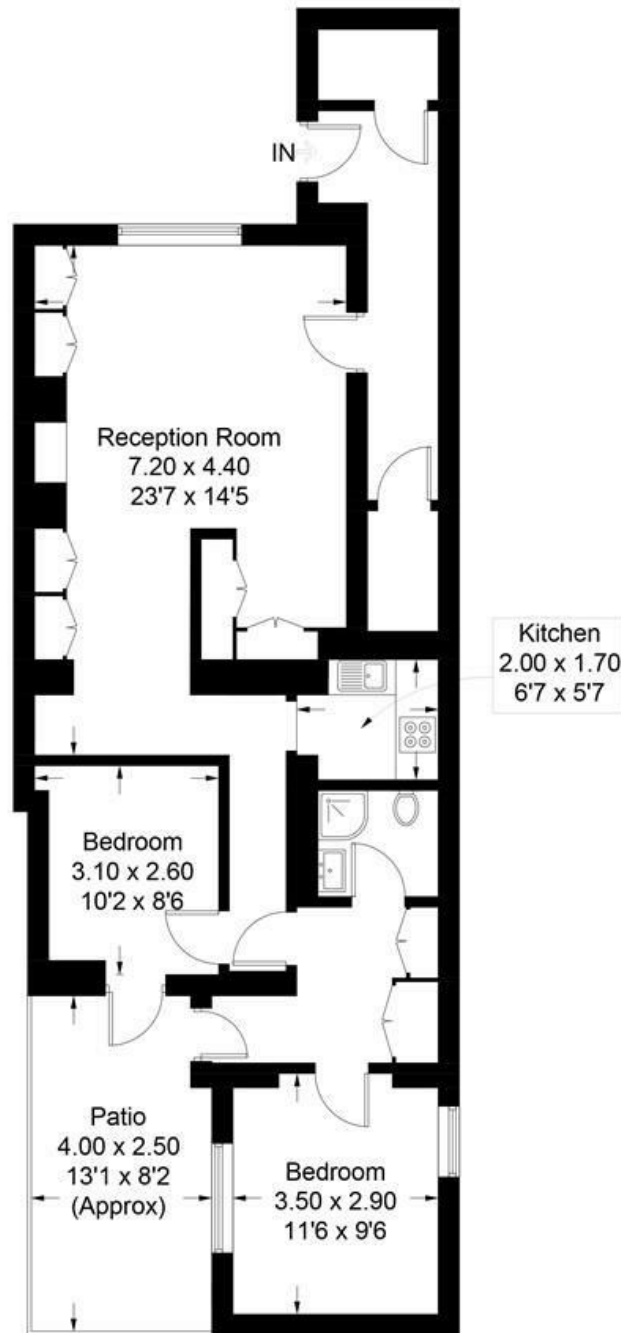
£495 Per Week



NEW INSTRUCTION! SOLE AGENT! We are delighted to offer this bright and spacious two bedroom apartment (one large double/one smaller double) set on the lower ground floor of a beautiful period conversion boasting its own private entrance. This apartment comprises a spacious light reception room, modern compact fitted kitchen, two bedrooms both with access to a private decked patio area and fully tiled bathroom with ample storage space. Located very close to Lancaster Gate Station and the open green spaces of Hyde Park. Paddington Station is also within easy reach. Book appointment today and avoid disappointment. Available end of Aug/beginning of September.

Gloucester Terrace, W2

Approximate Gross Internal Area = 77.8 sq m / 837 sq ft



Lower Ground Floor

Illustration for identification purposes only, measurements are approximate, not to scale. floorplansUsketch.com © (ID522925)

Energy Efficiency Rating

	Current	Potential
Very energy efficient - lower running costs		
(92 plus) A		
(81-91) B		
(69-80) C		
(55-68) D		
(39-54) E		
(21-38) F		
(1-20) G		
Not energy efficient - higher running costs		
England & Wales	EU Directive 2002/91/EC	

Environmental Impact (CO₂) Rating

	Current	Potential
Very environmentally friendly - lower CO ₂ emissions		
(92 plus) A		
(81-91) B		
(69-80) C		
(55-68) D		
(39-54) E		
(21-38) F		
(1-20) G		
Not environmentally friendly - higher CO ₂ emissions		
England & Wales	EU Directive 2002/91/EC	

TENURE

Leasehold: 140 years remaining
SC & GR: £2052 p.a. approx