



<https://ascendproperties.com/property/14645190>

Asking Price £215,000

Ascend
Built on higher standards

<https://ascendproperties.com/property/14645190>

This beautiful and spacious apartment resides in the ever-popular Spectrum development.

With two spacious bedrooms both opening out onto your very own private balcony, you'll get cracking views out over the perfectly landscaped communal area. You'll also benefit from a bright and stylish open-plan kitchen which has plenty of space for all your get-togethers, gatherings and shindigs.

The location is bang-on too. Step out of your front door and you're just 500 metres from a variety of boutiques and designer shops. You're also just a stone's throw from Deansgate and all its thriving bars, restaurants and clubs. In fact, wherever you feel like going in Manchester, Spectrum is at the heart of it all. You couldn't be more perfectly located.

If you're interested in having a closer look, or have any questions, do get in touch. And just so you know, the pictures for this apartment are for marketing purposes only. The internal fixtures, fittings and furnishings may vary.

S/C - £1635 per year
G/R - £303 PA
Lease - 250 years from 2006

Living/Kitchen

20'3" x 18'5" (6.19 x 5.62)

Master Bedroom

12'9" x 10'7" (3.91 x 3.25)

Bedroom two

12'9" x 8'7" (3.91 x 2.64)

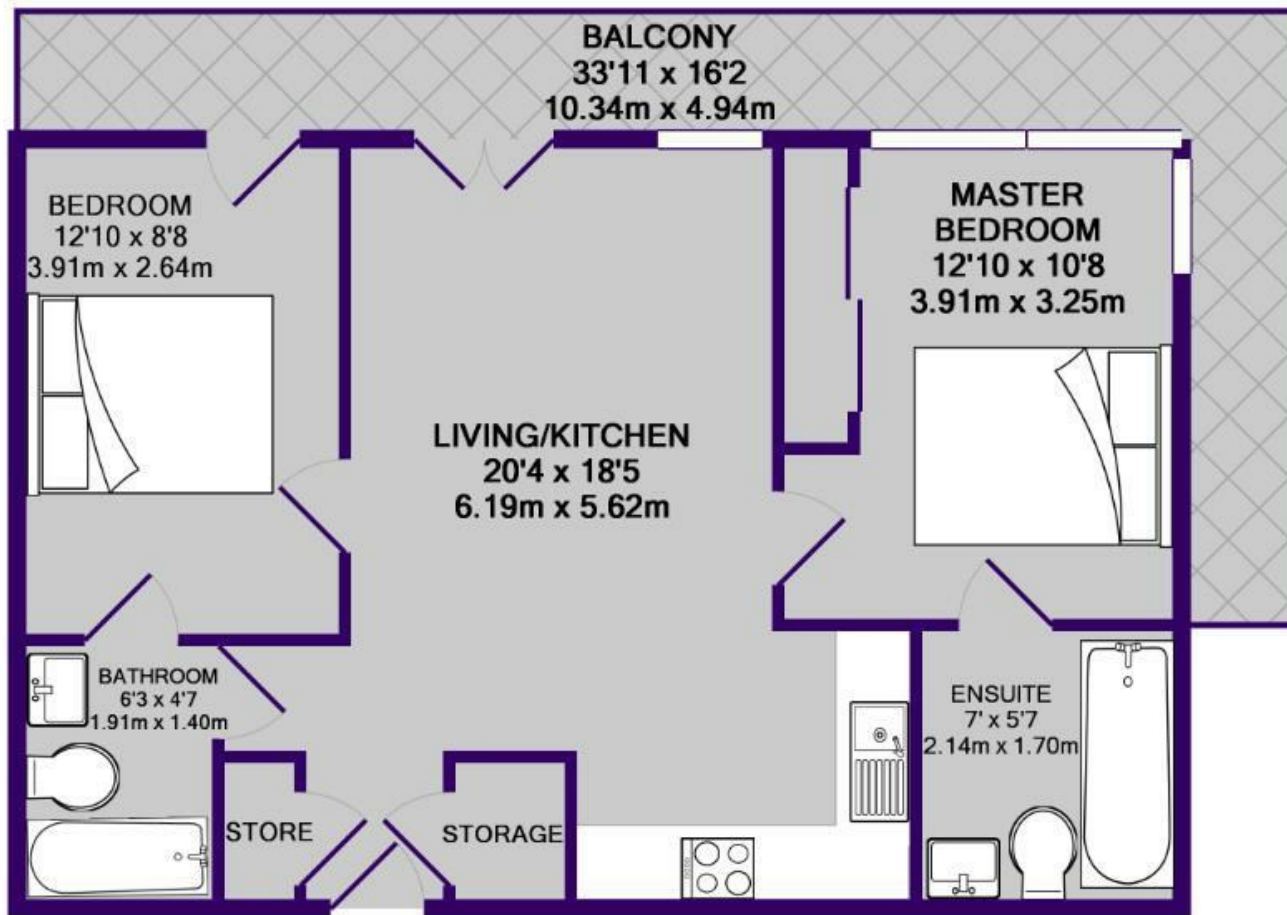
Bathroom

6'3" x 15'5" (1.91 x 4.7)

Modern three piece bathroom suite.



Please note that we have not tested any apparatus, equipment, fixtures, fittings or services, and so cannot verify they are in working order or fit for their purpose. Furthermore solicitors should confirm moveable items described in the sales particulars are, in fact, included in the sale since circumstances do change during marketing or negotiations. A final inspection prior to exchange of contracts is also recommended. Although we try to ensure accuracy, measurements used in this brochure may be approximate. Therefore if intending purchasers need accurate measurements to order carpeting or to ensure existing furniture will fit, they should take such measurements themselves.



TOTAL APPROX. FLOOR AREA 625 SQ.FT. (58.1 SQ.M.)

Whilst every attempt has been made to ensure the accuracy of the floor plan contained here, measurements of doors, windows, rooms and any other items are approximate and no responsibility is taken for any error, omission, or mis-statement. This plan is for illustrative purposes only and should be used as such by any prospective purchaser. The services, systems and appliances shown have not been tested and no guarantee as to their operability or efficiency can be given.

Made with Metropix ©2018

