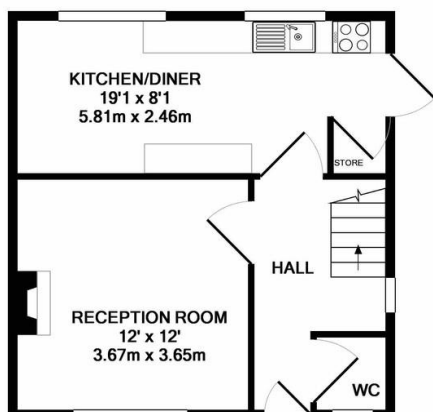




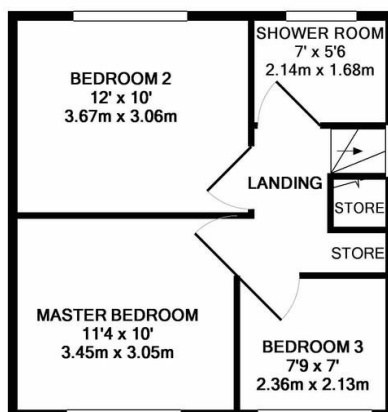


# Property Summary

A neatly presented and much improved three bedroom semi detached family home pleasantly situated on cul de sac within a highly sought after location. The accommodation comprises of main entrance hall, lounge, kitchen / diner, refitted ground floor W/C, landing to three bedrooms, refurbished shower room, landscaped gardens, off road parking. internal inspection comes highly recommended.



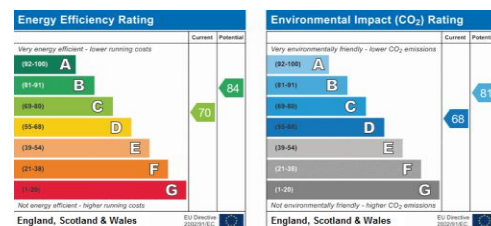
GROUND FLOOR  
APPROX. FLOOR  
AREA 382 SQ.FT.  
(35.5 SQ.M.)



1ST FLOOR  
APPROX. FLOOR  
AREA 382 SQ.FT.  
(35.5 SQ.M.)

PHILLIPS GEORGE LTD  
TOTAL APPROX. FLOOR AREA 764 SQ.FT. (71.0 SQ.M.)

Whilst every attempt has been made to ensure the accuracy of the floor plan contained here, measurements of doors, windows, rooms and any other items are approximate and no responsibility is taken for any error, omission, or mis-statement. This plan is for illustrative purposes only and should be used as such by any prospective purchaser. The services, systems and appliances shown have not been tested and no guarantee as to their operability or efficiency can be given  
Made with Metropix ©2019



- Neatly Presented
- Much Improved Throughout
- Highly Sought After Location
- Cul De Sac
- Ground Floor W.C
- Landscaped Gardens
- Refurbished Shower Room
- Off Road Parking

phillips george | sales & lettings

Agents Note: Whilst every care has been taken to prepare these sales particulars, they are for guidance purposes only. All measurements are approximate and for general guidance purposes only and whilst every care has been taken to ensure their accuracy, they should not be relied upon and potential buyers are advised to recheck the measurements

46 Long Street, Wigston, Leicestershire, LE18 2AH

info@phillipsgeorge.co.uk

0116 216 8178