



## 6 Broomgrove Road, Sheffield S10 2LR £2,250 Per Calendar Month

Available to let is this stunningly attractive 1860's period 5 double bedroom detached home. Located in this leafy conservation area within walking distance of several outstanding schools, hospitals, the award-winning Botanical Gardens and a wide range of restaurants and cafes on Ecclesall Road and Broomhill. The property in brief comprises of: entrance hallway, three generously proportioned reception rooms and large open plan dining kitchen benefitting from integrated fridge freezer, dishwasher, oven, hob, microwave, coffee maker and wine cooler. First floor: master bedroom with en-suite, guest bedroom with en-suite, two further double bedrooms and family bathroom. Second floor: double bedroom five. Basement: utility room and wine store. Outside: Private drive with electric security gate and space for numerous vehicles, to the rear there is a lovely enclosed walled Victorian garden. The property also benefits from double glazing throughout and gas central heating. UNFURNISHED 6-12 MONTH TENANCY. No Smokers, Students or Sharers. Pets Negotiable Energy Efficiency Rating D



### 6 BROOMGROVE VILLAS

APPROXIMATE GROSS INTERNAL AREA  
336.4 SQ M / 3622 SQ FT

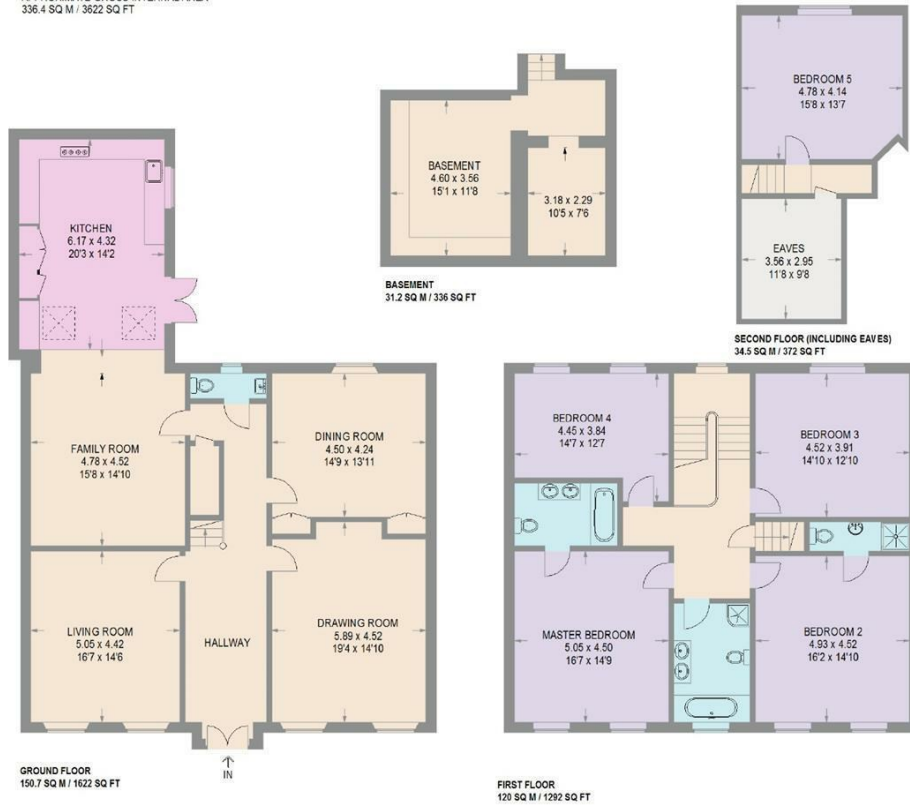
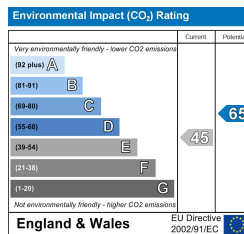
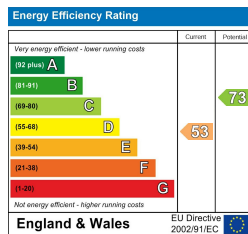


Illustration for identification purposes only.  
measurements are approximate, not to scale.



Banner Cross  
Dronfield  
Hathersage  
Bakewell  
Matlock  
[www.saxtonmee.co.uk](http://www.saxtonmee.co.uk)

949-951 Ecclesall Road, Sheffield S11 8TN  
1 Civic Centre, Dronfield S18 1PD  
3 Bank View, Main Road, Hathersage S32 1BB  
Matlock Street, Bakewell DE45 1EE  
27 Causeway Lane, Matlock, DE4 3AR

T: 0114 268 3241  
T: 01246 290992  
T: 01433 650009  
T: 01629 815307  
T: 01629 828250

E: [bannercross@saxtonmee.co.uk](mailto:bannercross@saxtonmee.co.uk)  
E: [dronfield@saxtonmee.co.uk](mailto:dronfield@saxtonmee.co.uk)  
E: [hathersage@saxtonmee.co.uk](mailto:hathersage@saxtonmee.co.uk)  
E: [bakewell@saxtonmee.co.uk](mailto:bakewell@saxtonmee.co.uk)  
E: [matlock@saxtonmee.co.uk](mailto:matlock@saxtonmee.co.uk)

While we endeavour to make our sales particulars fair, accurate and reliable, they are only a general guide to the property and, accordingly, if there is any point, which is of particular importance to you, please contact the relevant office. The Agents have not tested any apparatus, equipment, fittings or services and so cannot verify they are in working order. The buyer is advised to obtain verification. Please note all the measurement details are approximate and should not be relied upon as exact. All plans, floor plans and maps are for guidance purposes only and are not to scale. Under no circumstances should they be relied upon as exact or for use in planning carpets and other such fixtures, fittings or furnishings. YOUR HOME IS AT RISK IF YOU DO NOT KEEP UP REPAYMENTS ON A MORTGAGE OR OTHER LOAN SECURED ON IT. 'A Life Assurance policy may be requested.' 'Written Quotations of credit terms available on request.'