



WOOD & PILCHER



- Two Bedroom Apartment
- Open Plan Living Space
- Lift-serviced Building
- Walk To Town & Station
- One Allocated Parking Space
- EPC GRADE C

Cannons Wharf, Tonbridge

£250,000

woodandpilcher.co.uk



**Bridleway House, Cannons Wharf, Tonbridge,
TN9 1FJ**

Style and convenience. Luxury two bedroom apartment in the iconic Cannons Wharf development. Lift-serviced building, en-suite to master bedroom, living space opening to walk-out balcony and allocated parking space. High Street, river, castle and station nearby.

ENTRANCE HALL

Radiator, storage cupboard.

BEDROOM

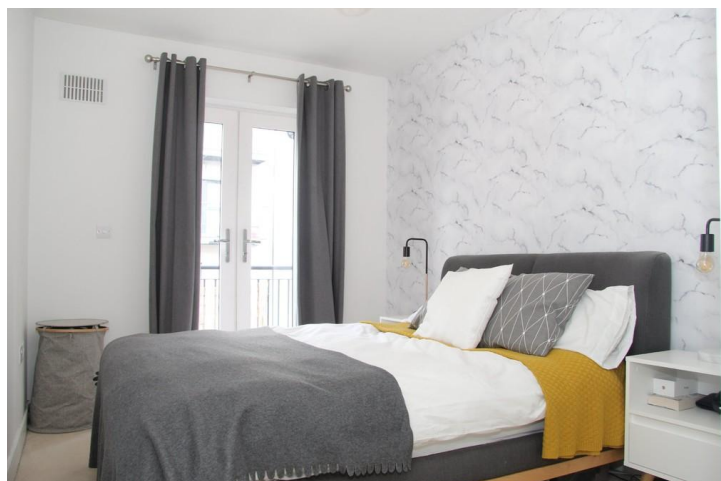
Double glazed doors to balcony, radiator, built-in wardrobes.

EN-SUITE

Heated towel rail; tiled walls; pedestal wash hand basin with mixer tap; low level W/C; shower cubicle.

BEDROOM

Double glazed window, radiator.



BATHROOM

Part tiled walls; heated towel rail; pedestal wash hand basin with mixer tap; low level W/C; panel enclosed bath with mixer tap and separate shower over; extractor fan.

LIVING ROOM

Double glazed windows and doors to Juliet balcony, double glazed door to further walk-out balcony, radiator.

KITCHEN

Range of eye and base level units incorporating bowl and a half single drainer stainless steel sink unit with mixer tap; built-in oven and hob with extractor fan over; integrated fridge freezer and washer dryer.

OUTSIDE

Walk out balcony and one allocated parking space.

SITUATION

The property is situated in the vibrant town of Tonbridge which offers an eclectic mixture of bars, restaurants, shops and of course Tonbridge train station offering fast and frequent services to central London. The town is well served regarding schooling for all ages with a wide range of primary, secondary, grammar and a number of public schools. Recreational facilities in and around Tonbridge include Haysden country park, rowing and river activities, Tonbridge indoor/outdoor swimming pools, Angel leisure centre, the annual summer carnival; plus the historic Tonbridge castle which offers many more activities and numerous popular yearly events.

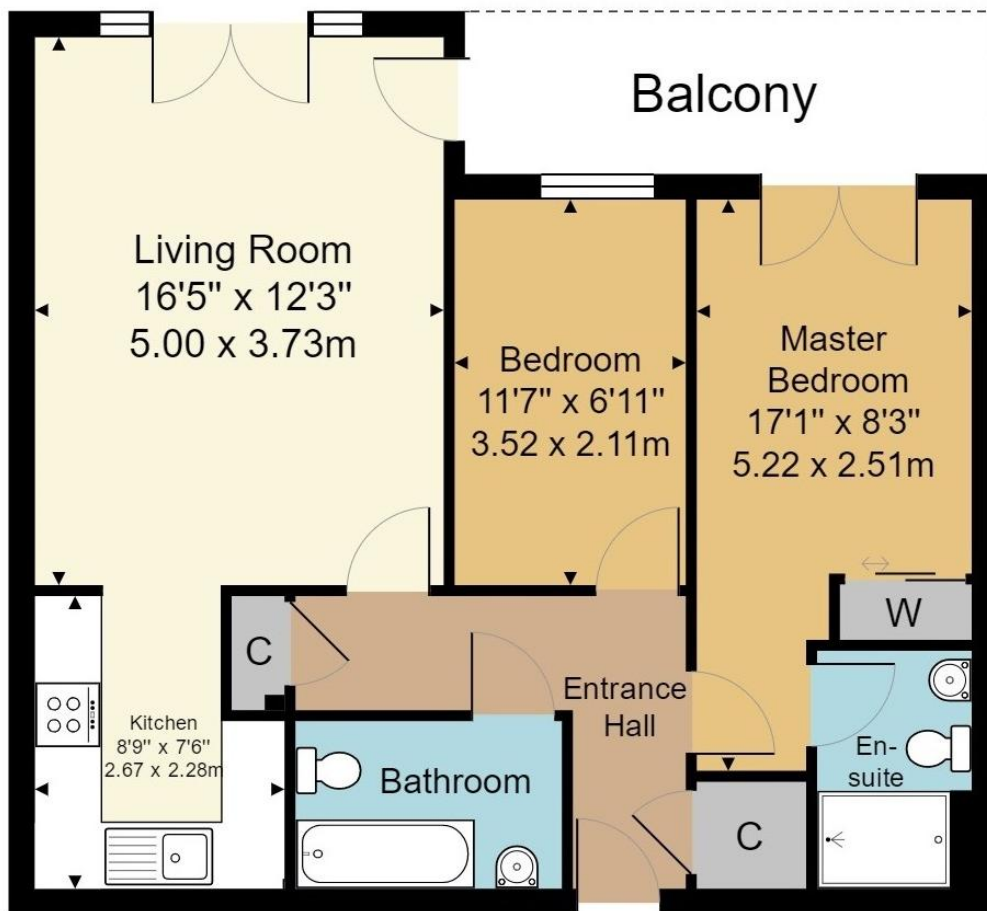
TENURE

Leasehold.

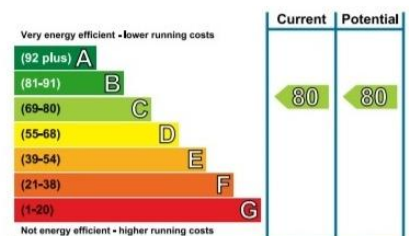
VIEWING

By appointment only with Wood & Pilcher on 01732 351135.





Approx. Gross Internal Floor Area 638 sq. ft / 59.27 sq. m



Wood & Pilcher, their clients and any joint agents give notice that: They have no authority to make or give any representations or warranties in relation to the property. Any statements on which a purchaser or Tenant wishes to rely must be checked through their Solicitors or Conveyancers. These Particulars do not form part of any offer or contract and must be independently verified. The text, photographs and floor plans are for guidance only and are not necessarily comprehensive, please also note that not everything in the photographs may be included in the sale. It should not be assumed that the property has necessary planning, Building Regulations or other consents. We have not tested any appliances, services, facilities or equipment and Purchasers or Tenants must satisfy themselves as to their adequacy and condition. We have not investigated the Title, or their existence of any Covenants or other legal matters which may affect the property.

Tonbridge 01732 351135
 Heathfield 01435 862211
 Crowborough 01892 665666
 Southborough 01892 511311
 Tunbridge Wells 01892 511211
 Letting & Management 01892 528888
 Associate London Office 02070 791568

