



SALES

LETTINGS

MANAGEMENT

chiswick@tatepartnership.co.uk

020 8996 0000

TATEPARTNERSHIP.CO.UK



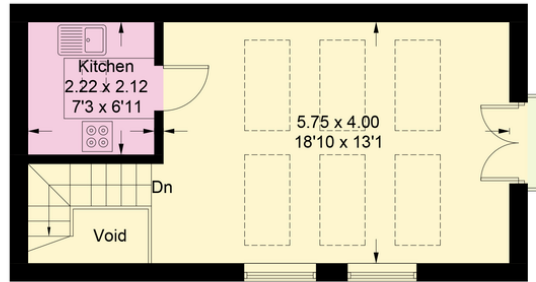
Chiswick High Road, W4

£1,950 pcm

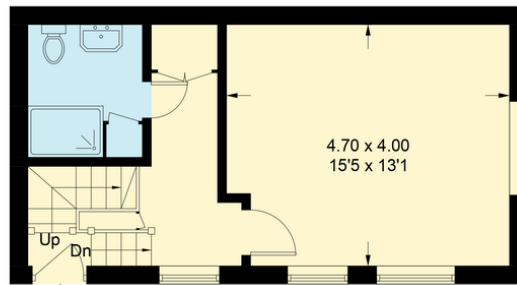
A really quite unique STUDIO HOUSE. A rare one bedroom Studio House with accommodation arranged over two floors and with its' own off street parking space. The "upside down" living has the ground floor entrance hall, leading to the double bedroom and separate shower room. Upstairs is the bright Vaulted Ceiling Studio living room with wooden flooring, Juliet Balcony and separate kitchen. In addition there is Off Street Parking for one car. This is central Chiswick, so shopping, dining and transport facilities are on your doorstep. Turnham Green station just 5 minutes walk. Available early December. Unfurnished.

Studio House, Chiswick High Road

Approximate Gross Internal Area = 64.3 sq m / 692 sq ft



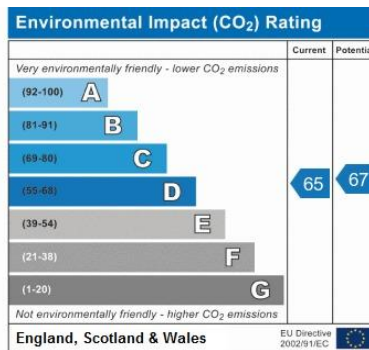
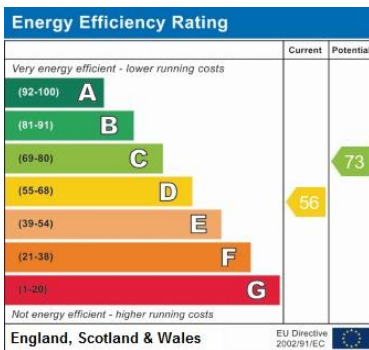
First Floor



Ground Floor

Illustration for identification purposes only, measurements are approximate, not to scale. Fourlabs.co © (ID1140564)

EPC



Address:
Chiswick High Road, W4