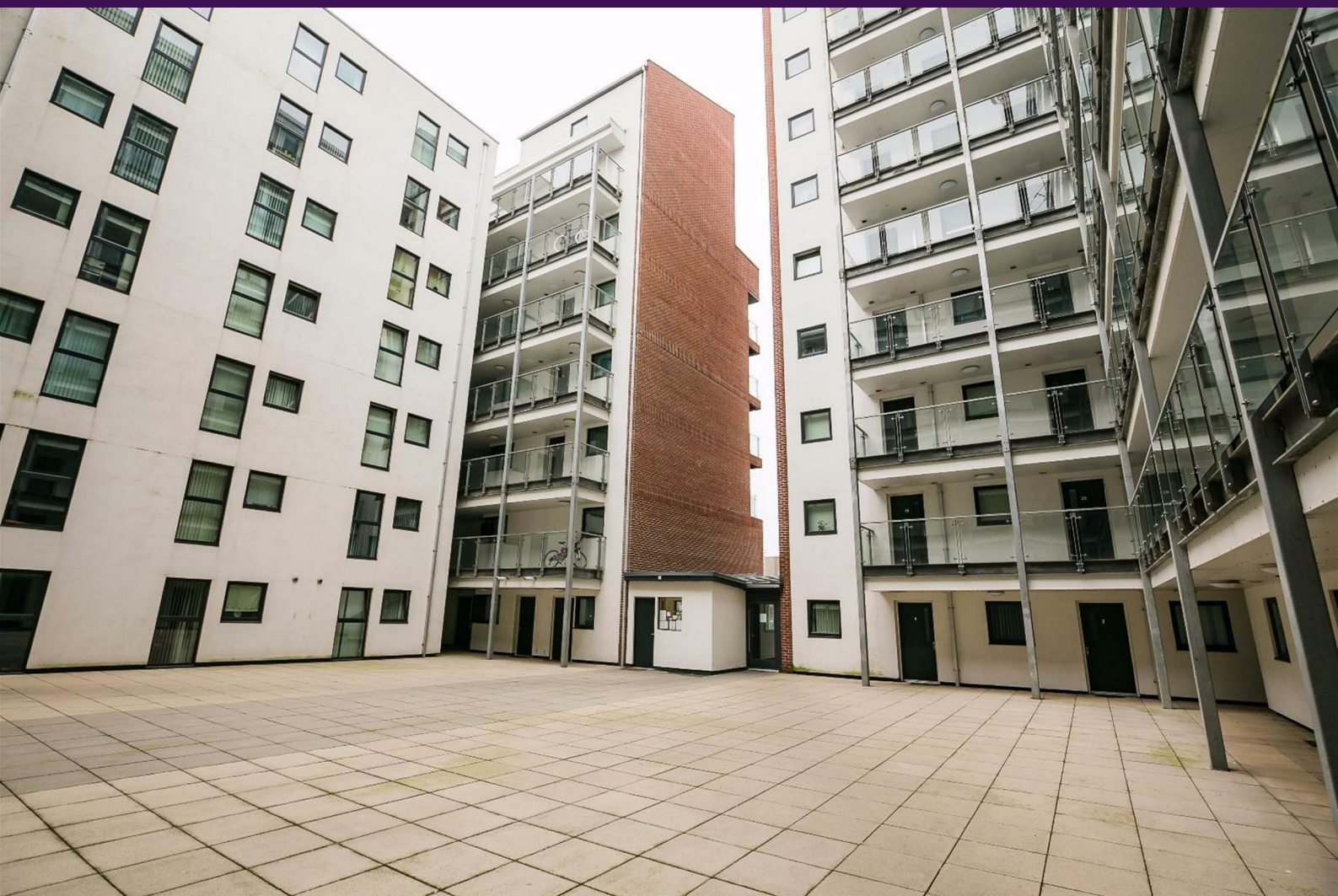


1A Old Haymarket 73-89 Victoria Street, Liverpool, L1 6AF
Tel: 0151 305 2577
Email: liverpoolsales@ascendproperties.com
www.ascendproperties.com

Ascend

Built on higher standards



32 Tabley Street, Liverpool

£725 PCM

Don't miss this amazing Liverpool apartment, with modern interiors, 2 double bedrooms and a fantastic waterfront location! Fully furnished with a sleek finish, this home is the ideal city-based pad for young professionals, city workers and graduates.

Situated in the Kings Dock Mill development, this home speaks style and convenience. Here you'll be based right in the heart of the quirky Baltic Triangle area of Liverpool, renowned for its chilled vibes, indie-start ups and alternative events. Bars, Restaurants, The Beatles Museum, Echo arena... you name it, you're just a few moments away by foot. If retail therapy is your go-to activity, you'll be delighted to know that the Liverpool ONE shopping centre is just up the road.

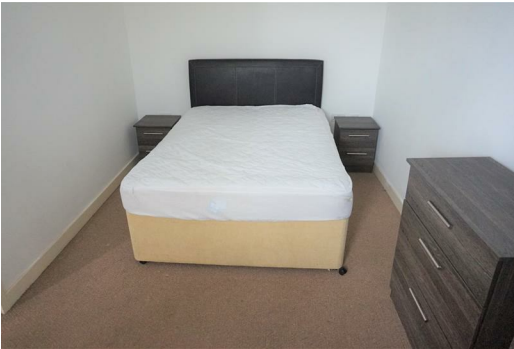
Talking transport links, this property is close to the main roads heading in to the city, ideal for driving to work. The regular buses and bus stops are within a few steps too, perfect for the commuter convenience!

The inside of the apartment boasts a spacious and modern kitchen diner with a bright, open plan layout. Complete with integrated appliances and finished with a luxe marble effect worktop, the kitchen offers plenty of space for preparation and storage. As the apartment comes furnished (to a high standard), the room features a large dining table and chairs which overlook the open plan lounge.

The bedrooms are spot on too. Both doubles, the rooms are carpeted for a cosy comfortable feel, and are finished with lush furnishings which provide plenty of storage space for all the essentials. What's more the white walls and



18 Tabley Street, Liverpool, Merseyside, L1 8DX



Energy Efficiency Rating		Environmental Impact (CO ₂) Rating	
Very energy efficient - lower running costs	Very energy inefficient - higher running costs	Very environmentally friendly - lower CO ₂ emissions	Very environmentally unfriendly - higher CO ₂ emissions
A	G	A	G
B	F	B	F
C	E	C	E
D	D	D	D
E	C	E	C
F	B	F	B
G	A	G	A

72 72