



X Building, 34 Bixteth Street, Liverpool

£875 PCM

This two bedroom apartment is smack bang in the heart of Liverpool's bustling city centre, perfectly placed for university students and those living/working in and around Liverpool.

This spacious apartment has been finished to a high standard throughout - take a step inside and you'll discover tonnes of space in the open-plan kitchen/lounge along with 2 double bedrooms and an en-suite shower room to the Master.

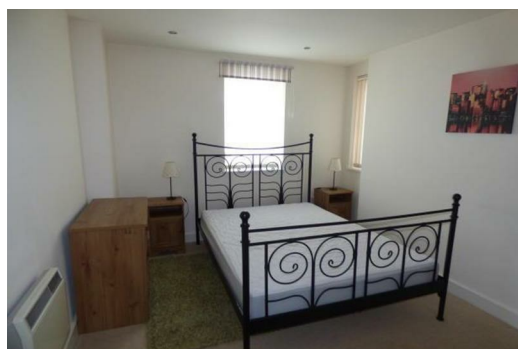
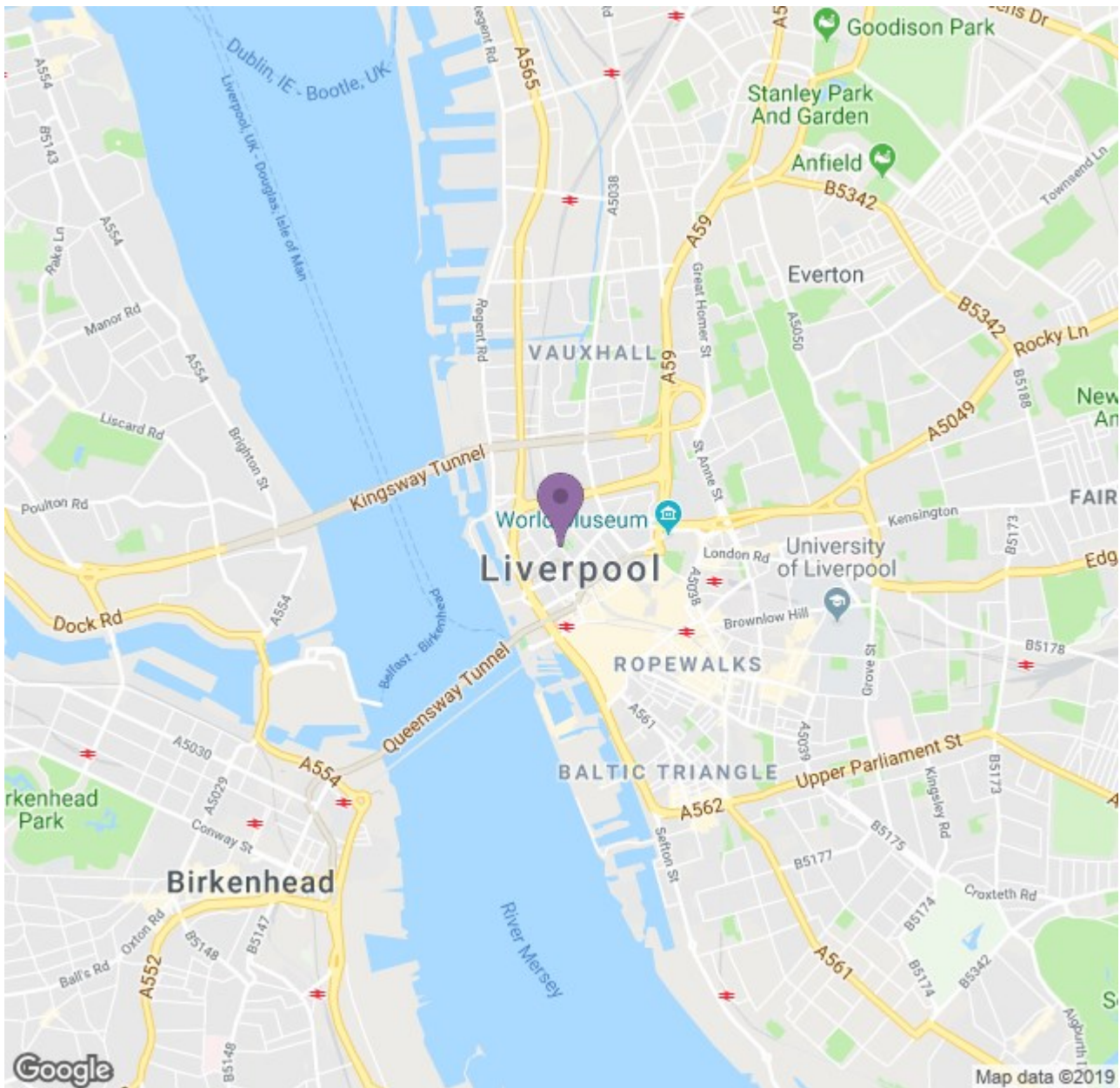
If that wasn't perfect enough, the location is equally as ideal. Just outside your front door you'll find a selection of cafes and bars on your doorstep. Venture 5 minutes further and you'll reach the city centre, where there's an endless variety of eateries, bars, shopping spots and entertainment destinations to discover. You really are right in the centre of it all - it doesn't get much better than this.

Thinking of travelling further afield? There's a handy bus stop just around the corner and the Moorfields train station is a stone's throw away. The whole of Liverpool is practically at your fingertips.

If you're interested in having a closer look, or have any questions, please do get in touch.

Available 29th September 2019





Energy Efficiency Rating		Environmental Impact (CO ₂) Rating	
Rating	Score	Rating	Score
A	92-100	A	1-10
B	81-91	B	11-20
C	69-80	C	21-30
D	55-68	D	31-40
E	45-54	E	41-50
F	35-44	F	51-60
G	21-34	G	61-70