



**TOWN & COUNTRY**

11 Marlowe Avenue, Connahs Quay, CH5 4HS

£180,000

---

# Marlowe Avenue

## Deeside

---

DON'T MISS OUT ON THIS LOVELY REFURBISHED HOME - LOOK AT PHOTOS!

Situated in a VERY DESIRABLE CUL-DE-SAC LOCATION off WEPRE PARK, an EXTENDED and VERY WELL PRESENTED three bedroom house which has undergone an EXTENSIVE REFURBISHMENT PROGRAMME in recent times including a FABULOUS KITCHEN/FAMILY AREA with INTEGRATED OVEN, HOB AND MICROWAVE, INTEGRATED DISHWASHER and CONCEALED WASHING MACHINE. In addition, it boasts a LUXURY BATHROOM with HIGH QUALITY WALL TILES, a SHOWER BATH and INSET SPOTLIGHTING.

The house has been REPLASTERED THROUGHOUT and has NEW CARPETS AND FLOORING THROUGHOUT as well as NEW SKIRTING BOARDS AND DOORS. It benefits from GAS CENTRAL HEATING with a COMBI BOILER and PVCu DOUBLE GLAZING.

Outside, there's GENEROUS OFF STREET PARKING to the front. A DRIVEWAY runs alongside the house to a LARGER THAN AVERAGE DETACHED GARAGE. To the rear, there are TWO SEATING AREAS overlooking a LAWNED GARDEN.

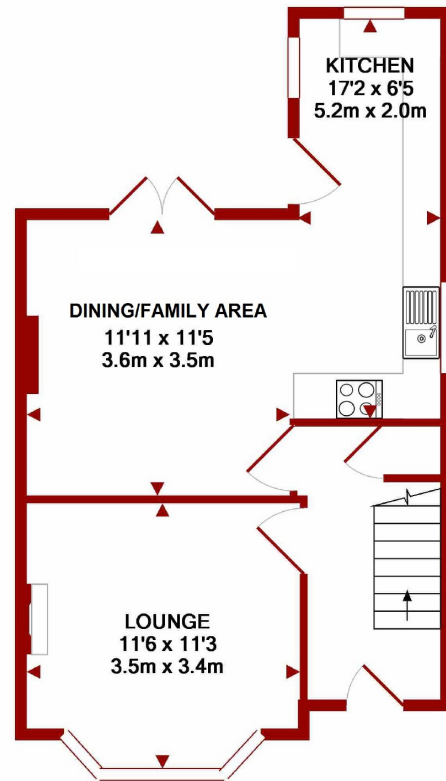
VIEWING HIGHLY RECOMMENDED.

- 
- Semi Detached House
  - Three Bedrooms
  - Refurbished
  - Fabulous Kitchen
  - Luxury Bathroom
  - Gas CH With Combi
- 

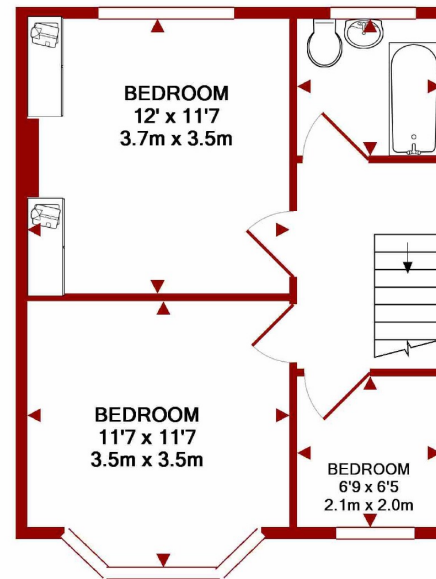








GROUND FLOOR  
APPROX. FLOOR  
AREA 444 SQ.FT.  
(41.2 SQ.M.)



1ST FLOOR  
APPROX. FLOOR  
AREA 397 SQ.FT.  
(36.8 SQ.M.)

TOTAL APPROX. FLOOR AREA 840 SQ.FT. (78.0 SQ.M.)

Floor Plan created by planstosell.co.uk - Measurements are approximate. Not to scale.  
Illustrative purposes only.  
Made with Metropix ©2019



**TOWN & COUNTRY**

**TandCDeeside**

**townandcountrydeeside**

01244 830000  
homes@tandcdeeside.co.uk  
22 Chester Road West, Deeside, CH5 1BX  
[www.townandcountryproperty.co.uk](http://www.townandcountryproperty.co.uk)

These particulars were prepared following initial inspection of the property and the descriptive comments are based upon information supplied by the owner to Town & Country Property Services at the time. These particulars, whilst believed to be accurate, are set out as a general outline for guidance only and do not constitute any part of an offer or contract. Intending purchasers should not rely upon them as statements or representation of fact, but must satisfy themselves, by inspection or otherwise, as to their accuracy. Neither Town & Country nor any person in their employ has the authority to make or give any representation or warranty whatsoever in relation to the property and these particulars are not to be construed as containing any representation of fact upon which any person is entitled to rely. None of the appliances or fixtures mentioned in these particulars have been tested by Town & Country Property Services. All measurements provided are approximate and cannot be relied upon. Floor plans if provided, are not to scale, are for guidance only and cannot be relied upon.