





**56 Plymouth Street, Town  
Centre, Swindon, SN1 2LB**

- AVAILABLE NOW
- Mid Terrace House
- Three Bedrooms
- 25ft Lounge/Diner
- Kitchen (white goods optional)
- Upstairs Bathroom
- Low Maintenance Rear Garden
- No Pets
- Gas Central Heating
- Excellent Location

**£795 PCM**

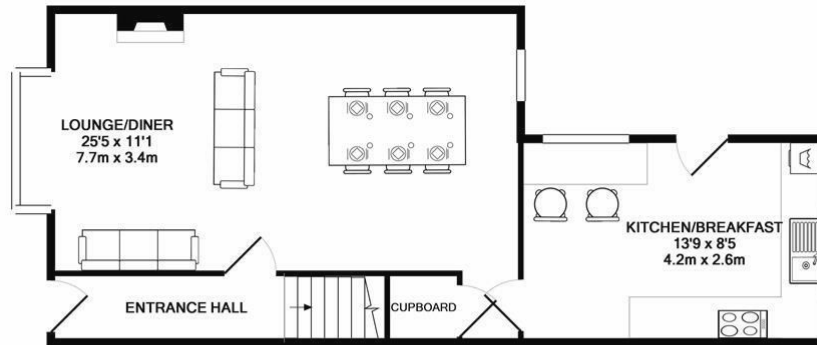


**\*\*AVAILABLE NOW\*\*** We are delighted to offer this newly decorated three bedroom mid terrace house located in Plymouth Street, within walking distance to the town centre and railway station. The accommodation comprises of lounge/diner, kitchen, three bedrooms and bathroom. Property also benefits from an enclosed rear garden, gas central heating and uPVC double glazing. Viewing is highly recommended.

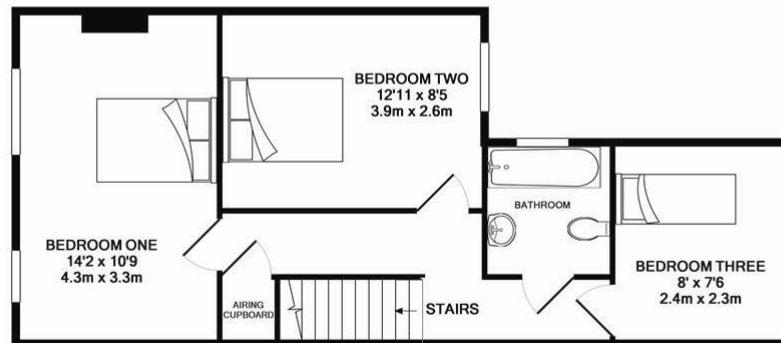


# PRIMARY HOMES & LETTINGS

Tel: 01793 641 641



GROUND FLOOR



1ST FLOOR

FOR ILLUSTRATION ONLY  
TOTAL APPROX. FLOOR AREA 915 SQ.FT. (85.0 SQ.M.)

Whilst every attempt has been made to ensure the accuracy of the floor plan contained here, measurements of doors, windows, rooms and any other items are approximate and no responsibility is taken for any error, omission, or mis-statement. This plan is for illustrative purposes only and should be used as such by any prospective purchaser. The services, systems and appliances shown have not been tested and no guarantee as to their operability or efficiency can be given.  
Made with Metropix ©2019

