

Stroud Green Road, N4 3FB

Offers In Excess Of £500,000
Leasehold



Stroud Green N4

Offers In Excess Of £500,000

Leasehold

Offered chain free a fourth floor two bedroom contemporary apartment on the doorstep of Finsbury Park station.

Internally the flat has been extremely well maintained by the present owners. Features include a stylish open plan kitchen / reception space with wooden flooring and a fully fitted white high gloss kitchen. This space further benefits from sliding patio doors allowing direct access to a private balcony overlooking the hustle and bustle of Stroud Green Road. At the rear where it's most quiet there are two large double bedrooms and a spacious bathroom suite. The master bedroom has the advantage of a walk in wardrobe with bespoke shelving, this space could potentially be an en-suite shower if preferred.

Built six years ago, a great deal of thought has been given to practical storage, light and space. There's also a secure ground floor communal bike storage area and the rear walkway overlooks a well-tended courtyard garden.

- Offered on a chain free basis
- Arranged over the fourth floor
- Light stylish and spacious
- Two large double bedrooms
- Private balcony / great views
- Easy access to Victoria & Piccadilly lines
- Great selection of bars, restaurants
- 688 SQ FT 63.9 SQ M

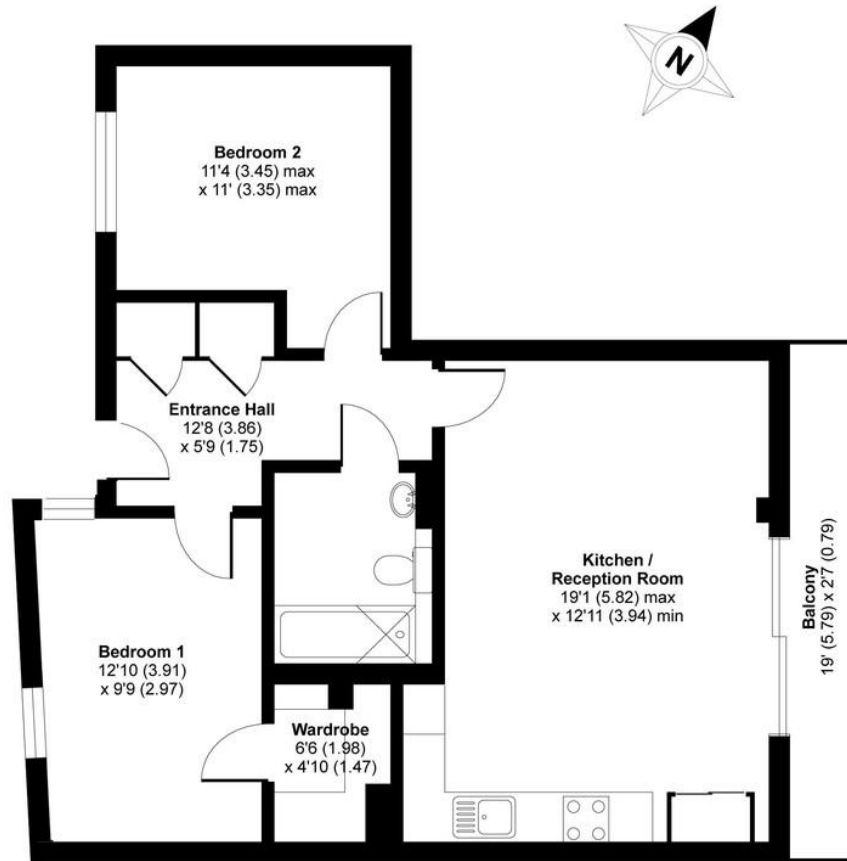




Stroud Green Road, London, N4

APPROX. GROSS INTERNAL FLOOR AREA 671 SQ FT 62.3 SQ METRES

**DAVID
ANDREW** | your
most
valuable
asset



FOURTH FLOOR

Archway Office

671 Holloway Road
London, N19 5SE

T (0)20 7619 3750

Highbury Office

90 Highbury Park
London N5 2XE

T (0)20 7354 9111

Stroud Green Office

167 Stroud Green Road
London N4 3PZ

T (0)20 7281 2000

General Contact

E info@davidandrew.co.uk

W www.davidandrew.co.uk



Agent's Note:

Whilst Care has been exercised in the preparation of these sales particulars, statements about the property must not be relied upon as representations of statements or fact. Prospective purchasers must make and rely upon their own enquiries and those of professional representatives. The company accept not liability for any error contained in these particulars.



Whilst every attempt has been made to ensure the accuracy of the floor plan contained here, measurements of doors, windows and rooms are approximate and no responsibility is taken for any error, omission or misstatement. These plans are for representation purposes only as defined by RICS Code of Measuring Practice and should be used as such by any prospective purchaser. Specifically no guarantee is given on the total square footage of the property if quoted on this plan. Any figure given is for initial guidance only and should not be relied on as a basis of valuation.

Copyright nichecom.co.uk 2017 Produced for David Andrew REF : 199823