



149 Upper Richmond Road, Putney, London, SW15 2TX

t: 0208 788 8822

e: [putney@allanfuller.co.uk](mailto:putney@allanfuller.co.uk)

[www.allanfuller.co.uk](http://www.allanfuller.co.uk)

## West Hill London, SW15

A LUXURIOUS and large home spanning nearly 1000sqft in a magnificent Victorian Mansion that is in a listed building of architectural interest. Boasting a bright and contemporary feel throughout, this beautiful home comprises two large double bedrooms, a larger than average living room as well as a family bathroom. With a private utility room housing a washer and a dryer associated away from the domestic space, meaning less noise and disturbance from daily living. Aside from the stunning living lifestyle on offer, there is also a private residents Gym and Library. Tenants will also benefit from access to a secure bike storage outbuilding for the use of residence only, as well as allocated private off-street parking. Available beginning October; EPC: C.

Besides the fantastic transport on offer, Putney has a vibrant and buzzing lifestyle with the Thames on your doorstep and some of the most popular bars and restaurants in South West London. The local area is renowned for its easy transport links to and from the city; 18 minutes from Putney Station to London Waterloo and 29 minutes from East Putney Tube Station to Oxford Circus.

Please note travel times are taken from the TfL website.



£1,900 PCM



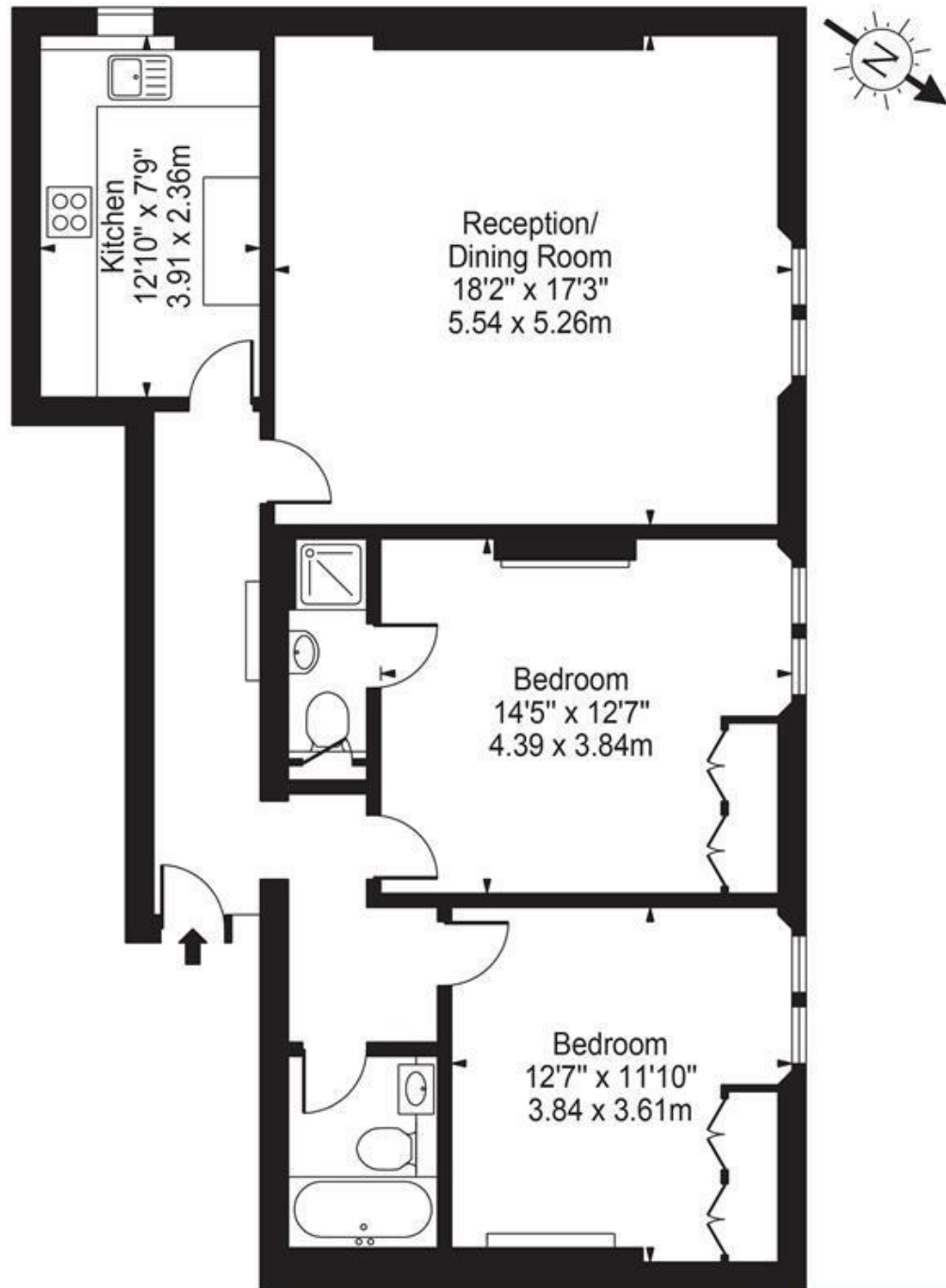






# Forest Lodge, SW15

Approx. Gross Internal Area 946 Sq Ft - 87.89 Sq M



Second Floor

ALLAN FULLER  
EST. 1983

For Illustration Purposes Only - Not To Scale Floor Plan by Mira Nikolova Photography

This floor plan should be used as a general outline for guidance only and does not constitute in whole or in part an offer or contract. Any intending purchaser or lessee should satisfy themselves by inspection, searches, enquiries and full survey as to the correctness of each statement. Any areas, measurements or distances quoted are approximate and should not be used to value a property or be the basis of any sale or let.

With regards to any information supplied by us in relation to lease, ground rent and service charge it is essential that you have this information checked by your solicitor. We have transmitted information supplied to us by the vendor of the property but we have not been able to inspect the lease to check its accuracy. Please note that we have not tested any of the equipment or utilities at this property, nothing in these particulars shall be deemed a statement that the property is in good condition or otherwise nor that any of the services or facilities are in good working order. Measurements are approximate they were taken with a sonic tape, are as accurate as possible and usually measured from the widest point of any room. Description provided herein represents the opinion of the author, is given in good faith but should not be constructed as statements of fact. The particulars and photograph are for guidance only.