



Heathfield Terrace, London, W4 4JE

£875,000

WHITMAN & CO.

SALES · LETTINGS · COMMERCIAL

- Two Double Bedrooms
- Private Garden
- Luxury Bathroom
- Oak Flooring
- Long Lease
- Split Level
- Allocated Parking Space
- High Specification Throughout
- Bike Store

Tenure - Leasehold (996 years)
 Ground Rent - £500 pa
 Service Charge - £1000 pa
 Local Authority - Hounslow
 Council Tax - Band E

THE PROPERTY

A beautifully presented split level two bedroom garden flat, with one allocated parking space, in a prestigious Georgian building enviably located directly opposite Turnham Green. Featuring two double bedrooms, a luxury bathroom, under floor heating, a bespoke fully integrated kitchen/breakfast room, reception room, garden room and a private landscaped garden. Chiswick High Road's shops, cafes and restaurants are moments away. Transport links include Turnham Green and Chiswick Park Stations, as well as various local bus routes.

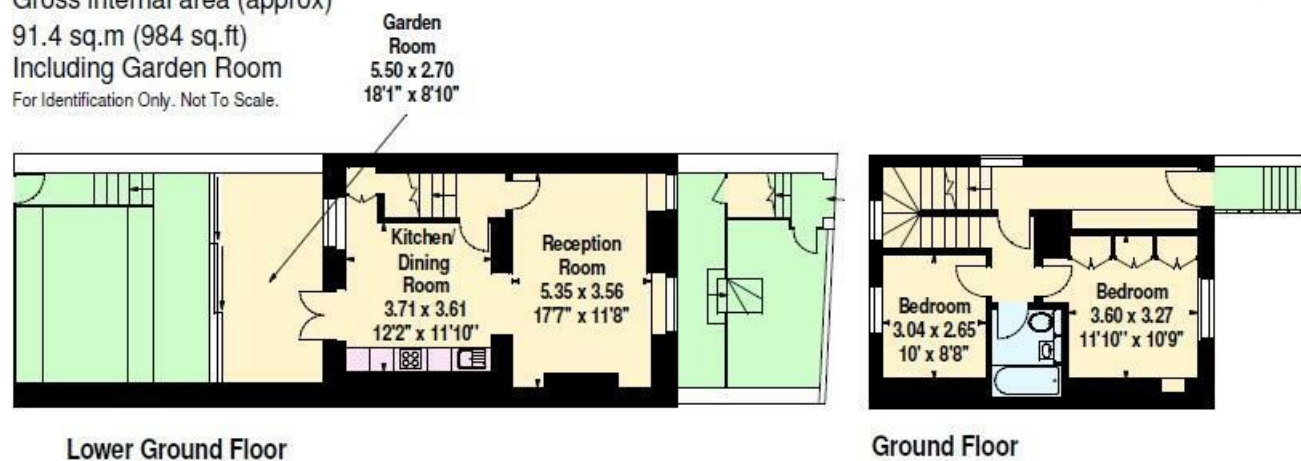
Heathfield Terrace, W4

Gross internal area (approx)

91.4 sq.m (984 sq.ft)

Including Garden Room

For Identification Only. Not To Scale.



Measurements taken from architect's plans

SITUATION



5-7 Turnham Green Terrace, Chiswick, London, W4 1RG

Tel 020 8747 8800

E-mail sales@whitmanandco.com

Website www.whitmanandco.com