

**TO LET**



**Clay Close, Dilton Marsh**

**2 Bedrooms, 1 Bathroom, Semi-Detached House**

**£900 pcm**



  
**MARTIN&CO**



## Clay Close, Dilton Marsh

Semi-Detached House,  
2 bedroom, 1 bathroom

£900 pcm

Date available: 12th July  
2024

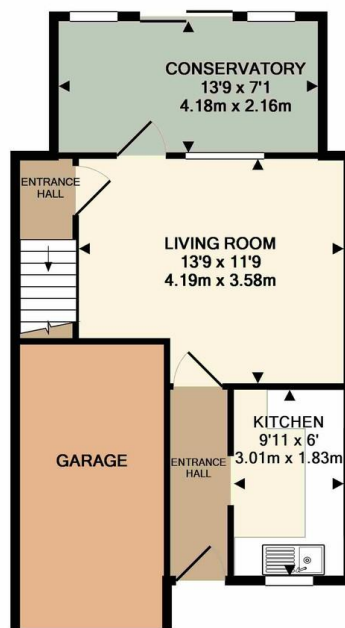
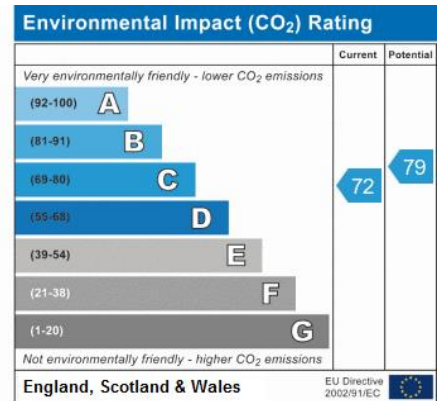
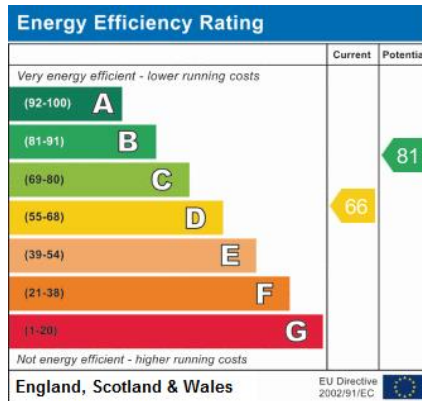
Deposit: £1,035

Holding Deposit: £200

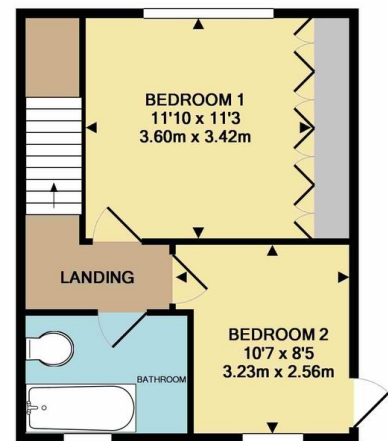
Unfurnished

Council Tax band: B

- Two bedroom village property
- Cul-de-sac location
- Gas central heating and double glazing
- Living room and fitted kitchen
- Conservatory
- Family bathroom with shower over bath
- Driveway parking and garage



GROUND FLOOR  
APPROX. FLOOR  
AREA 484 SQ.FT.  
(45.0 SQ.M.)



1ST FLOOR  
APPROX. FLOOR  
AREA 367 SQ.FT.  
(34.1 SQ.M.)

TOTAL APPROX. FLOOR AREA 852 SQ.FT. (79.1 SQ.M.)

Whilst every attempt has been made to ensure the accuracy of the floor plan contained here, measurements of doors, windows, rooms and any other items are approximate and no responsibility is taken for any error, omission, or mis-statement. This plan is for illustrative purposes only and should be used as such by any prospective purchaser. The services, systems and appliances shown have not been tested and no guarantee as to their operability or efficiency can be given  
Made with Metropix ©2019

A lovely semi-detached home, situated in a popular cul-de-sac in a village location. The house benefits from gas central heating and double glazing, conservatory, driveway and garage.

## Martin & Co Westbury

7 Palomino Place • Westbury • Wiltshire • BA13 3SD  
T: 01373 866686 • E: westbury@martinco.com

01373 866686  
<http://www.martinco.com>



**Accuracy:** References to the Tenure of a Property are based on information supplied by the Seller. The Agent has not had sight of the title documents. A Buyer is advised to obtain verification from their Solicitor. Items shown in photographs including but not limited to carpets, fixtures and fittings are not included unless specifically mentioned within the sales particulars. They may however be available by separate negotiation. Buyers must check the availability of any property and make an appointment to view before embarking on any journey to see a property. No person in the employment of the agent has any authority to make any representation about the property, and accordingly any information given is entirely without responsibility on the part of the agents, sellers(s) or lessors(s). Any property particulars are not an offer or contract, nor form part of one. **Sonic / Laser Tape:** Measurements taken using a sonic / laser tape measure may be subject to a small margin of error. **All Measurements:** All Measurements are Approximate. **Services Not tested:** The Agent has not tested any apparatus, equipment, fixtures and fittings or services and so cannot verify that they are in working order or fit for the purpose. A Buyer is advised to obtain verification from their Solicitor or Surveyor.