



## Westcombe Park Road, Greenwich

£4,134 pcm

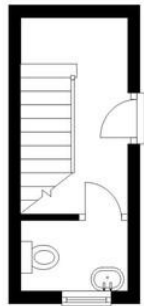
\*\*\*Viewings starting the 10th of July, 2021\*\*\* A fabulous six bedroom Victorian house with a large rear garden and three bathrooms (one en-suite) recently refurbished inside to a high spec contemporary standard with all modern appliances. Ground floor cloakroom. 1st floor 3 double bedrooms, bathroom and open plan kitchen/reception area. 2nd floor 2 double bedrooms of which one is en-suite, a single bedroom/study and a guest bathroom. Situated on leafy Westcombe Park Road in the Vanbrugh Conservation Area.

- Available from 10th of July, 2021
- Recently refurbished
- Fabulous six bedrooms
- Large rear garden
- En-suite Bedroom



### Ground Floor

Approx. 7.5 sq. metres (81.2 sq. feet)



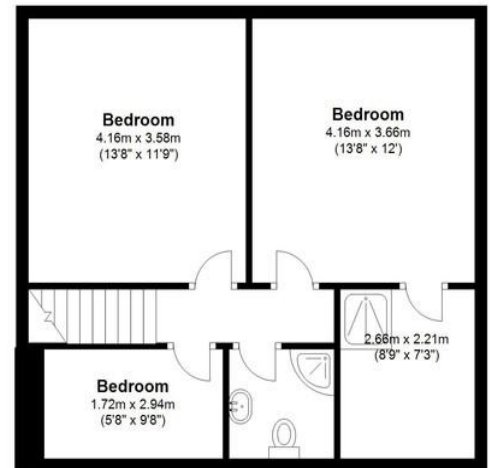
### First Floor

Approx. 84.3 sq. metres (907.7 sq. feet)



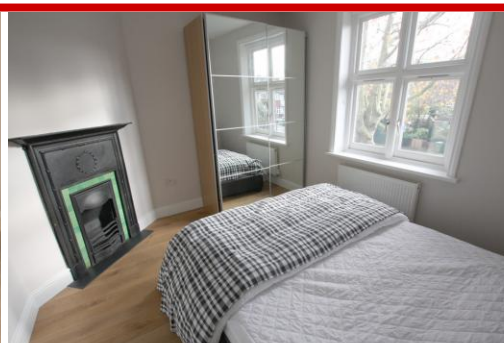
### Second Floor

Approx. 50.3 sq. metres (540.9 sq. feet)

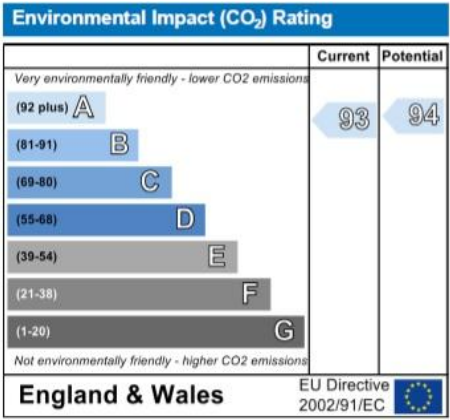
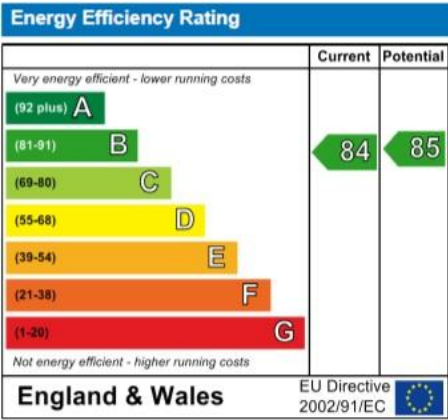


### WESTCOMBE PARK ROAD

Total area: approx. 142.1 sq. metres (1529.8 sq. feet)







655 Commercial Road, London, E14 7LW

**Disclaimer**  
River Habitat, their clients and any joint agents give notice that: 1. They have no authority to make or give any representations or warranties in relation to the property. These particulars do not form any part of an offer or contract and must not be relied upon as statements or representations of fact. 2. Any areas, measurements or distances are approximate. The text, photographs and plans are for guidance only and are not necessarily a complete representation of the property. Photographs are taken using a wide angle lens camera. 3. It should not be assumed that the property has all necessary planning, building regulations or other consents and River Habitat have not tested any services, equipment or other facilities. Purchasers must satisfy themselves by inspection or otherwise